

Zinc-plated cable trays with zinc coating





Overview

Cut, bend, and connect the wire mesh trays to route cable and hose in configurations such as curves, slopes, and tees. They are a lightweight option for organizing bundles of cable and hose while keeping them. The galvanization process is the primary anti-corrosion treatment for cable trays. The following provides a comprehensive explanation, covering standards, ranges, testing, and special application. Our market-leading cable tray system is now available in ZM (Zinc Magnesium), as well as existing finishes (pre-galvanized, hot-dip galvanized, powder coated and stainless steel). Hot Dipped Galvanized - for outdoor use to BS EN 1461-1999, between 60 and 80 microns thick Electrolytic Polishing - for stainless steel use Bends, Risers, T Junctions, Crosses & Reducers can be made from wire mesh cable.



Zinc-plated cable trays with zinc coating



SWM150/50EG , Ramdev Steel Industries

Electro zinc plated wiremesh cable trays are constructed from steel wires that are electroplated with a layer of zinc. This zinc coating enhanced corrosion resistance, making electro zinc plated wiremesh

Cable and Hose Trays , McMaster-Carr

The zinc plating on these tray systems offers good corrosion resistance. Cut, bend, and connect the wire mesh trays to route cable and hose in configurations such as curves, slopes, and tees.



Cablofil PA4 Electro-Zinc Steel Wire Cable Tray 105mm Radius Support

Radius support connector for wire cable trays. Forms secure horizontal hinged joints for 100 to 600 mm tray widths. Electro-zinc plated steel delivers corrosion resistance and durable performance in cable

Cablofil EZT90EZ Electro-Zinc Steel Wire Cable Tray 90° Angle Support

90° angle support connector for wire cable trays. Forms secure horizontal hinged joints for 50 to 600 mm tray widths. Electro-zinc plated steel provides corrosion resistance and durable performance.



CABLE TRAYS

There is a solution for each type of environment. This white paper compares the High Resistance (HR) and Hot-Dip Galvanising (HDG) solutions and highlights the new High Resistance range, ZnAl

CABLE TRAYS

Zinc rich coating is a common process used for this type of part, and requires only a temperature of 280°C (536°F) or less, either by centrifuging or spraying. The thickness of the coating (coated Zinc



Hi-Wire(TM) Galvanized Cable Tray

Made of electro zinc-plated galvanized steel to help prevent corrosion from chemicals or humidity. Open design suspends electrical and network cables from support



Zinc Magnesium - a better finish for cable tray and trunking

Cost-effective: reduced zinc usage, combined with elimination of any requirement for post-galvanising treatment, means that Zinc Magnesium coating is an extremely



Cablofil SASDC Hot Dip Glavanised Cable Tray Suspension Hanger

Overview Cablofil SASDC suspension hanger provides ceiling mounting for cable tray systems, enabling fast, screwless fixing directly to compatible Cablofil trays. It supports M8 threaded suspension and

Zinc Plated Grid Cable Duct Zinc-Coated Grid Cable Tray

There are galvanized, hot-dipped zinc, steel, stainless steel, aluminum, glass fiber reinforced plastic and other materials for customers to choose from, but also



Cable Tray, Cable Bus, Wire Mesh Cable Trays , MP

MP Husky manufacturers Cable Tray Systems, Cable Bus System, Wire Mesh/Wire,Cable Tray, & Cable Management Systems. Our cable support



Cablofil CE40 Zinc Magnesium Cable Tray Hold Down Clamp Plate

Cablofil CE40 hold down clamp plate provides secure retention of cable trays within cable support systems, ensuring stable fixing to wire mesh tray geometry. Two clamp plates are used per



Wiremesh Tray Finishes

Both zinc plating and mill galvanizing are a type of zinc coating or finish on cable tray for indoor applications. Both processes are used to attach sacrificial zinc to the steel surface to control red rust

100mm Cable Basket Tray - 3 Metre , Wire Mesh, Zinc Finish

100mm Cable Basket Tray - 3 Metre , Electro Zinc Plated Steel This 100mm cable basket tray offers a strong, lightweight solution for routing and supporting cables in internal containment systems. It



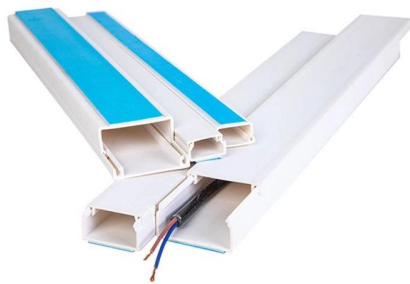
Cablofil PA2 Electro-Zinc Steel Wire Cable Tray 54mm Radius Support

Radius support connector for wire cable trays. Forms secure horizontal hinged joints for 100 to 600 mm tray widths. Electro-zinc plated steel delivers corrosion resistance and durable performance in cable



L-com Electro Zinc Plated Wire Mesh Cable Tray, 11.82

The Electro Zinc Plated finish protects these cable trays from weather and chemical corrosion, making them suitable for use in almost any industrial or commercial



ZM FINISH ADDED TO CABLE TRAY RANGE - Unitrunk

Unitrunk's ZM cable tray range is manufactured in accordance with BS EN 10346. The ZM cable tray range is available to order now via your local Unitrunk

Galvanized Cable Tray Zinc Coating Standards and

The galvanization process is the primary anti-corrosion treatment for cable trays. The quality of the zinc coating directly determines the tray's service



WBT WBT2X24 ZP , Cable Tray, Zinc-Plated Steel, 2 x 24 in.,

The nvent caddy wbt performance cable round wire tray is a continuous pathway solution to support high-performance cabling systems while providing an ideal foundation for datacom and electrical





Basket Tray

It is especially designed for the handling of data cables and provides a fast installation solution for the contractor. This zinc plated basket tray is ideal for internal applications, if you are working externally



Hot Dip Galvanizing

Ferrules in Pakistan, Earthing W clamp, Aluminum plate, Single core non magnetic cable clamp, Insulators bushing, Cad weld Mold, Cantilever Support, Insulation tape, #Cable Cleat, Electrical

Cablofil Wire Mesh Cable Tray, 36 lb Capacity, Barbados , Ubuy

Shop Cablofil Wire Mesh Cable Tray, 36 lb Capacity, Steel, Zinc Plated CF54/200EZ online at a best price in Barbados. 416027781



Cablofil CE25CE30 Zinc Magnesium Clamp Plate Kit

Overview Cablofil CE25CE30 clamp plate kit provides a complete solution for forming secure junctions between wire mesh cable trays within cable support systems. Supplied as an all-in-one kit, it enables



LANDE CABLE TRAY 36U, 300mm, zinc plated

Cut to suit a range of rack heights, these steel, 'U'-shaped, cable trays, available in two widths and three finishes, fix to the front-to-back cross members in a rack.

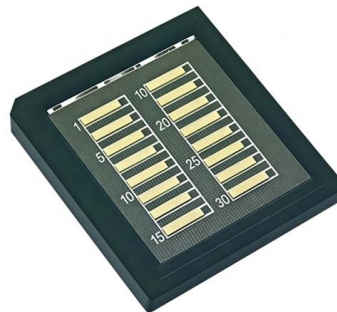


Galvanized Cable Tray Zinc Coating Standards and

The quality of the zinc coating directly determines the tray's service life and application scenarios. The following provides a comprehensive explanation,

Tonga White Zinc Plated Cable Trays jobs in United States

Today's top Tonga White Zinc Plated Cable Trays jobs in United States. Leverage your professional network, and get hired. New Tonga White Zinc Plated Cable Trays jobs added daily.



WBT WBT6X24 ZP , Wire Mesh Cable Tray, Zinc-Plated Steel, 6

WBT WBT6X24 ZP , Wire Mesh Cable Tray, Zinc-Plated Steel, 6 in. H x 24 in. W x 118 in. L Part Number: 9997418 Write a Review Add to Wish List





Contact Us

For datasheets, pricing, or custom high-speed optical interconnect solutions,
please visit:

<https://www.syropy.com.pl>