

# **Working Principle of Installing Network Chassis and Rack**





## Working Principle of Installing Network Chassis and Rack

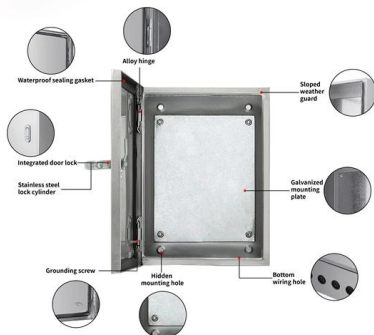


### Installing the Chassis

Installation Options with Rack-Mount Kits The rack-mount kit enables you to install the switch into racks of varying depths. You can position the switch with easy access to either the port connections or the

### Installing the switch into a 2-post rack

Holding the chassis level, insert three screws (12-24 or 10-32, depending on the rack type) into each of the two rack-mount brackets (using a total of six screws) and into the cage nuts or threaded holes in



### Installing a rack-based server

Installing the cable-management arm The cable-management arm is used to efficiently route cables so that you have proper access to the rear of the system. Use the procedure to install

### How to Rack a Server: Essential Tips and Step-by-Step

Rack a server like a pro! Our step-by-step guide covers server rack setup, hardware installation, and cable management tips. Safely mounting your



### Installing the Switch Chassis

The switch chassis is automatically grounded when you properly install the switch in a grounded rack with metal-to-metal connections between the switch and rack.



### Cisco Nexus 9408 ACI-Mode Switch Hardware

Safety Network Equipment-Building System (NEBS) Statements Preparing to Install the Chassis Unpacking and Inspecting the Chassis Installing



### Network Rack Installation 101 - VCELINK

In this guide, we'll see the tools you'll need, the best and proven practices for server rack setup and network rack setup, and the detailed steps





## How to Setup a Server Rack: Tips and Tricks {Step-by

This article outlines the steps to setup a server rack and offers the tips and tricks for securely building the rack.



## How to Correctly Wire a Network Rack? - VCELINK

Discover how to wire a network rack with step-by-step instructions, expert tips, and best practices.

## Chassis Installation , Celestica's Documentation Portal

Gathering the following tools before starting the chassis installation is recommended. There are several considerations to keep in mind when installing a rail kit in a server rack. Following



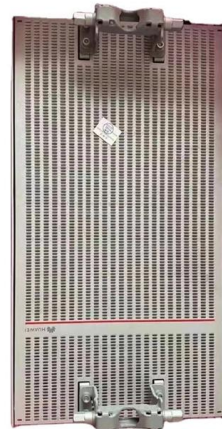
## rack\_install.fm

Rack-Mounting Guidelines Standard Open Rack Requirements In addition to the requirements listed in the "General Requirements for Racks" section on page A-1, if you are mounting the chassis in an



## Step 2: Installing the Chassis in a Rack

Installing the Chassis in a Rack Put the Chassis in front of the rack, in the center of the rack. Lift and slide the Chassis onto the rack shelf. Make sure that the holes



## How to Properly Install and Organize Fiber Networking Equipment in a

Learn how to properly install and organize fiber networking equipment in an 18-slot rack mount enclosure. This beginner-friendly, engineering-focused guide covers chassis installation,

## Comprehensive Guide to Installing Components in a

Proper installation of components in a data center server rack is a complex but crucial process. While it may add to initial data center construction costs,



## Installing the Chassis

The switch chassis that you are installing ships with two adjustable bottom-support rails that you can attach to a four-post rack to hold the chassis. Each of these



## Network Rack Installation 101: Basics You Need to Know

Read the article to know the basics of network rack installation, from choosing the right rack type to cable management and maintenance tips.



## New Home Network Rack and APs Installation

Today's video is the final video in a 3 part series where I cover how to plan, implement and install a new home network. If you are building a home, make sure you check out this entire series to

## Rack Mounting and Enclosure Options: A

Whether you're setting up a new network or reorganizing an existing one, mounting racks and enclosures effectively is crucial for maintaining a clean, efficient, and



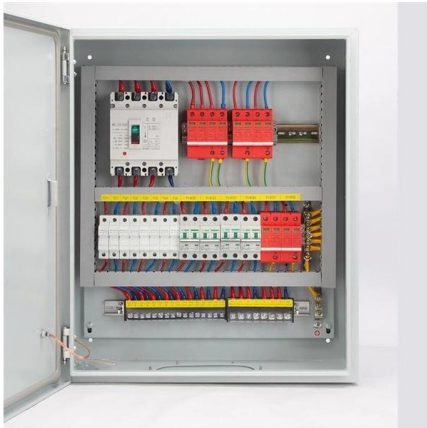
## How To Wire a Server and Network Rack , Tips & Best

Racks separated into "server only" and "network only" are usually seen in large business and data center environments. Small/medium business



## Network+ Basics: Physical Installation

Each rack can also have lockable doors on the front and back. These doors prevent people who aren't authorized from accessing the equipment.



### Network & Server Rack Setup Best Practices

Learn network & server rack setup best practices. Get tips for how to setup a server or network rack, how to layout your equipment, & enhance your

### Setting Up a Server Rack - Server Rack Installation

If you want to learn more about the correct way of equipment installation, you'll find a network rack installation guide in this article. Server Rack



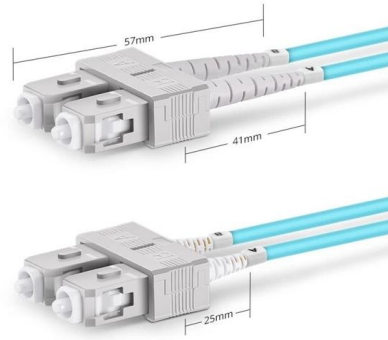
### Tips for installing rack chassis like a pro

Learn how to install chassis in a rack with order, good ventilation, and clean cabling. A practical and detailed guide for professional assembly.



### Installing a Chassis

Installing a Rack or Cabinet Before you install the switch, you must install a standard four-post, 19-inch (48.3-cm) EIA data center rack (or a cabinet that contains such a rack) that meets the requirements



Duplex SC UPC



### Chapter: Installing the Switch Chassis

Safety Installation Options with Racks and Cabinets Airflow Considerations Installation Guidelines Unpacking and Installing the Switch Installing the Switch Grounding the Chassis Starting

### A Beginners' Guide to Server Rack and Cabinet

A server rack or network cabinet is designed to accommodate different technical devices, including routers, network switches, hubs, Ethernet cables, patch



### Network Rack Installation Guide

Learn how proper network rack installation improves cable management, airflow, security, and long-term network reliability for business infrastructure.



## 25 Steps For Installing New Server Racks

Nearly every business needs at least one server rack to house networking equipment, and some businesses might need several. However, unless you or someone on your team has data



## Contact Us

---

For datasheets, pricing, or custom high-speed optical interconnect solutions, please visit:  
<https://www.syropy.com.pl>