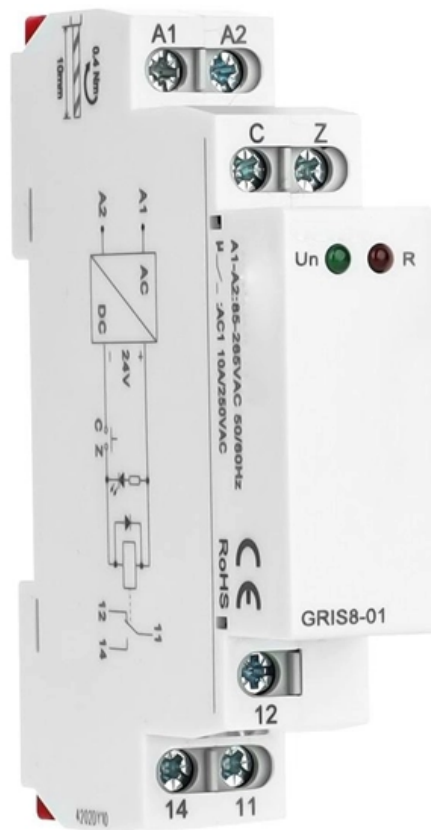


Wiring the distribution box in rainy weather





Overview

Choose a waterproof electrical box with a high IP rating, like IP66 or IP67, for reliable protection against heavy rain and humidity. , IP65 for dust-tight + water jets; IP67 if temporary immersion is possible), select a box with enough. Compared with the ordinary distribution box, the outdoor wind and snow distribution box requires more careful maintenance, so how do you need to work?

When overhauling the distribution. Wiring systems should be designed and installed so that they minimize the amount of condensed moisture or rain water that they carry into the electrical equipment enclosures.



Wiring the distribution box in rainy weather



on video **How to Wire a Home Distribution Box**

How to Wire a Home Distribution Box - Step-by-Step , Distribution DB box wiring diagram
Welcome to our channel! In this video, we'll walk you through the

how to install a waterproof electrical box

2. Check the box: Before installation, the electrical distribution box should be fully inspected to ensure that the box is not damaged or rusted, the



NEC Rules for Outdoor Wiring

Outdoor wiring faces harsher conditions than indoor installations as it is exposed to moisture, sunlight, and mechanical damage. Below is a comprehensive guide to NEC rules for

How to maintain the distribution box in rainy and snowy weather

Compared with the ordinary distribution box, the outdoor wind and snow distribution box requires more careful maintenance, so how do you need to work? When overhauling the distribution box, check the



Pre-Terminated Patch Panel

- Multi-application support
- Flexible configuration
- Modular design



Multi-functional Sliding Patch Box, Modular



Modular Sliding Patch Box



Sliding Patch Box, Modular



Tips for Maintaining Outdoor Power Boxes in Severe Weather

Protect your outdoor power distribution box from severe weather with tips on cleaning, sealing, and securing it to prevent damage and ensure safety.

How To Make Outdoor Distribution Boxes Weather-resistant?

Traditional wiring methods often suffer from insulation aging or poor contact under these pressures. Achieving excellent weather resistance requires careful consideration of the housing



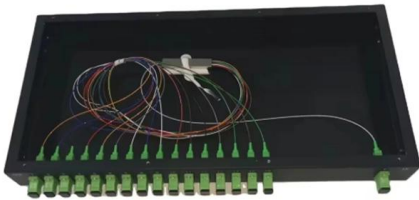
How to prevent condensation in electrical enclosures

Learn how to keep electrical enclosures warm and dry to prevent condensation, protect devices, and ensure long-lasting electrical safety.

How to Wire a Home Distribution Box



Welcome to our channel! In this video, we'll walk you through the process of wiring a home distribution box with a detailed connection diagram. Whether you're an electrician or a DIY enthusiast

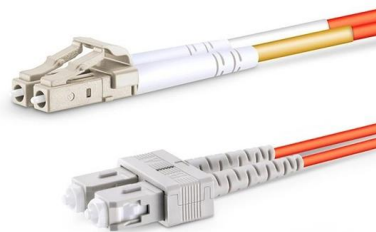


Temporary Power Safety: Distribution Boxes + Industrial

Learn how construction power, temporary electrical boxes, and IP67 connectors combine with E-abel distribution panels and Weipu industrial

A Step-by-Step Guide to Wiring an Electrical Panel Box

Find out how to properly wire an electrical panel box with a comprehensive diagram and step-by-step instructions.



Understanding Distribution Boxes: A Comprehensive Guide

Classified by Installation Environment Indoor Distribution Box Indoor distribution boxes are used in protected environments such as homes, offices,



Wiley Online Library , Scientific research articles, journals, books

Hier sollte eine Beschreibung angezeigt werden, diese Seite lässt dies jedoch nicht zu.



A Beginner's Guide to Using a Weatherproof Junction Box

Use sealants around openings to stop moisture and dust from getting in. Check your distribution box often. Look for damage, rust, and make sure all seals are good to stop problems.



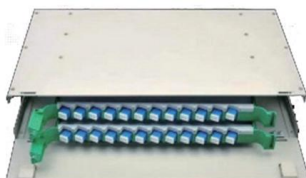
The Complete Guide to Distribution Box: Installation, Types & More

What's the difference between a distribution box and a sub-panel? A distribution box typically refers to the main electrical panel that receives power from the utility service. A sub-panel is



How to confirm whether the installation location of the

The electrical distribution box plays a vital role in the power system. It is responsible for distributing electricity to various circuits and equipment.





How to keep a waterproof electrical box dry in heavy rain

Choose a waterproof electrical box with a high IP rating, like IP66 or IP67, for reliable protection against heavy rain and humidity. Regularly inspect seals, gaskets, and

LoRawan outdoor base station

- * Industrial Internet gateway
- * Compatible with LoRaWAN network,
- * ClassA/B/C mode
- * Support 8/16 channel
- * Supports PoE power
- * supply and backup battery power supply
- * 10KV lightning protection



Electrical Weather Head Wiring Diagram and Installation

Learn how to wire an electrical weather head with this detailed diagram. Understand components, wiring setup, and installation for safe and proper connections.

Weatherproof Outdoor Distribution Boxes: Key Design Insights

These boxes play a critical role in ensuring the safety and efficiency of electrical wiring systems exposed to adverse weather conditions. Equipped with circuit breakers, they mitigate risks associated with



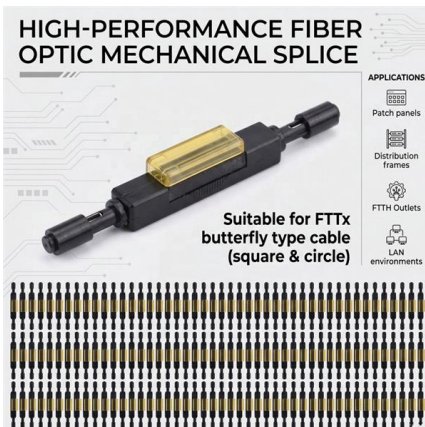
Size determination, installation method and wiring mode

The distribution box is the central hub of the home circuit and the general control of our daily power consumption. It is an indispensable electrical equipment. If there



Raining? Check For This! Fixing Water Issue In My Electrical Panel

On Amazon: *EATON SURGE PROTECTOR: <https://amzn.to/3ogFb2l> *INTERMATIC SURGE PROTECTOR: <https://amzn.to/37DVYq6> *DI-ELECTRIC GREASE: <https://amzn.to/37wE0Wh>

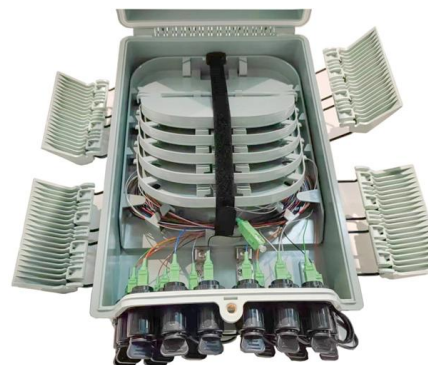


Moisture Problems in Electrical Systems , Cable Tray Institute

Cable tray wiring systems are more desirable than conduit wiring systems where moisture is a problem. Conduit wiring systems require careful attention to many details to prevent the moisture in the

How To Keep Your Outdoor Electrical Box Waterproof

Outdoor Electrical Box Outdoor electrical boxes are vital components of your home's electrical system, housing crucial connections that power your



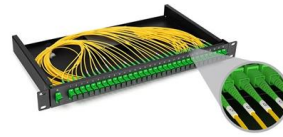
Low voltage distribution box: weatherability standard and protection

Low voltage distribution box outdoor use requires IP65 or NEMA 4X ratings, corrosion-resistant materials, and proper sealing for lasting weather protection.



Electric distribution box wiring tutorial (very simple and practical)

In this video, we are going to wire a power distribution box. This small box has an rccb switch that protects the outputs from electric shock and also has a miniature switch that protects the



Contact Us

For datasheets, pricing, or custom high-speed optical interconnect solutions, please visit:
<https://www.syropy.com.pl>