

# **Wiring of the three-level distribution box during construction should be kept away from**





## Overview

---

The principle of minimizing distribution distances means that the distances between distribution boards and switch boxes should be kept as short as possible. (3) Power distribution from tertiary switch boxes to electrical equipment must follow the "one machine, one switch" principle, with no branching allowed. Choose the right box based on environment (indoor/outdoor), load capacity, and durability. Ensure safe placement: install in dry, accessible areas with good ventilation and at appropriate height (typically ~1. This fact sheet explains how to apply the requirements shown in AS/NZS 3012:2019 Electrical installations - construction and demolition sites (AS/NZS 3012:2019), which is called up as a mandatory standard by section 163 of the Work Health and Safety Regulation 2025 (WHS Regulation).



## Wiring of the three-level distribution box during construction should

---

### Three Phase Electrical Wiring Installation in a Multi



In today electrical wiring installation tutorial, we will show how to wire a Three Phase Consumer Unit Installation in a multi-storey building from Utility Pole to a 3-Phase

### Low-voltage distribution networks

In European countries the standard 3-phase 4-wire distribution voltage level is 230/400 V. Many countries are currently converting their LV systems to the latest IEC standard of 230/400 V nominal



### Distribution Box Wiring Steps

?Marking and Inspection? ?Power Supply Marking?: The AC, DC or different voltage levels of the power supply in the distribution box should be

### Essential Rules for 3-Level Electrical Distribution

The main distribution board should be located near the power source. Distribution boards should be placed in areas where electrical equipment or loads are

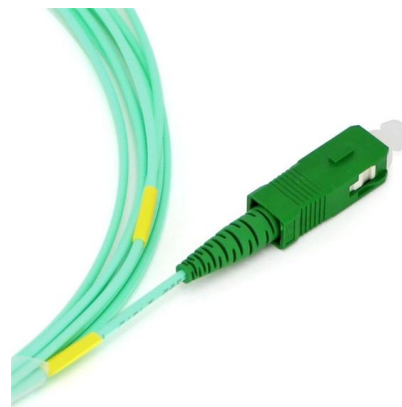


### Precautions in the construction of distribution boxes

(2) The installation position of each distribution box and switch box of the construction power distribution system should be reasonable. The total distribution box should be as close as possible to the

### The installation requirements for the distribution box

Introduction  
Understanding The Components of A Distribution Box  
Selecting The Right Distribution Box  
Site Preparation and Location Requirements  
Electrical Connections and Wiring  
Compliance with Standards and Regulations  
Conclusion  
Proper installation of a distribution box isn't just a technical requirement. It's a vital step in ensuring the safety and efficiency of your entire electrical system. Following best practices reduces the risk of electrical fires, power outages, and other hazards, protecting your property and keeping everyone safe. If you're looking for a reliable, See more on eabel Published: Feb 7, 2025  
SafeWork NSW

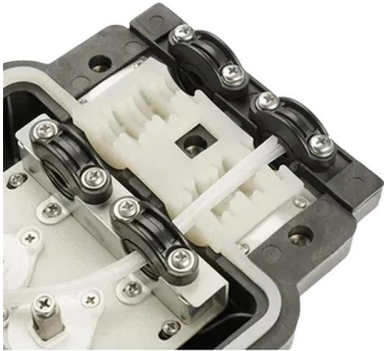


### Electrical practices -- construction and demolition sites

Live permanent wiring shall be readily



distinguishable from construction wiring. NOTE: Particular care should be taken with permanent wiring located in ceiling



### **The Meaning and Function of Primary, Secondary, and Tertiary**

Differences Between Primary, Secondary, and Tertiary Distribution Boxes  
Primary Distribution Box: Designed specifically for construction sites, conforming to relevant electrical codes.

### **Electrical practices -- construction and demolition sites**

All construction wiring (both on construction and demolition sites), switchboards and transportable structures must be inspected and tested in accordance with



### **1910.304**

Cord connections Table S-4. - Maximum Cord- and Plug-Connected Load to Receptacle

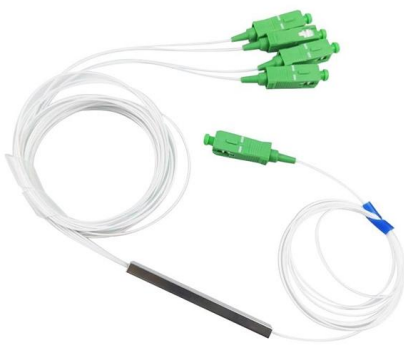
### **How to Install a Cable Distribution Box Safely and**

Cable distribution box can be customized according to special application requirements, such as in high temperature, high humidity, corrosive or



### Step-by-Step Guide to Wiring a 3 Phase DB Box

Learn about the wiring process for a 3 phase distribution board (DB) box, including the necessary steps and safety precautions. Understand how to connect the



### Detailed introduction of safety requirements for distribution box

2. The main distribution box shall be close to the power supply. The distribution box shall be installed in the area where the electric equipment is relatively concentrated. 3. The power



### Distribution boards components

Note: to facilitate future modifications to the installation, it is recommended to keep all relevant documents (photos, diagrams, characteristics, etc.) in a suitable location close to the





### What is Level 1, Level 2 and Level 3 distribution box

Three level protection refers to: on-site construction of electricity must be done in the general distribution box, distribution box and switch box to install leakage protection.



### The difference between the first, second, and third levels of

As for the equipment inside, there are certain differences: the first level distribution cabinet generally has isolation switches, circuit breakers, leakage protectors, etc., the second level



### Safety requirements of distribution box

The main distribution box shall be close to the power supply. The distribution box shall be installed in the area where the electric equipment is relatively concentrated.



### How to Wire 3-Phase, 400V Distribution Board? IEC

Wiring a 3-Phase, 400V Distribution Board: UK & EU - IEC. How to Wire a Three-Phase Distribution Board for 400V Load Circuits and MCB's?





### The purpose, working principle, and usage instructions

The distribution box should be installed as much as possible in the central area where the electrical equipment or load is relatively concentrated, to

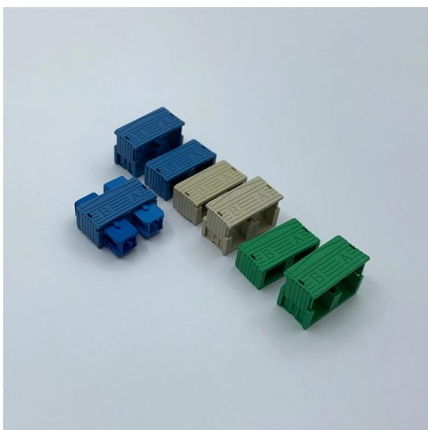
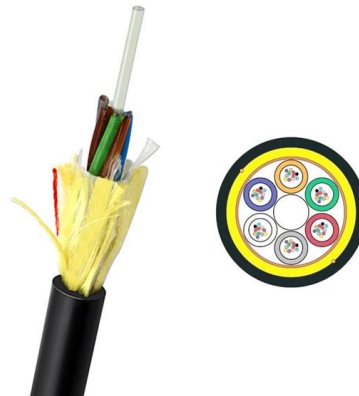


### Electrical safety in the construction industry

Electrical hazards on construction sites can put workers at risk of injury or death. Learn how to control electrical risks on construction sites, fulfil your legal obligations and keep yourself and

### The installation requirements for the distribution box

Learn how to install a distribution box safely and correctly. Covers wiring, placement, standards, and expert tips for a compliant setup.



### Three Phase Electrical Wiring Installation in Home

How to Wire 3-Phase Electrical Distribution Board & Consumer Unit in Home In our today electrical wiring installation tutorial, we will show how to wire and install a



## On Distribution Box And Its Connection

In addition, according to the safety code, when the conductor is led down from the pole into the distribution box, it shall be protected by passing through the pipe and led in from the bottom of the box.



### The difference between the first, second, and third levels of

Third level distribution box: refers to the final junction box of each electrical appliance, which can be movable and fixed. Remember that the leakage protection switch is the last one, and

## Contact Us

---

For datasheets, pricing, or custom high-speed optical interconnect solutions, please visit:  
<https://www.syropy.com.pl>