

Wiring of the Garden Lighting Distribution Box





Overview

In this landscape lighting wiring guide, we will provide you with step-by-step instructions on how to install the wiring for your outdoor lights. We will cover everything from choosing the appropriate wire size to connecting the lights and installing the necessary transformers. Insights into the exciting subject of lighting design, lighting technology, electrical engineering and light control. Whether you want to highlight your favorite plants, illuminate walkways, or add a touch of elegance to your patio, proper wiring is essential to ensure your lights function correctly. When planning the arrangement of fixtures, place them at intervals that allow light to cover desired areas.



Wiring of the Garden Lighting Distribution Box



The Complete Guide to Landscape Lighting Wiring: A Step-by-Step

In this landscape lighting wiring guide, we will provide you with step-by-step instructions on how to install the wiring for your outdoor lights. We will cover everything from choosing the appropriate wire size to

Cabling for garden project (colour coded diagram included)

This will run directly from the main fuse board and I'll control them with a Wi-Fi enabled light switch on the wall inside the garage, allowing me to

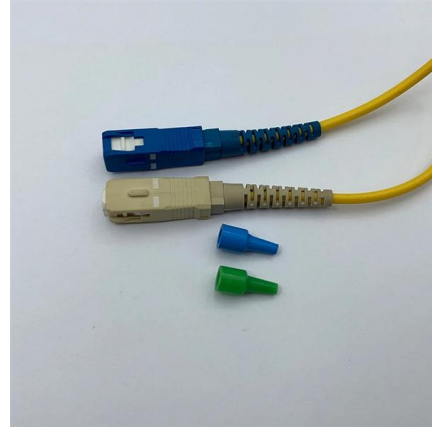


Ultimate Guide to Garden Lighting Installations (2026)

We will include safety measures, tips and tricks, as well as garden lighting effects to help you decide on how you can install and layout

How To Wire A Distribution Board (DB Board): A Step-By-Step Guide

A distribution board (DB board), also known as a fuse box or breaker panel, is essential for managing electrical circuits in a building. It distributes electrical power from the main supply to



Garden Light Wiring Diagram (High Voltage and Low

The main purpose of garden lighting is to provide enough light for safety and to highlight special features of the garden at Night or after dark. When



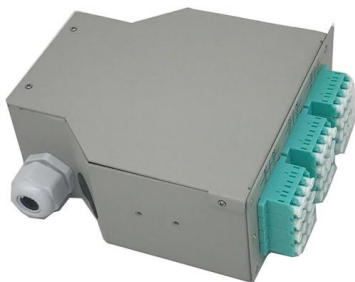
Garden Lighting Installations: Top Tips

Former electrician Chris Hudson, now owner of Hudson Lighting, shares his top tips for ensuring longevity in garden lighting installations.



How to Install Outdoor Lighting and an Outlet

Underground wiring puts light and power anywhere in the yard. We'll show you how you can do it easily and safely. Run an underground electrical line





What are the requirements for lighting distribution box wiring?

In short, when wiring the lighting distribution box, appropriate wires and terminals should be selected, and the wiring should be carried out in strict accordance with the national electrical safety standards.



Illuminate Your Outdoors: A Comprehensive Guide on How to Wire Garden

Transforming your garden into a beautifully illuminated sanctuary can significantly enhance both its aesthetic appeal and functionality. Properly wired garden lights not only accentuate your landscaping

Wiring Garden Lights: Outdoor Installation Guide & Tips

Learn how wiring garden lights is done safely. Complete guide covering cables, SWA glands, waterproof connectors and outdoor installation tips.



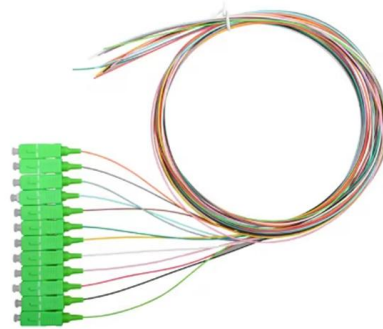
Distribution Box Wiring Steps

?Wiring and Binding? ?Wiring Direction?: Wiring between the main circuit breaker and each branch circuit breaker in the box generally goes on the left, and



Landscape Lighting Wiring Diagram Guide

Explore wiring diagrams for outdoor lighting setups. Learn how to properly connect and install lights for various outdoor environments and ensure safety and



Garden Light Wiring Diagram (High Voltage and Low

Hi, in this article, we are going to see the Garden Lighting System Wiring Diagram. We will see the connection with a timer also, so the light can

How to Wire Garden Lights

The voltage and wattage you choose will determine how bright your garden lights are, how much energy they use, and how safe they are. Here are some voltage

Waterproof and dustproof, reliable and safe

The outer classic sink design allows the sealing ring of the cabinet and door to be seamlessly compressed without leaving a trace of gaps



Landscape Lighting Wiring Made Easy: A Step-by-Step Guide

Creating a beautiful outdoor lighting display can enhance the ambiance of your home and garden. Installing landscape lighting may seem like a daunting task, but with the right methodology, it can be



How to Wire a Home Distribution Box

Welcome to our channel! In this video, we'll walk you through the process of wiring a home distribution box with a detailed connection diagram. Whether you're an electrician or a DIY enthusiast



Installing Outdoor Lighting Safely: Your DIY Guide

Transform your garden into a beautifully lit sanctuary with our step-by-step guide on outdoor lighting installation. As the sun sets, your outdoor space

Understanding Distribution Boxes: A Comprehensive Guide

A distribution box, also known as a power distribution box or electrical distribution box, is used to distribute electrical power safely to multiple



How to Install Outdoor Lighting: 14 Steps (with Pictures)

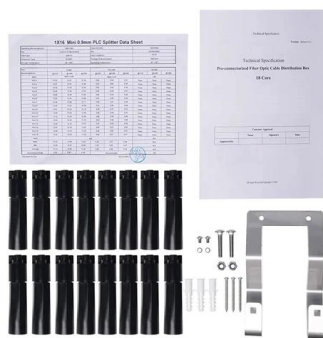
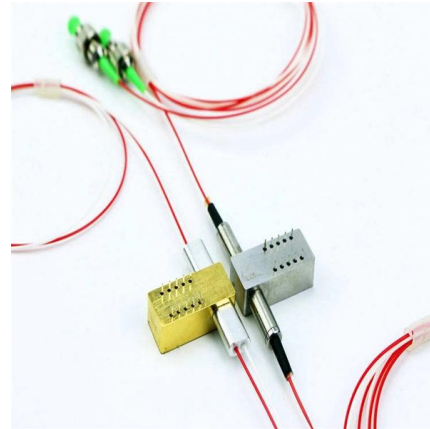
Outdoor lighting, from flood lights to motion sensor lights to simple landscape lighting, is a popular method of increasing lawn security and establishing mood and atmosphere in the evenings. The process of installing





The Complete Guide to Landscape Lighting Wiring: A

Learn how to wire landscape lighting with this comprehensive guide. Discover step-by-step instructions and helpful tips for a successful installation.

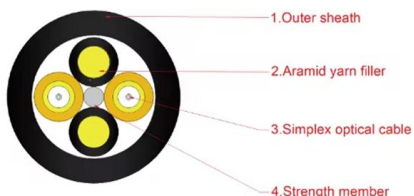


Distribution boxes

In this case, we recommend BEGA distribution boxes for installation in soil. After connecting the electrical lines to the terminals, the distribution box must be filled

Distribution boxes

Distribution boxes for installation in soil For through-wiring garden and pathway luminaires and connecting pillars Through-wiring within the luminaire is not



ephesus-remote-distribution-installation-manual

Read and understand this entire manual and any additional site-specific installation documents before attempting to assemble, install, or operate the luminaire. If you have any questions regarding the



How to Install Garden Lighting Wiring: A Complete Guide to Illuminate

Learn how to install garden lighting wiring with our step-by-step guide! Transform your outdoor space into a beautiful nighttime oasis.



High-Quality Electrical Lighting Distribution Boxes Explained

These versatile components are essential for ensuring safe and efficient operation of lighting installations in diverse settings, from street lighting to commercial buildings. In this comprehensive guide, we'll

Contact Us

For datasheets, pricing, or custom high-speed optical interconnect solutions, please visit:
<https://www.syropy.com.pl>