

Wiring of switches in explosion-proof distribution boxes





Wiring of switches in explosion-proof distribution boxes



Explosion protective components & systems , Products , ABB

From its global facilities ABB manufactures a wide range of ATEX, IECEx, UL, CSA approved electrical products for hazardous area applications. These include cable glands and lighting ranges.



Energy Distribution

BARTEC offers one of the most extensive ranges of explosion-proof and substance-resistant components, devices, and systems for controlling, switching, and

BXM (D)53 Explosion proof Distribution Boxes

Main switch and branch switch are operated with external rotary actuator. Internal wiring to the terminal is complete. International brand of explosion-proof terminal



Explosion proof Power Distribution Panel Box

Power Distribution panel box - Hazardous locations for explosive gas mixtures: Zone 1 and Zone 2. Explosive gas mixtures: Class IIA, IIB, and IIC.



Ex Isolation Switch/Safety Switch/Circuit Breaker Manufacturers

CZ Electric Co., Ltd is an Explosion-proof isolation switch manufacturers and Explosion-proof safety switch, Explosion-proof circuit breaker (MCB) box factory.

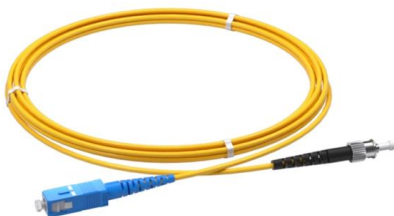
Explosion Proof Wiring: Essential Standards for Industrial Safety

The stakes are straightforward: proper explosion proof wiring prevents fires and explosions; improper wiring creates the conditions for them. Before selecting a single cable gland or



How to Install Explosion-Proof Distribution Box

3. Regularly inspect the explosion-proof distribution box for any damage to components. The installation inclination of the distribution box should





Explosion Proof Power Distribution Boxes

Flameproof and explosion proof, these power overhaul distribution boxes are suitable for use in hazardous areas. Specs: Ex mark: Ex de IIC T4 Gb DIP A21 TA,T4

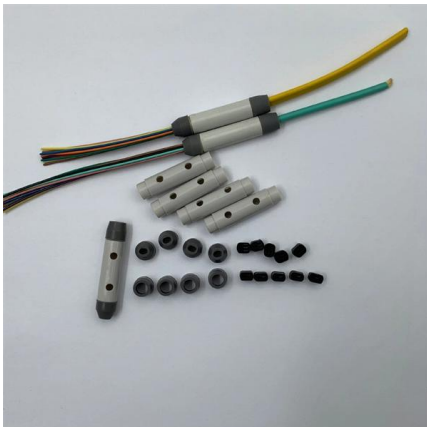


Internal Wiring Diagram of Explosion-Proof Distribution Box

Customers often inquire about the internal wiring of explosion-proof distribution boxes. Today, the team at Explosion-proof Electrical Equipment

Explosion-Proof Wiring Devices :: PLATT ELECTRIC SUPPLY

1 Pole, 1-Gang, EFS Front Operated Switch, Cover Only, Non-Factory Sealed Cover Furnished with Device Mounting Screws. For use with EFD Type Outlet Boxes.



Wiring Diagram of 1p, 1p+n, 2p in Explosion-Proof Distribution Box

Today, we share a series of standard wiring procedures and precautions, with a focus on residential explosion-proof distribution boxes and their circuit configurations:



Wiring Diagram of Dual Power Explosion-Proof Distribution Box

The installation and maintenance of dual power source explosion-proof distribution boxes often involve intricate wiring processes. Special care is needed, especially when extending



Distribution Boxes and Empty Enclosures

Boxes and Empty Enclosures Distribution Boxes BXM(D)S1 Series Explosion-proof Illumination (Power) Distribution Boxes (Ex de liB) Explosion protection to -CENELEC -IEC -NEC Can be used in Zone 1

Installation and Wiring of High and Low Voltage Explosion-Proof

Generally, professional electricians should handle the wiring of explosion-proof distribution boxes, as they possess the necessary skills and safety equipment. In non-urgent cases,



Explosion Proof Enclosure Comprehensive Guide

The construction of explosion-proof enclosures conforms to very high safety design requirements as specified by the National Electrical Code (NEC) or

Explosion-Proof Distribution Boxes: Special



Installation Requirements

Unlike standard distribution boxes that could become shrapnel shards in volatile environments, explosion-proof containers are engineered fortresses that absorb, contain, and vent catastrophic



Installation guide for hazardous areas

All circuit wiring is run in conduit and junction boxes approved for explosion-proof installation. Explosion proof transducers and wiring must be installed according to ANSI/UL 1203-1994, Explosion-Proof

BXM (D)51 Series Explosion proof Distribution Boxes

BXM (D)51 Explosion proof Distribution Boxes
Explosion protection to -CENELEC -IEC -NEC Can be used in Zone 1 and Zone 2 Zone 21 and Zone 22 Class I, Zone



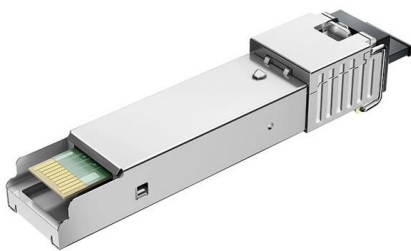
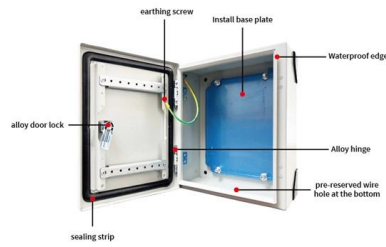
Explosion proof distribution box standards and installation issues

Switch terminals should be matched with the wire cross-section; wiring after component installation should be neatly arranged and tied into a bundle with nylon tape to be fastened behind the board.



BXM (D)81 Explosion proof Distribution Boxes Lighting

BXM (D)81 Explosion proof Distribution Boxes Lighting or Power Explosion protection to -CENELEC -IEC -NEC Can be used in Zone 1 and Zone 2 Zone 21 and Zone



Explosion-proof distribution box internal connection of electrical wiring

Second, the wiring considerations: Explosion-proof distribution box is a total circuit distribution box for all users. The distribution box is a mass parameter on the data.

50032072: GSX Series Explosion Proof Safety Switch

Wire the double pole units by connecting lead wires to the terminals nearest the conduit opening first. An internal grounding screw is located on the right side; an external grounding screw is located on the



How Can Explosion-Proof Wiring Boxes Ensure Safety in Hazardous

Conclusion In conclusion, the implementation of explosion-proof wiring boxes is a critical strategy for ensuring safety in hazardous areas. By understanding their design, adhering to



BXM (D)8061 Explosion proof Distribution Box

Main and branch switches are operated via an external rotary actuator Completed with internal wiring to the terminals Utilises quality, international brand explosion



HRMD93 Explosion proof Distribution Panels (Ex d IIB+H2)

Explosion proof Distribution Panels (Ex d IIB+H2)
Explosion protection to - IEC - CENELEC - NEC
Can be used in Zone 1 and Zone 2 Zone 21 and Zone 22

Contact Us

For datasheets, pricing, or custom high-speed optical interconnect solutions, please visit:
<https://www.syropy.com.pl>