



**Syropy AI Connectivity**

# **Wiring method for machine tool power distribution box**





## Overview

---

Busbar connection is the most common electrical connection method in distribution boxes. Choose the right box based on environment (indoor/outdoor), load capacity, and durability. This publication gives you general guidelines for installing an Allen-Bradley industrial automation system that may include programmable controllers, industrial computers, operator-interface terminals, display devices, and communication networks. The Low Voltage Directive refers to any electrical equipment designed for use at a rated voltage from 50 to 1000 V for alternating current and from 75 to 1500 V for direct current.



## Wiring method for machine tool power distribution box

---



### Understanding Circuit Breaker Wiring Configurations in

Correct wiring methods for circuit breakers within distribution boxes are fundamental to ensuring electrical safety and compliance with established codes.

### Step-by-Step Guide to Install MCB Distribution Box

Learn how to safely install an MCB distribution box with this comprehensive guide. Step-by-step instructions to ensure correct installation.



### Power Distribution Systems: Complete Design Guide

Discover how industrial power distribution systems convert utility power into safe, reliable electricity--minimizing downtime, enhancing safety, and reducing energy

### The installation requirements for the distribution box

Learn how to install a distribution box safely and correctly. Covers wiring, placement, standards, and expert tips for a compliant setup.



### Step-by-Step Guide to Wiring a 3 Phase DB Box

Learn about the wiring process for a 3 phase distribution board (DB) box, including the necessary steps and safety precautions. Understand how to connect the



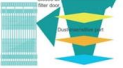
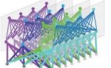

### POWER DISTRIBUTION BOX ASSEMBLY GUIDE

Phase 3's Powersafe Sequential Mating Box controls the connection sequence of incoming / outgoing high current cable connections. The sequence ensures that the Earth connection is made first and



### What are the electrical connection methods of industrial

In short, there are many types of electrical connection methods for boxes, and different connection methods have their own advantages,

All-Optical Backplane	Many-Degree WSS	Digital Optical Layer
 <p>→ Zero fiber connections at the optical layer, three layers of outboard design, and stable routing for 25 years.</p> <p>→ Innovative multi-level dustproof and optical port alignment technologies, ensuring high reliability.</p>	 <p>→ 32 degrees, non-blocking flexible grooming.</p> <p>→ 0 Componentless, 0A-free, high reliability. 2x wavelength dropping efficiency compared with traditional boards.</p>	 <p>→ Use of OFDM pilot tone and high-precision wavelength monitoring technologies to visualize the fiber quality, wavelength resources, and performance of the OXC system, achieving digital OSM.</p>



## Industrial Automation Wiring and Grounding Guidelines

Purpose This publication gives you general guidelines for installing an Allen-Bradley industrial automation system that may include programmable controllers, industrial computers, operator



### Power Distribution Boxes Explained Simply

Learn what a power distribution box is, how it works, key components, types, and why it's vital for safe and efficient electrical systems.



### Distribution Box Wiring Steps

?Marking and Inspection? ?Power Supply Marking?: The AC, DC or different voltage levels of the power supply in the distribution box should be



### Size determination, installation method and wiring mode

However, many electrical beginners don't know how to install and connect the distribution box. Next, let's introduce the wiring mode, installation method and



## The installation requirements for the distribution box

PDF file

## Industrial Automation Wiring and Grounding Guidelines

To guard against coupling noise from one conductor to another, follow these general guidelines (Table B) when routing wires and cables (both inside and outside of an enclosure). Use the spacing given in



### How to determine the size, installation method and

(1) Wiring method of distribution box 1)  
Generally, the incoming line of power distribution box adopts five wire system, that is, a, B and C three-way phase line

### Electrical installation handbook

The electrical installation handbook is a tool which is suitable for all those who are interested in electrical plants: useful for installers and maintenance technicians through brief yet important electrotechnical



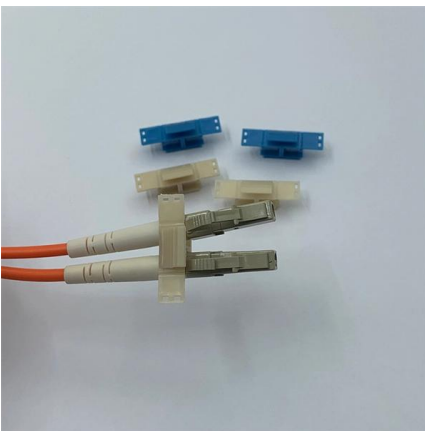
### JXF Power Distribution Box (Cabinet) User Manual

Open-mounted distribution box installation method: Assemble four bolts into the four holes on the corners and tighten them into the expansion pipes to fix the box.



### **The Ultimate Guide to CNC Machine Electrical Wiring: Everything You**

Section 4: Step-by-Step Guide to Wiring a CNC Machine Provide a detailed, step-by-step guide on wiring a CNC machine. Start with preparing the wiring harness, then move on to connecting the



### **How to Wire a Home Distribution Box**

The above mentioned electrical wiring accessories and protective devices are used to control and distribute electric supply (safely to connected

### **How to Install a Cable Distribution Box Safely and**

In modern electrical systems, cable distribution boxes (also known as electrical distribution boxes or distribution boxes) play a crucial role as the key





## Electric distribution box wiring tutorial (very simple and practical)

In this video, we are going to wire a power distribution box. This small box has an rccb switch that protects the outputs from electric shock and also has a miniature switch that protects the



### What hand and power tools are used to install a

Install distribution box systems with essential hand tools like screwdrivers and pliers, plus power tools such as drills and impact drivers for efficient setup.



### Distribution Box Wiring Steps

?Wiring Direction?: Wiring between the main circuit breaker and each branch circuit breaker in the box generally goes on the left, and the wiring out of

### Wiring Methods for Industrial Machinery

Because every type of machine has unique requirements for wiring methods, operator safety depends on your understanding the differences between rules in



### Understanding Distribution Boxes: A

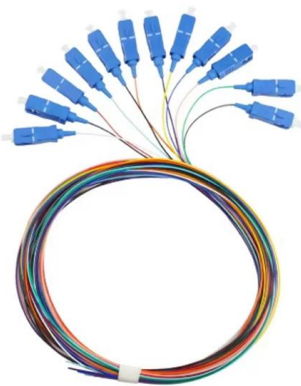


## Comprehensive Guide

A distribution box, also known as a power distribution box or electrical distribution box, is used to distribute electrical power safely to multiple

### The Complete Guide to Distribution Box: Installation, Types & More

Blog The Complete Guide to Distribution Box: Installation, Types & More By Admin Aug 2, 2025  
No Comments # distribution box Introduction  
Electrical systems power our homes, offices, and



### Electric Power Distribution for Industrial Plants

Electric Power Distribution in Industrial Plants covers the fundamentals of motor wiring and elementary distribution system for low voltages 600 volts or less. Initially the course was sponsored by West

### Power Distribution Equipment

Introduction Power Distribution Equipment is a term generally used to describe any apparatus used for the generation, transmission, distribution, or control of electrical energy. This section concentrates





### **Power Distribution Box**

The Power Distribution Box wiring must be carried out following the instructions in this instruction manual. Incorrect wiring may result in electric shock and/or fire.



## **Contact Us**

---

For datasheets, pricing, or custom high-speed optical interconnect solutions, please visit:  
<https://www.syropy.com.pl>