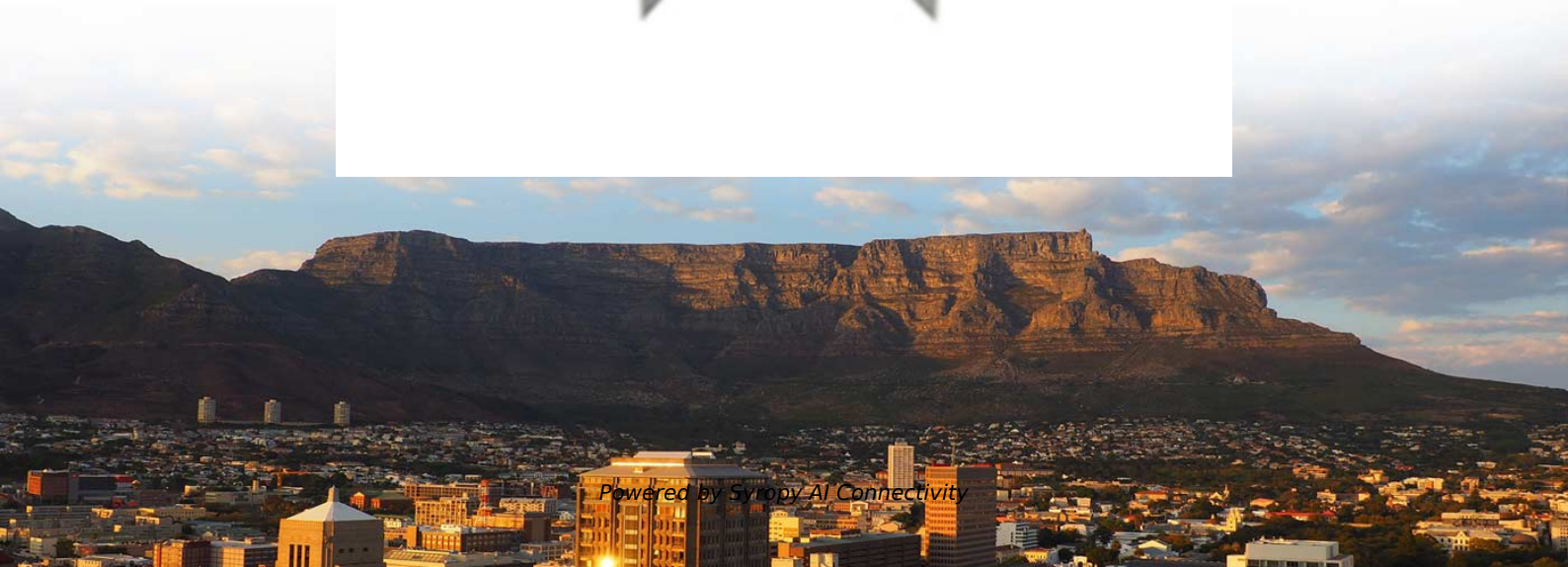




Syropy AI Connectivity

Wiring Requirements and Standards for Power Distribution Cabinet Retrofitting





Wiring Requirements and Standards for Power Distribution Cabinet



Ground Bus Bar: Code-Compliant Selection & Sizing

Learn what a ground bus bar is, how to size and select one, and how to install it to NEC/UL/TIA best practices for panels, racks, and telecom rooms.

Electrical regulations and standards

These regulations may be based on national standards derived from the IEC 60364: Low-voltage electrical installations. Standards This Guide is based on relevant IEC standards, in



Microsoft Word

WIRING STANDARD BOXES AND CABINETS The wiring must be performed using flexible T wires with end fittings arranged in ducts made from an insulating material with a cover (wiring ducts).

Electrical installation handbook

There is a difference between EN Standards and Harmonization Documents (HD): while the first ones have to be accepted at any level and without additions or modifications in the different countries, the



2016_Guide_IEC_EN61439_en_98171000_5_2 016 dd

The new standard clearly regulates the responsibility for a distribution board placed on the market. It distinguishes between the original manufacturer (system manufacturer) and the manufacturer of the



Key Standards for Electrical Cabinet Wiring Practices

Discover the key standards for industrial electrical cabinet wiring, including wiring diagrams, circuit breakers, and safety



Retrofit versus Replace: What Should you do with our

Retrofitting power distribution systems extends equipment's life and keeps it compliant with new standards while minimizing the environmental impact





Switchgear retrofitting and upgrades

Retrofitting standards " " was created in response to the deficiencies in design and testing. It has been extensively revised four times as experience has dictated additional testing and verification



International-electrical-standards-regulations

Working on an international project electrical engineers are often bewildered by the extensive amount of electrical standards and wiring regulations which determines their decisions.

A Complete Guide to XL-21 Power Distribution Cabinet Specifications

Conclusion XL-21 power distribution cabinets are indispensable components in modern electrical systems, offering reliable power distribution with advanced safety features. Understanding



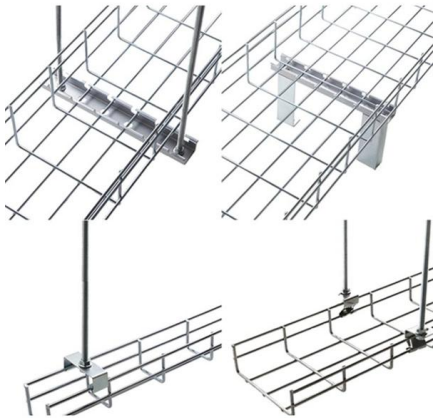
Requirements for Electrical Installations

Equipment meeting the requirements of Regulations 710.560.9.1 and 710.560.11 shall be connected within 15 s to a safety power supply source capable of maintaining it for a minimum period of 24 h,



Requirements for Electrical Installations READ N RERDTINR

n 722 applies to electric vehicle charging installations. It modifies the general requirements for protection against electric shock, and includes specific requirements with regard to PME systems, socket



Electrical Installation Guide, IEC Standards , Schneider

Our complimentary Electrical Installation Guide provides you with the guidance

Discover Europe's digital cultural heritage , Europeana

Hier sollte eine Beschreibung angezeigt werden, diese Seite lässt dies jedoch nicht zu.



Electric System Retrofitting Guide for Technicians

A comprehensive guide for electrical technicians on retrofitting electrical systems in power transmission, control, and distribution leveraging BI and analytics.



Electrical regulations and standards

This Guide is based on relevant IEC standards, in particular IEC 60364. IEC 60364 has been established by engineering experts of all countries in the world comparing their experience at



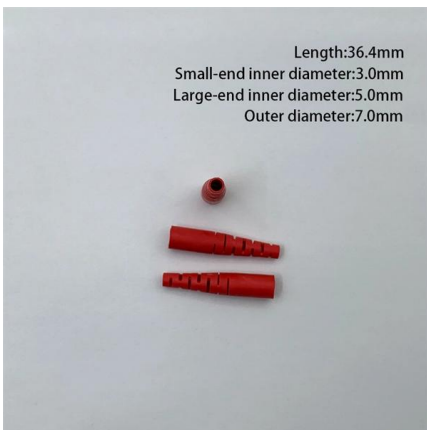
Length:39.5mm
Small-end inner diameter:2.0mm
Large-end inner diameter:5.0mm
Outer diameter:5.65mm/6.5mm

Power Distribution Equipment

Introduction Power Distribution Equipment is a term generally used to describe any apparatus used for the generation, transmission, distribution, or control of electrical energy. This section concentrates

Electrical installation handbook

Electrical equipment Any item used for such purposes as generation, conversion, transmission, distribution or utilization of electrical energy, such as machines, transformers, apparatus, measuring



Length:36.4mm
Small-end inner diameter:3.0mm
Large-end inner diameter:5.0mm
Outer diameter:7.0mm

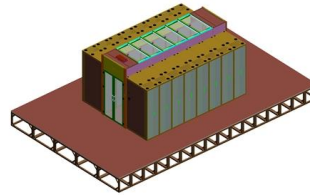
Power Distribution Equipment

Power Distribution Equipment is a term generally used to describe any apparatus used for the generation, transmission, distribution, or control of electrical energy.

Switchgear retrofitting and upgrades



Why engineering & testing matters Retrofitting and upgrading older switchgear assemblies can be a cost-effective method to extend the life of your electrical distribution capital and reduce maintenance

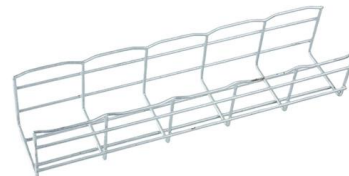


An Introduction to Interior Electrical Distribution Systems

Circuits originating from within the facility that extend beyond the facility envelope. Wiring and connections for supplemental grounding systems. Wiring from and connections to non-utility

Transformer and distribution cabinet equipment installation, standards

The installation of complete sets of distribution cabinets, control cabinets (tables, boxes), and distribution boxes (panels) shall comply with the following regulations:



Primary Service Standards

Customer loads fed from the Subtransmission Power Service installation are typically high flicker welding loads or standard power loads that are not economically fed from the DTE medium voltage



The installation requirements for the distribution box

Learn how to install a distribution box safely and correctly. Covers wiring, placement, standards, and expert tips for a compliant setup.



Choosing the Right Power Distribution Cabinet for Your Electrical Needs

Discover the importance of selecting the right power distribution cabinet for system reliability, efficiency, and compliance with industry standards. Learn about critical features, material

Low Voltage Installation: Wiring & Cabling Full Guide

Low voltage wiring systems are essential for modern businesses seeking fast, reliable connections that traditional electrical systems can't provide.



SUPPORTS

DIN RAIL INSTALLATION



IEEE 525-2007_accepted

IEEE-SA Standards Board Abstract: The design, installation, and protection of wire and cable systems in substations are covered in this guide, with the objective of minimizing cable failures and their



Contact Us

For datasheets, pricing, or custom high-speed optical interconnect solutions, please visit:

<https://www.syropy.com.pl>