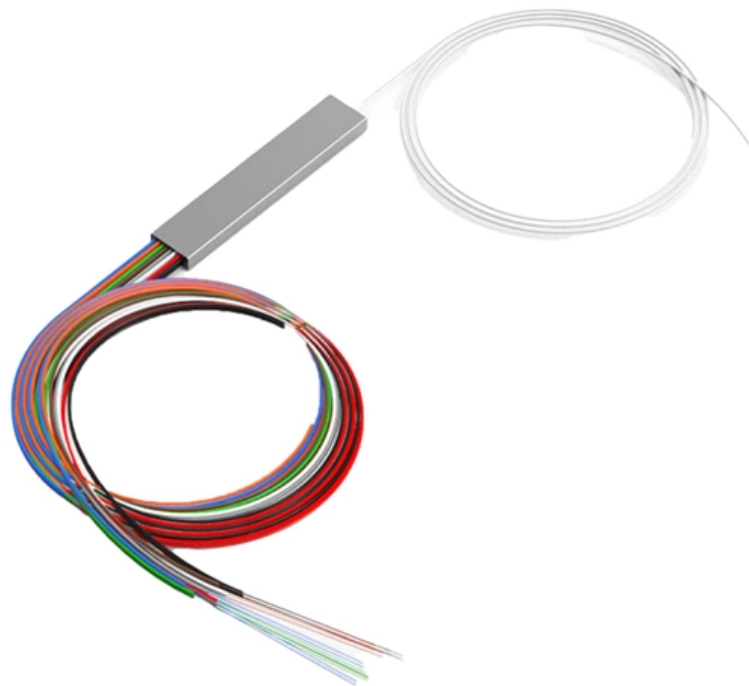


# **Wires connected to the high-voltage distribution box**





## Overview

---

It uses higher voltages (than urban distribution), which in turn permits use of galvanized steel wire. Electric power begins at a generating station, where the potential difference can be as high as 33,000 volts.



## Wires connected to the high-voltage distribution box

---



### High-voltage power distribution box design resources , TI

View the TI High-voltage power distribution box block diagram, product recommendations, reference designs and start designing.

### High Voltage wire Harness, functionality and safety

The HV wire harness connects the main and auxiliary modules using different cross sections, terminal sizes, and connector shapes.



### How Does a Power Distribution Box Work

In this article, we'll walk you through the step-by-step process of how power flows through a distribution box, what components are involved, and why each part is

### How It Works: Electric Transmission & Distribution and Protective

Distribution systems, typically rated below 34 kV, can tie directly into high-voltage transmission networks or be fed by sub-transmission networks via "step down" substations.



### Complete Guide For Distribution Boxes Types

Distribution boxes, also known as junction boxes, electrical boxes, or panelboards, are essential components in electrical distribution systems. They serve as



### PJM Learning Center

Power, specifically the voltage level, sent through transmission lines is reduced, or "stepped down," via transformers and sent through distribution lines, which are then connected to homes and businesses.



### Anatomy of electric vehicle high voltage distribution box (PDU)

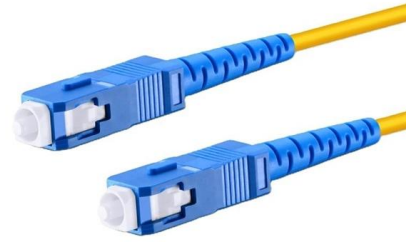
Large-scale high-voltage distribution box enterprises at home and abroad can provide more than 60% of core components. The scale and standards of high-voltage distribution boxes are generally



### how does a power distribution box work



1. Receiving electric energy: The fiber distribution boxes is connected to the power station or substation through cables and receives high-voltage



### High Voltage Distribution Box - Rawsuns

High voltage distribution box is the control part of EV power supply, which has the functions of power distribution, current measurement, short circuit protection,

### High Voltage Cable: Everything You Need to Know

In this article, we will uncover the high voltage cable, including the definition, types, and sizes, as well as how to identify and connect them. Now let's



### The installation requirements for the distribution box

Testing and Inspection After Installation After installing your distribution box, it's important to check everything before turning on the power.



## Basics in low voltage distribution equipment

Low voltage distribution equipment typically operates at less than 600 volts; in contrast, medium voltage equipment affords a wider range of 600 to 38,000 volts. This paper provides a basic overview of the



## What are the components inside the high-voltage distribution cabinet?

Box-type high-voltage distribution cabinet consists of shell, circuit breaker, high-voltage load switch, instrumentation and cable connection components. Suitable for outdoor use, with

## Welcome to the Sciences at Smith College

You can see at the back several three-wire towers leaving the substation. Typical voltages for long distance transmission are in the range of 155,000 to 765,000



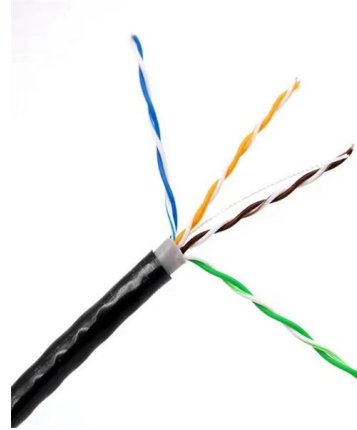
## A Beginner's Guide to High Voltage Cable: Applications,

Everything new users need to know about high voltage cable--from structure and types, to installation and safety tips. Get expert advice from LX



## Industrial Control Systems Cyber Security Institute

Hier sollte eine Beschreibung angezeigt werden, diese Seite lässt dies jedoch nicht zu.



### How Does a Power Distribution Box Work

Learn how a power distribution box works step-by-step--from incoming power to circuit protection and smart monitoring--for safe, efficient electricity delivery.

### 10.1 Introduction to the Distribution System

The voltages of bulk electricity transmission (~135 kV to 500 kV) are much too high for distribution to customers. Lower voltage levels are required for electricity to flow safely through smaller cables and



### How to Install a Cable Distribution Box Safely and

In modern electrical systems, cable distribution boxes (also known as electrical distribution boxes or distribution boxes) play a crucial role as the key



## Cable Junction Boxes: 8 Types, Tech Specs & Installation

Explore 8 types of cable junction boxes, their tech specs, installation tips, and maintenance. Get expert insights on selection,

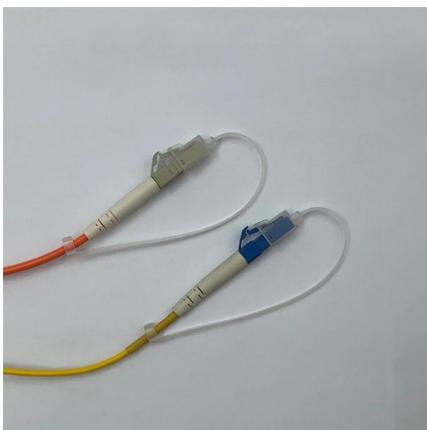


## Power Distribution Box Essentials: Functions, Types

Easy distribution via Power distribution box + Longer Lifespan of Equipment: Electrical appliances and machines are made to last longer due to

## High Voltage Wire & Cable Guide

Learn all about high voltage wire and cable with IEWC. Discover the uses, benefits, specifications and industries relying on high voltage wire and cable.



## Power Distribution Boxes Explained Simply

Bus bars and internal wiring help distribute electricity to each connected circuit efficiently. The box keeps everything safe by balancing the load,



## Contact Us

---

For datasheets, pricing, or custom high-speed optical interconnect solutions, please visit:

<https://www.syropy.com.pl>