

Width of busbar compartment in GCS switchgear





Width of busbar compartment in GCS switchgear

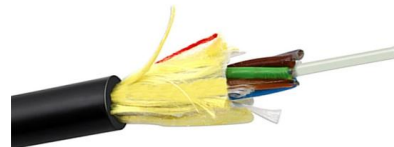


Understanding the GCS Type Low-Voltage

A: Key components of the GCS low-voltage withdrawable switchgear include the functional unit compartment, main switch, and steel plate cabinet, all

Low-Voltage Switchgear Types: GGD, GCK, GCS, MNS

Fixed-type low-voltage switchgear features permanently installed components with fixed wiring. All electrical devices, including circuit breakers,



GAS INSULATED SWITCHGEAR

Where a fault would result in the need to switch out parts of a bus coupler or bus section, there is no requirement to have the bus coupler or bus section bay gas zones put back into service provided the

ABB PC30

The busbar compartment is located in the middle section of the switchgear. Main busbars can be located at the top, in the centre or at the bottom of the panel depending on the selected design and



Understanding the GCS Type Low-Voltage

Busbar Compartment: It carries the conductive materials that carry electrical current integrating the electrical equipment sections to external circuits.



Busbar Design Standards for MV Switchgear

The design standards for MV switchgear busbars are based on a comprehensive, multi-dimensional system, primarily



The Ultimate Guide to GCS Low-Voltage Withdrawable

Q: What is the significance of the cable compartment in GCS low-voltage withdrawable switchgear? A: The cable compartment is crucial for





Low Voltage Power Withdrawable Switchgear Cabinet GCS

Enecell's GCS Low-voltage Withdrawable Electrical Switchgear is suitable for power distribution systems, Low Voltage Power Withdrawable Electrical Switchgear



UNIS5GB 0704.pmd

Busbar compartment The busbar compartment is located on the top of the cubicle. This compartment contains the main busbars that interconnect between switchgear cubicles.

Technical Specification Metal-clad Switchgear

Technical Specification Metal-clad Switchgear
Technical Specification Metal-clad Switchgear
This specification covers the basic design and functional requirements medium voltage metal-clad



IEC Standard For Busbar Sizing: Complete Guide To

The IEC standard for busbar sizing provides detailed guidelines to help engineers select appropriate busbar dimensions. This ensures that systems



LV Switchboard Dimensioning Guide , PDF , Electrical

LV Switchboard Dimensioning Guide - Free download as PDF File (.pdf), Text File (.txt) or view presentation slides online. This document provides guidelines for



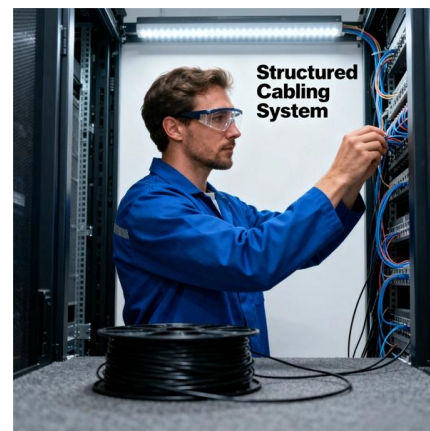
GCS (Low Voltage Withdrawable Switchgear)-Beijing HCRT

- The frame utilizes 8MF type open-section steel, ensuring flexible and convenient framework assembly;
- The switchgear cabinet's functional compartments are mutually isolated. These compartments are



Planning and installation of the low voltage switchgear

As for transformers and medium-voltage switchgear, an arcing fault occurring in the low-voltage switchgear can lead to dangerous interferences with



Technical Brochure Enclosure o Busbar Chamber System (BBS) o

Technical Specification ABB "BBS Busbar Chamber Systems" is made of 1.5mm or 2mm steel plate finished with impact-resistant stove textured grey epoxy powder coating to RAL7032 (standard) or



Technical Specification for Gas Insulated Metalclad 36kV Switchgear

1.0 A) SCOPE: This specification covers the design, manufacture, assembly, testing at manufacture's works before dispatch and delivery of metal clad partitioned, SF-6 gas insulated, 36kV single busbar



Low Voltage Withdrawable Switchgear GCK, GCS,

2) Withdrawable type motor control center & small current power distribution center (GCK?GCS?MNS): Withdrawable GCK?GCS?MNS cabinet, there also has



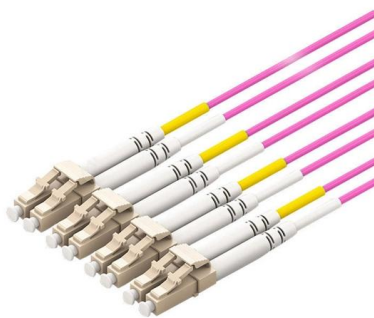
MNS Low Voltage Switchgear System Guide

For applications where a 50% or 100% neutral size is required due to unbalance or harmonic distortion as well as for 4 pole switching, the neutral conductor can be arranged within the busbar compartment



ZX0 block design Gas-insulated medium voltage switchgear

LSC2A: On access to all accessible compartments of a panel (in this case cable termination and fuse box), the busbar and all other panels can remain energized. Note from VDE 0671-200:2012-08 / IEC





DW-2

2. COMPARTMENTS 2.1. SWITCHGEAR COMPARTMENT the withdrawable magnetic "vacuum" driven circuit breaker switch, acts as the physical separation between the busbar set and the cable



Bid Documents for Transmission System Package

v) The switchgear shall be of the free standing, self-supporting with easy accessibility to all the parts during installation & maintenance with all high-voltage equipment installed inside gas insulated

GCS (Low Voltage Withdrawable Switchgear)-Beijing HCRT

Drawer variations only occur in the height dimension, while the width and depth dimensions remain unchanged. This ensures excellent interchangeability among drawers of the same functional unit.



GCS Low Voltage Switchgear Cabinet , Cable

Compartmentalized Design: The functional compartments of the switchgear are isolated from each other, divided into functional unit compartments, a busbar





GCS Low Voltage Switchgear Cabinet , Cable Switchgear Box , HCRT

Compartmentalized Design: The functional compartments of the switchgear are isolated from each other, divided into functional unit compartments, a busbar compartment, and a cable compartment,



Busbar Design Standards for MV Switchgear

Busbar design within Medium Voltage (MV) switchgear is a critical aspect, fundamentally ensuring the safe, reliable, and

Busbar

Pre-engineered busbar systems take full advantage of these standardized metric widths. For the most part, finding an adapter to work with a particular component simply involves checking for a matching



Low Voltage Switchgear Design & Calculation Presentation

Learn LVSG design, construction, and calculations. Covers enclosures, busbars, IP ratings, and forms of separation. Electrical engineering presentation.



Contact Us

For datasheets, pricing, or custom high-speed optical interconnect solutions, please visit:

<https://www.syropy.com.pl>