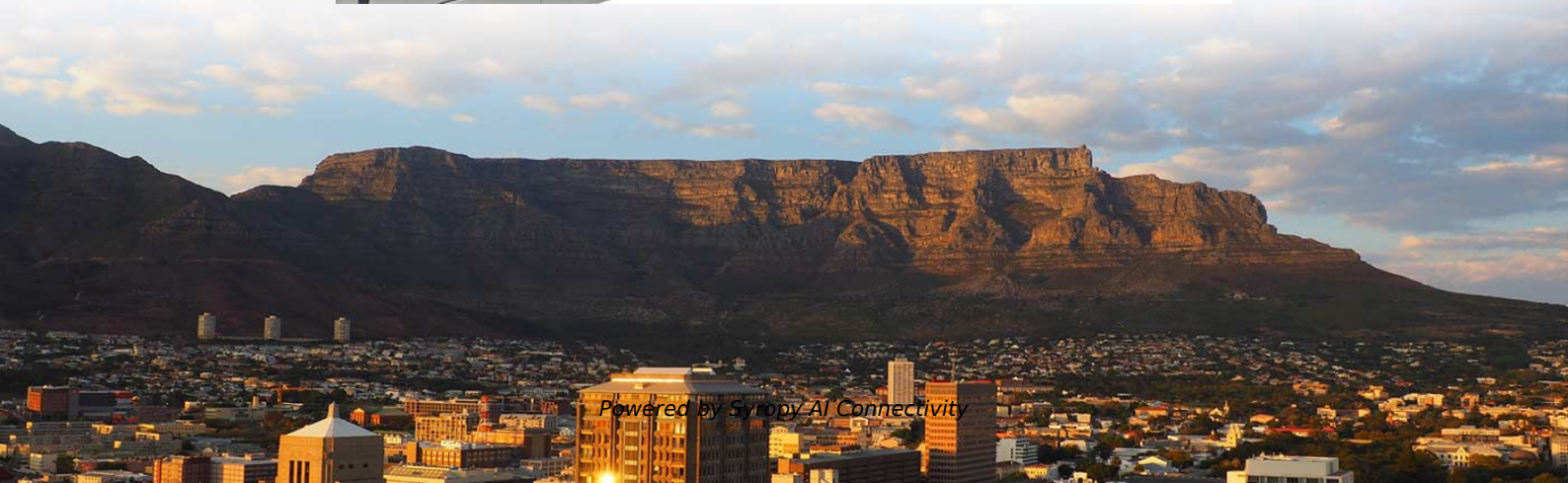


Why does BRAS need to be connected to an aggregation switch





Overview

They support link aggregation protocols such as Link Aggregation Control Protocol(LACP) and Static Link Aggregation, which allow multiple physical links to be combined into a single logical connection. An Aggregation or "Top-of-Rack" switch is designed to connect everything in a rack at high speeds, then have an even bigger pipe out to the rest of the network. Most home-users do not need this, but enterprise users will see the benefit both from the increased throughput, as well as the redundancy it provides. Even though it is not going to be used for the same purpose, it is common that the connection of dual-attached servers, storage, and other network-based services connect at this level or have their own block of switches that connect to the high-speed core switches in the same manner in the main.



Why does BRAS need to be connected to an aggregation switch

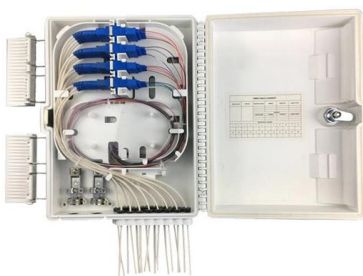


Networking: Link Aggregation

Generally speaking, link aggregation modes provide either fault tolerance or load balancing benefits. The benefits provided by each mode are summarized in the

Link Aggregation: Static vs Dynamic, LACP, and MLAG

By combining multiple physical links into one logical connection, link aggregation ensures that traffic continues to flow even when individual links fail.



Aggregation layer , FortiSwitch 7.6.0 , Fortinet Document Library

Its primary goal is to increase network scalability by providing a single place to interconnect multiple access switches and the core layer.

Why the aggregation switches in small home networks?

I see many people on here posting pictures of their racks where they have an aggregation switch with only one or two access switches connected to it. Why? Doesn't doing that introduce latency with zero



What Is an Aggregation Switch and How to Choose?

As the physical part of the aggregation layer, aggregation switches typically play a crucial part in the overall network architecture. So, what exactly is an aggregation

Unlock Speed with Ethernet Port Aggregation Guide

How Does Link Aggregation Increase Speed? A single connection might not keep up with the growing need for bandwidth. But, using multiple cables



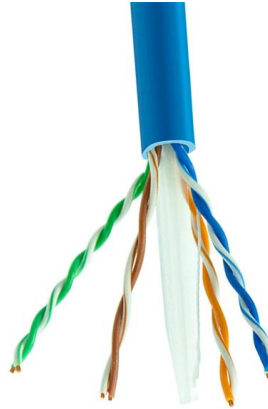
Understanding Broadband Aggregation Routers (BRAS)

It acts as a central point of aggregation for broadband traffic, connecting subscriber access networks to the core network of an Internet Service Provider (ISP).



What is Switch Aggregation, Its Role and Selection Advice

Compared to access switches, aggregation switches offer better performance and higher switching speeds. However, in some network architectures, there may be only access and core



The Features and Differences Between Core Switches and

As the aggregation point of access switches, the aggregation switch is required with the ability to process the access layer information and submits it to the upstream chain of the core layer.

What is an Aggregate Switch?

What is the difference between an aggregate switch and a core switch? An aggregate switch consolidates traffic from access switches, while a core switch forms the backbone of the



Aggregation Layer

Aggregation-layer submodule The aggregation-layer submodule plays a pivotal role in providing a highly reliable, scalable "middle layer" for bringing together the traffic from the access-layer submodule,



What is an Aggregation Switch? , Features and Practical Benefits

This article focuses on the question of what is an aggregation switch and how it works its uses and its implementation. Read till the end to learn this very important concept in network



Networking: Link Aggregation

You will need a switch that supports IEEE 802.3ad dynamic link aggregation. This mode provides fault tolerance and load balancing. Adaptive Transmit Load



Aggregation Switch

An Aggregation or "Top-of-Rack" switch is designed to connect everything in a rack at high speeds, then have an even bigger pipe out to the rest of the network. The Pro Aggregation does this with it's



Understanding the Role of Aggregation Switch in

Each aggregation switch undergoes extensive testing to ensure that it meets the highest standards of reliability and performance. Conclusion In



Aggregation Switch

An Aggregation or "Top-of-Rack" switch is designed to connect everything in a rack at high speeds, then have an even bigger pipe out to the rest of the network.



What is Link Aggregation and How Does It Work

What is link aggregation and how does it work? In this comprehensive article about link aggregation, learn the definition, working principle, types, and benefits of link aggregation.

Everything You Need to Know About Aggregation Switch

A: The primary purpose of an aggregation switch is to connect multiple access switches to a core layer switch, allowing for efficient data flow and



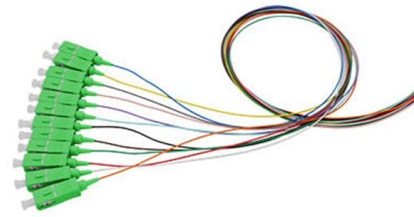
Broadband remote access server

A broadband remote access server (BRAS, B-RAS or BBRAS) routes traffic to and from broadband remote access devices such as digital subscriber line access multiplexers (DSLAM) on an Internet



Aggregated Ethernet Interfaces Overview

You can configure LAGs to connect a QFX Series product or an EX4600 switch to other switches, like aggregation switches, servers, or routers. This example describes how to configure LAGs to connect



All you need to know about fiber aggregation points

The tapped cables are then run through an aggregation switch, which is where the aggregation occurs. LACP is used to balance load and handle

What Is a BRAS? How Does a BRAS Work?

What Is a BRAS? A BRAS is an access gateway oriented to broadband network applications. It bridges broadband access and backbone networks, providing basic access methods



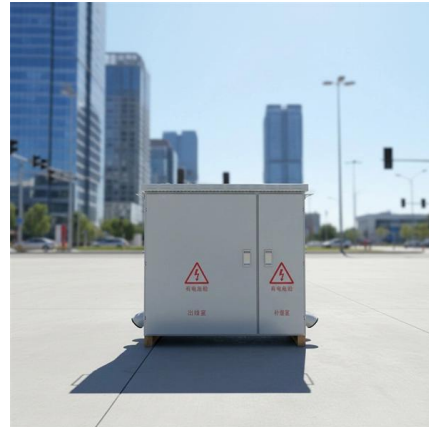
Link Aggregation: What is it, and How Does it Work?

Link aggregation is a way of bundling a bunch of individual (Ethernet) links together so they act as a single logical link. A fundamental for effective



What is an Aggregation Switch?

As the physical entity of the aggregation layer, the aggregation switch's primary function is to aggregate the data of the access layer switch and



Top Content on LinkedIn

Explore top LinkedIn content from members on a range of professional topics.

Port Aggregation FAQs

Port aggregation can increase maximum throughput, and allow for network redundancy. It does this by splitting traffic across multiple ports instead of forcing



Aggregation Switches

Why we need the aggregation switch? Data Aggregation: The primary function of an aggregation switch is to gather traffic from multiple access



Aggregation Switch

An aggregation switch refers to a type of switch used to connect multiple ToR switches to a core switch/router in a cloud data center network. It enables high-bandwidth aggregation ports to be



Broadband Remote Access Server

Broadband Remote Access Server (BRAS) BRAS are an essential part of broadband topologies to control subscriber access BRAS is the access point for subscribers, through which they connect to

What Are Aggregation Service Routers (ASR)?

What Are Aggregation Services Routers (ASR)? Aggregation services in routers and edge platforms help enable network edge routing. These devices combine traffic



Contact Us

For datasheets, pricing, or custom high-speed optical interconnect solutions, please visit:
<https://www.syropy.com.pl>