

Why do cables appear inside cable trays





Overview

Answer: Yes; cables are tied down in cable trays to keep the cables in the cable tray, to maintain spacing between cables, or to segregate or confine certain types of cables to specific locations. A cable tray is a metal or non-metal structure used to lay electrical cables and wires, serving to support, protect, and guide the cables. maintain spacing or to keep cables in place when the tray is ect the minimum bend ra-dius for cables as they exit the bottom of the cable tray. It acts as a dedicated pathway for power distribution and data transmission, often supporting cables hidden behind walls or above ceilings.



Why do cables appear inside cable trays

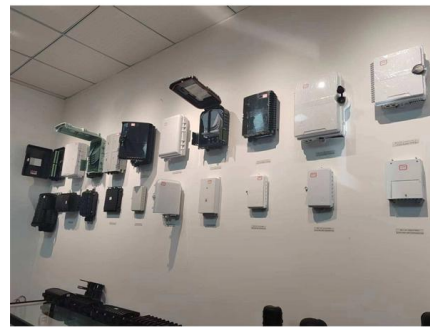


Reasons Why You Need Cable Trays for Cabling Installations

Reason #4: Limitless flexibility In terms of flexibility, cable trays rule the roost. Whether you are considering changing your wiring system from conduit to cable trays, you can do so without

Cable Tray purposes in Electrical Layout Design Guide

Cable Management: Organizes and routes cables efficiently, reducing clutter. Space Optimization: Maximizes cable capacity while minimizing tray size. Easy Maintenance: Facilitates cable additions,



How to Manage Cables in Cable Trays: Principles and Methods

Learn how to manage cables in cable trays effectively with our comprehensive guide for cable classification, protection, and installation to ensure electrical system safety and efficiency.

Avoiding Mistakes in Cable Tray Installation

Avoid common cable tray installation mistakes to ensure safe, compliant, and efficient electrical infrastructure.

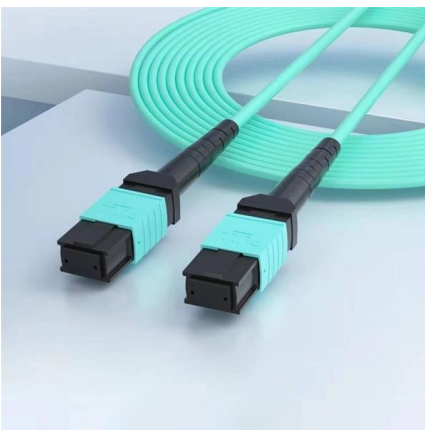


100+ Essential Questions Answered About Cable Trays:

Discover over 100 expert answers about cable trays, covering key topics like material selection, load capacity, installation methods, and maintenance.

Types of Cable Trays - Purpose, Advantages,

Cable trays are components of support systems for power and communications cables and wires. A cable tray system supports and protects



Cable Trays

This is important to ensure that work is done on the right run of cable, or if the cables are inside a conduit, then only the affected cable is de-energized and worked.



Core Principles for Electrical and Instrumentation Cable

In industrial settings, electrical and instrumentation (E&I) cable trays or bridge racks play a critical role in organizing and supporting power, control, and signal cables



How to Fix Common Cable Management Issues using

Discover common cable management problems and how cable tray accessories effectively solve them to ensure safety and performance.

Understanding Cable Pathways, Cable Conduits, Cable

A cable pathway or raceway is a protective channel or enclosure made of materials like metal or plastic, used to manage and safeguard electrical cables and wires. It



The Ultimate Guide to Tray Cables: Types, Applications and

Among the various cable types, tray cables are a preferred solution for robust, adaptable, code-compliant wiring. Whether you're an engineer, contractor, facilities manager or simply curious,



Types of Cable Trays - Purpose, Advantages,

Cable tray is alternatives to wire ways and electrical conduits, which completely enclose cables. Study types of cable trays, purpose, advantages.

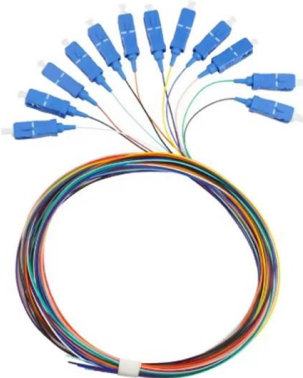
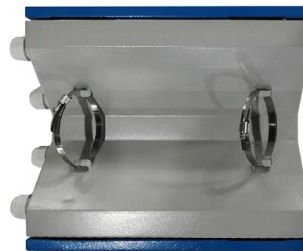


What is Cable Tray and How it is used in Industrial

A design engineer specifies a type of cable tray that suits the project, cable specification depends upon the industrial environment or situation where it

100+ Essential Questions Answered About Cable Trays:

Cable trays, as an important component of modern building electrical systems, play a crucial role in supporting and protecting cable lines, ensuring



Cable Tray Systems: A Complete Guide to Types

A cable tray system is a unit assembly of sections and fittings that forms a rigid structural system used to securely fasten or support cables and



Cable Tray Technical Guide A practical guide to product selection and

Cable tray is considered to be a system. It must provide continuous support for cables, and the electrical continuity of the cable tray system must be maintained.



Cable Tray Questions , Cable Tray Institute

Question 6: It appears that the NEC doesn't address the maximum allowable fill area for a solid bottom, channel cable tray. It does however, address ventilated channel cable tray (Article 318-9 (e)).

What Are Cable Trays and How Do They Work?

A cable tray is an organized support structure designed to secure and route these insulated electrical cables. It acts as a dedicated pathway for power distribution and data transmission, often supporting



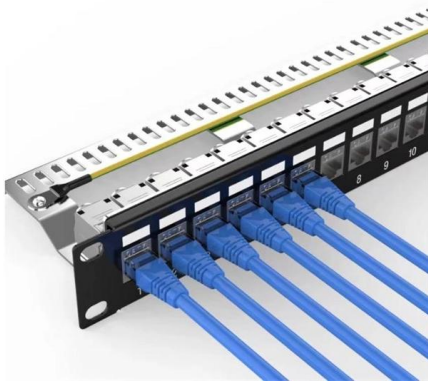
Best Practices for Installing Cables in Trays

Quick Installation Checklist (Key Steps) Cable tray cable installation generally follows these steps: Inspect cables before installation Prepare and



Everything You Need to Know About Cable Trays , Cable Trays

Discover the different types of cable trays, their many benefits when used in electrical wiring and network cabling, installation processes, and essential maintenance tips for keeping your



Cable tray

Combustible cable jackets may catch on fire and cable fires can thus spread along a cable tray within a structure. This is easily prevented through the use of fire

Cable Tray Questions , Cable Tray Institute

Answer: Yes; cables are tied down in cable trays to keep the cables in the cable tray, to maintain spacing between cables, or to segregate or confine certain types of cables to specific locations.



Installation Of Cable In Cable Trays: NEC, Safety

Why Understanding Installation of Cable in Cable Trays Is Important The use of ladder-type trays as raceways for insulated cables is becoming more prevalent.

Cable Trays and Their Uses: Definition,



Types, and

Cable Trays Definition A cable tray is a structural system used to support insulated electrical cables used for power distribution, communication, and control. It



Cable Trays

Cable trays distribute bundles of electrical cables from power supplies to electrical equipment and components throughout the plant. Cable tray systems consist of insulated electrical cables layered

Contact Us

For datasheets, pricing, or custom high-speed optical interconnect solutions, please visit:
<https://www.syropy.com.pl>