

Which type of metal cable tray is better





Overview

Each tray type has specific advantages, limitations, and ideal applications: Ladder trays - best for heavy power cables and long runs where airflow is essential. There are several types of cable trays, including ladder, perforated, solid bottom, basket, and channel trays. From an engineering standpoint, most installations fall into one of the following categories: Each type is not "better" or "worse" in isolation—it is optimized for a. Selecting the right tray helps improve safety, heat dissipation, cable life, and ease of maintenance across industrial and commercial projects.



Which type of metal cable tray is better



Which Steel Cable Tray Type is Best? A Look at

Explore perforated, ladder, wire mesh & flexible steel cable trays. Find the best tray for ventilation, strength & cable protection.

What Are The Common Types of Cable Trays

Discover the main types of cable trays, their uses, and how to choose the best one for your electrical or data cabling project in the UK.

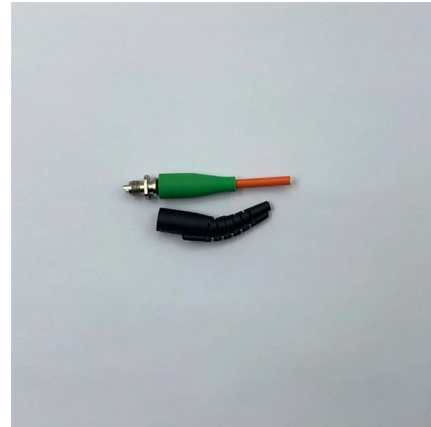


7 Types of Cable Trays: How to Choose the Right One

Selecting the correct cable tray type is not arbitrary--it depends on a combination of cable characteristics, environmental conditions, and installation

Cable Tray Types and Sizes

Choosing the right cable tray type is essential and is usually specified by an engineer or project designer. The selection depends on several factors such as the number



Selecting the right materials for cable tray use at high temperatures

Selecting the right materials for cable tray use at high temperatures From the blistering heat of the Mojave Desert to the sweltering temperatures of foundries, cables need to be supported to ensure



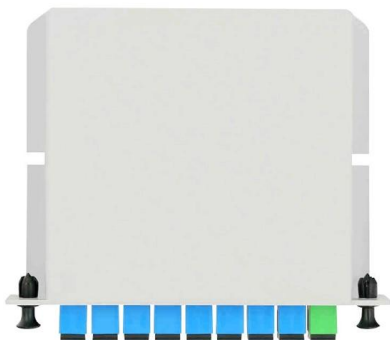
How to Choose the Right Steel Cable Tray for Your IT

Steel cable trays are essential in organizing & protecting electrical & IT cables. This guide helps you choose the right tray for your needs.



Types of Cable Trays - Purpose, Advantages,

Cable tray is alternatives to wire ways and electrical conduits, which completely enclose cables. Study types of cable trays, purpose, advantages.



Types of Cable Trays & Installation Guide



Cable trays are crucial in cable management, providing organized electrical and communication wiring pathways. They are available in various materials and configurations to suit industrial, commercial,



Types of Cable Trays: Benefits and Uses

Different types of cable trays offer key benefits, optimizing cable management and enhancing efficiency in electrical systems.

The Ultimate Guide to Cable Tray Types: Choosing the

Explore the essential guide to cable tray types. Compare ladder, perforated, and wire mesh systems to ensure safety, durability, and efficiency for



Types of Cable Trays - Advantages, Applications and Sizes

Each type of cable tray serves a specific purpose and is tailored to meet varying requirements. In this article, we'll explore the most common types of cable trays, their advantages,



Cable Tray Systems Explained: The Right Solution for

Discover cable tray systems, including tray types, sizes, duty ratings and materials, and learn how to choose the right solution for safe cable management.



7 Types of Cable Trays: How to Choose the Right One

Cable tray systems are engineered support structures designed to route, support, and protect insulated electrical cables used for power distribution,

Ultimate Guide to Choose the Right Metal Cable Tray

Each of the four main types of metal cable trays--ladder trays, perforated trays, solid-bottom trays, and trough trays--has unique advantages



Comparing Electrical Cable Tray Materials- Aluminium,

While aluminium and plastic cable trays serve specific needs, steel cable trays remain the superior choice for most applications due to their



Ultimate Guide to Cable Tray Selection - Types,

Learn how to choose the best cable tray system for your needs. Explore types, materials, installation tips, and NEC compliance in this expert guide.



Best 12/3 Tray Cable Options for Industrial Installations

Choosing the right 12/3 tray cable is essential for safe, compliant power distribution in commercial, industrial, and multi-residential settings. This guide reviews five top MC and related 12/3



Types of Cable Trays: Ladder, Perforated, Basket, Solid

Explore all types of cable trays--ladder, perforated, basket, solid, and channel. Learn their uses, materials, pros, cons, and key differences.



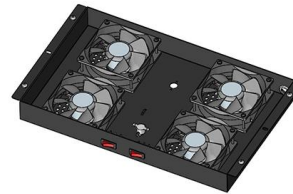
Cable Tray Technical Guide A practical guide to product selection and

SOLID-BOTTOM CABLE TRAY Providing additional cable protection, solid-bottom cable tray is sometimes preferred to support and protect numerous small instrumentation and control cables.



Top 7 Types of Cable Trays and Their Applications

Selecting the right tray helps improve safety, heat dissipation, cable life, and ease of maintenance across industrial and commercial projects. Below



Types of Cable Trays - Purpose, Advantages,

Cable tray systems are alternatives to wire ways and electrical conduit, which completely enclose cables. Cable trays are capable of supporting all types of

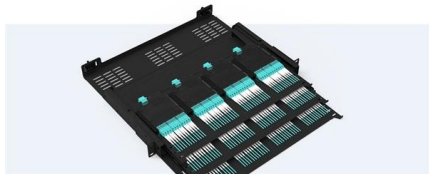
Types of Cable Trays: Ladder, Perforated, Basket, Solid

Cable trays support insulated electrical cables in industrial and commercial settings. There are several types of cable trays, including ladder,



Pre-Terminated Patch Panel

- Standard 19" width
- Max 144 fibers in 1U
- Ultra-High Density Ready



Dust-salt, easy install & maintain



Lightweight ABS 400 Lexanite



Premium sheet metal with multi coating

Types of Cable Trays and Their Benefits

Understanding the types of cable tray systems is critical in determining the correct type for your needs. In this manual we will cover what is a



Contact Us

For datasheets, pricing, or custom high-speed optical interconnect solutions, please visit:

<https://www.syropy.com.pl>