

Which segment of the fiber optic switch uses 1510





Overview

Cisco CWDM GBIC 1510 is a Gigabit interface converter working at 1510nm wavelength, these blue colored GBIC are used on the slots or ports of Cisco equipment, linking these ports or slots to fiber optic network. The OBD 1510 E is a matched pair of compact Ethernet switches designed to extend the reach of 1GbE signals over long distances. Will the data transmission work?

06-22-2016 11:32 PM I can not fully understand what you are talking about. In practice, network designers often prefer 1310 nm for moderate distances and 1550 nm (or even C-band around 1530–1565 nm) for long-haul or wavelength-division multiplexed (WDM) systems. While 850/1310/1550 nm dominate, there are other interesting wavelength regimes (some niche, some).



Which segment of the fiber optic switch uses 1510



Fiber Optic Cable Buying Guide , Eaton

Fiber Optic Cable Buying Guide Choosing single-mode or multimode fiber for high-performance data networking and telecommunications Fast data transmission,

OET 1510-R4

The module functions as a 3 port Ethernet switch with 2 standard RJ45 electrical Ethernet ports and two fiber Ethernet ports using LC optical connections. Note a separate RX and TX fiber link is needed



Cwdm-sfp10g-1510-80-c Datasheet

This Cisco® CWDM-SFP10G-1510-80 compatible SFP+ transceiver provides 10GBase-CWDM throughput up to 80km over single-mode fiber (SMF) using a wavelength of 1510nm via an LC

Connector and Cable Specifications

The Catalyst 3750G-16TD switch uses XENPAK modules for 10-Gigabit fiber-optic connections to networks. See the Catalyst 3750 release notes for a list of supported XENPAK modules.

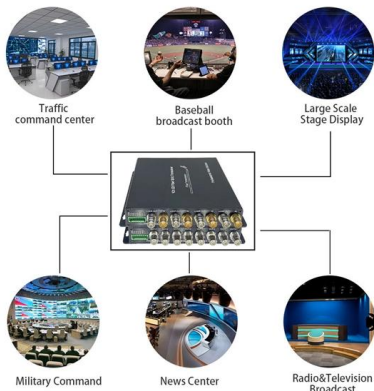


Ethernet to Fiber Bidirectional Transceiver / Switch (Pair)

Product Description The OBD 1510 E is a matched pair of compact Ethernet switches designed to extend the reach of electrical Ethernet signals over long distances. The two switches are

Single vs Dual Fiber Media Converters (2025): A/B

Understand single-fiber (BiDi) vs dual-fiber, A/B wavelength pairing (1310/1550), copper-to-fiber use cases, LED meanings, and cross-brand



Insertion Loss Troubleshooting Tip: Singlemode 1310nm

In Singlemode cable assembly, the 2 wavelengths used for Insertion Loss testing are 1310nm & 1550nm. Read the differences between 1310 vs 1550

OET1510-rev8 dd



The OET 1510 is a compact 3 port Ethernet switch, designed to extend the reach of electrical Ethernet signals over long distances using a constant (fixed) high speed 1 Gbit optical transceiver speed.



Fiber Optic Switches and Their Uses

Fiber Optic Switches and Their Uses Most of us are well aware of the use of fiber optics in local and wide area networks. These networks can be small, spanning relatively short distances (LANs) such

Cisco CWDM-SFP-1510 CWDM SFP 1Gbps 80 km SMF DDM 1510nm

The CWDM-SFP-1510 transceiver operates at 1510nm wavelength. A Cisco CWDM SFP is a hot-swappable input/output device that plugs into an SFP port or slot of a Cisco switch or router, linking



Fiberdyne Labs, Inc. Cisco® Compatible CWDM SFPs, 1510nm

Fiberdyne Labs' Cisco® Compatible CWDM SFPs, 1510nm. Cisco® Compatible CWDM SFPs, 1510nm Back to SFP Page Specifications: Technical Data Sheet



Choice of Wavelength for RF over Fiber - 1310nm vs

Since RF over fiber is inherently mono-directional, using a single fiber for a bi-directional link requires the use of more than one wavelength. In this scenario the



Cisco CWDM-SFP-1510 Glasfaser SFP Modul , 1000BASE-CWDM

The Cisco CWDM-SFP-1510 Compatible 1000BASE-CWDM SFP transceiver supports up to 80km link lengths over single-mode fiber (SMF) via an LC duplex connector. Each SFP transceiver module is

Installing 10 Gigabit SFP transceivers & fiber optic links between

This is a simple video showing how to install a 850nm fiber optic link using SFP transceivers between 2 10 Gigabit backbone switches. Covers transceiver installation, switch setup and link



Network+ v2

It supports longer transmission distances than multi-mode fiber optic cabling, and it's also more expensive. Single-mode cabling also has a central core that's much



Transceiver and Fiber Cable wavelength Mismatch, will

Single-mode transceiver can only work with single-mode fiber cables, and multimode transceiver with multimode fibers. Therefore, you must first figure

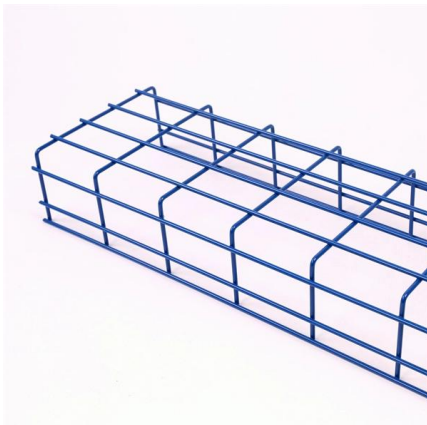


CWDM GBIC 1510,CWDM-GBIC-1510=

Cisco CWDM GBIC 1510 is a Gigabit interface converter working at 1510nm wavelength, these blue colored GBIC are used on the slots or ports of Cisco equipment, linking these ports or slots to fiber

SFP Wavelength Guide: 850nm vs. 1310nm vs. 1550nm

SFP wavelength refers to the nominal center wavelength of the laser transmitter inside a Small Form-factor Pluggable (SFP) optical transceiver. It



Ethernet to Fiber Transceiver (Switch) (OET 1510)

Product Description The OET 1510 is a compact 3 port Ethernet switch, designed to extend the reach of electrical Ethernet signals over long distances using a constant (fixed) high



LYNX Yellobrik Bidirectional Fiber to Ethernet Transceiver 10K Pair

OBD 1510 E is a matched pair of compact Ethernet switches designed to extend the reach of electrical Ethernet signals over long distances. The two switches are linked via single bidirectional fiber link

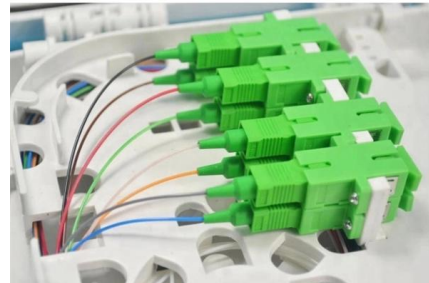


Fiber Optic Ring Network Design Explained: Topologies,

Learn how to design a fiber optic ring network with practical diagrams, topologies, and switch setup tips. Explore ring network switch options for

Understanding Wavelengths In Fiber Optics

Plastic optical fiber (POF) is made from materials that have lower absorption at shorter wavelengths, so red light at 650 nm is commonly used with POF, but at



Lynx OET 1510 , 1G Ethernet / Fiber Optic Transceiver (Singlemode)

The OET 1510 is a compact 3 port Ethernet switch, designed to extend the reach of electrical Ethernet signals over long distances using a constant (fixed) high speed 1 Gbit optical transceiver speed.



OBD 1510 E

The OBD 1510 E is a matched pair of compact Ethernet switches designed to extend the reach of 1GbE signals over long distances. The two switches are linked via

02

High Quality Material



High hardness to resist external impact, Good Shaping Performance, Good Look and Anti-rust



Which Loss Measurement Wavelengths? , Kingfisher

Application note: Which loss measurement wavelengths do I need to test for fiber optic cable and networks.

LYNX TECHNIK AG ODT-1510 Yellobrik Gpi Single Fiber

The Lynx Technik AG ODT-1510 Yellobrik ODT 1510 GPI single fiber transceiver is a fiber optic convertor designed for use in professional broadcast and AV applications. The device allows for the



Lynx Technik AG yellobrik OBD 1510 E Ethernet to 1GB

About Lynx Technik AG OBD 1510 E The OBD 1510 E is a matched pair of compact Ethernet switches designed to extend the reach of electrical Ethernet signals over



Fiber Optic Wavelengths Explained: 850 vs 1310 vs

If the customer uses 1310 nm or 1550 nm or multiple WDM channels, choose a fiber with low attenuation over those bands (for example, low-water



What is difference between 1310nm and 1550nm?

Typically multi-mode glass fibers use light at 850 nm - 1300nm, referred to as "short wavelength" and single-mode fiber operates at 1310, or 1550 nm, called "long



1310nm vs 1550 nm : r/networking

CWDM is typically used for 4 to 18 frequencies over a stand of fiber with wavelengths spread 20 nm apart-- 1270, 1290, 1310, 1330, 1350, 1370, 1390, 1410, 1430, 1450, 1470, 1490, 1510, 1530, 1550,



Contact Us

For datasheets, pricing, or custom high-speed optical interconnect solutions, please visit:
<https://www.syropy.com.pl>