

# **Which quota is used for the grounding bushing of the distribution box**





## Overview

---

26 mm<sup>2</sup> (10 AWG) ground wire must be used, and in all other markets a 6 mm<sup>2</sup> must be used. • Good system grounding provides the path for normal load and fault currents while maintaining load and controls temporary overvoltage. 7 Provide conduit grounding bushings, bonded together and connected to the equipment enclosure on all incoming and outgoing conduits on distribution switchgear and switchboards, distribution panels and on all conduits over 1-1/4" diameter at all panelboards, pull boxes and equipment. This helps to reduce the potential difference that exists between conductive parts and the earth. IN ELECTRICAL STATIONS INCLUDING TRANSMISSION AND DISTRIBUTION SUBSTAT GR THAN 8 FT FROM THE FENCE. THE FENCE SHALL BE GROUNDED SEPARATELY FROM THE GRID UNLESS OTHERWISE NOTED ON THE A PROPRIATE PROJECT DRAWING. The A/E shall include details on the drawings, and edit details as necessary to comply with project scope and latest codes.



## Which quota is used for the grounding bushing of the distribution b

---

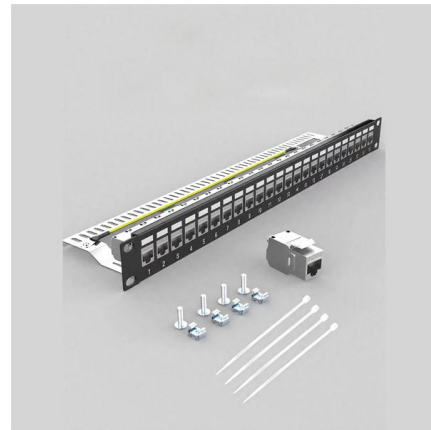


### GROUND GRID SPECIFICATIONS

Multiple voltage Transformers on one unit can have their grounding leads bussed together in convenient runs, i.e., for a breaker with 6 voltage transformers, the 3 on each side can be bussed to a separate

### GROUNDING OF UTILITY AND INDUSTRIAL DISTRIBUTION

Essentially this workshop is broken down into system grounding, protective grounding and surge/noise protection of power and electronics systems normally found in distribution networks.

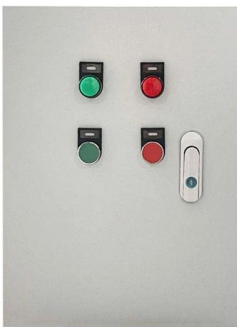


### DISTRIBUTION BOX

Each DISTRIBUTION BOX and controller must be grounded. On the US market, a 5.26 mm<sup>2</sup> (10 AWG) ground wire must be used, and in all other markets a 6 mm<sup>2</sup> must be used.

### Distribution System Grounding

In the United States, typically reactance is used to ground the neutral on the low-voltage side of the delta-wye-connected distribution substation transformers.



### Grounding Bushings & Elbows , Hubbell Power Systems

Grounding bushings and elbows are vital for linemen, ensuring safety by grounding conductors in electrical systems. These components connect grounding wires to

### Distribution Boxes: Types and Functions

Learn what an electrical distribution box (DB/distribution board) is, its main components (MCB/RCCB/RCBO, SPD, busbar) and common types.



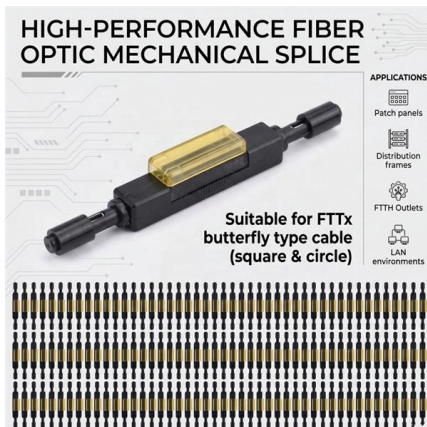
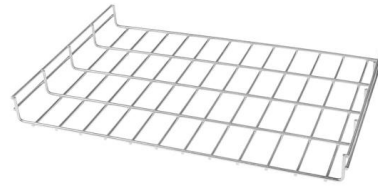
### Grounding in Power Transmission and Distribution Networks

Power transmission and distribution systems are earthed for electric shock and fault protection. This chapter presents the principles and practices of grounding for power systems. An earthed power



## Grounding and UL 508A Standards

Additional rules for the grounding and bonding of industrial control panels include the sizing of ground conductors and the conditions that dictate



## Section 26 05 26 Grounding and Bonding for Electrical Systems

Use insulated No. 6 AWG bonding jumpers to ground cable tray to column-mounted building ground plates (pads) at each end and approximately every 15 M (49 feet).

## Distribution boards components

Distribution boards (generally only one in residential premises) usually include the meter (s) and in some cases (notably where the supply utilities impose a TT earthing system and/or tariff



## Grounding System Installation Standards for Distribution Boxes and

Whether you're a seasoned pro or just starting out, this comprehensive guide will give you practical insights into proper grounding techniques, with a special focus on how selecting quality materials



## Understanding Grounding and Bonding: A Practical

Proper grounding and bonding are fundamental to the safety and functionality of any electrical system. Whether you're a homeowner, an electrician, or an engineer,



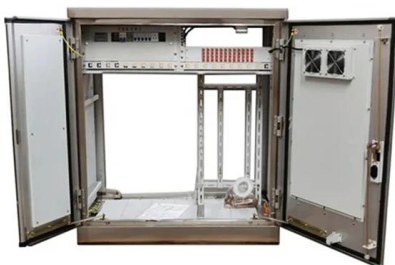
### DISTRIBUTION BOX

Each DISTRIBUTION BOX and controller must be grounded. On the US market, a 5.26 mm<sup>2</sup> (10 AWG) ground wire must be used, and in all other markets a 6 mm<sup>2</sup> must be used.



### Protective grounding requirements for transmission and

Introduction to protective grounding This technical article covers protective grounding requirements for steel tower and wood pole supported



### Ground bushing requirements? , Information by Electrical

I'm going with grounding bushings on the subpanel end only. Feel free to use them but as mentioned they're not required. You could save a few bucks by using the cheap plastic bushings if



## Earthing Arrangement For Distribution Sub-Station , PDF

Upto 25 KVA transformers, meter shall be installed in distribution box. For transformer capacity 63 KVA and above, LTCT-cumm-meter box shall be



## Distribution Boxes Explained: Types, Functions, and

A distribution boxes is an essential device that safely and efficiently distributes electrical power to different areas within a building or facility. It is

## Grounding Practices in Power Distribution Systems

The installation of grounding methods for transmission lines is absolutely necessary in order to guarantee the safety, dependability, and effectiveness of power



## Grounding Bushing âEUR" Conduit Bonding Fitting Explained

A grounding bushing bonds metal conduit to an enclosure's ground bar and is required on service-entrance conduit carrying conductors 4 AWG and larger per code.



### When are grounding bushings required?

I'm trying to get a better grasp on when grounding bushings are required. I've read 250.92 and 250.97. You have to bond any metallic service entrance raceways. 250.92 250 volts or more:



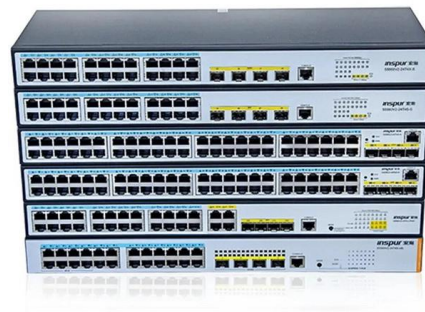
### Distribution Box: Types and Functions , Axis-Electricals

A distribution box ensures that electrical supply is distributed in the building, also known as a distribution board, panel board, breaker panel, or electric panel.



### Grounding Bushings: A Must-Know Guide to NEC Code Compliance

Grounding bushings are essential components in electrical installations, primarily used to ensure proper grounding and bonding of metallic conduit and enclosures. Their proper application is



### GROUNDING AND BONDING FOR ELECTRICAL SYSTEMS

1.7 Provide conduit grounding bushings, bonded together and connected to the equipment enclosure on all incoming and outgoing conduits on distribution switchgear and switchboards, distribution panels



## Grounding Practices in Power Distribution Systems

High-Resistance Grounding (HRG): To provide a safe amount of ground fault current, HRG systems employ a high-resistance grounding resistor. This approach keeps

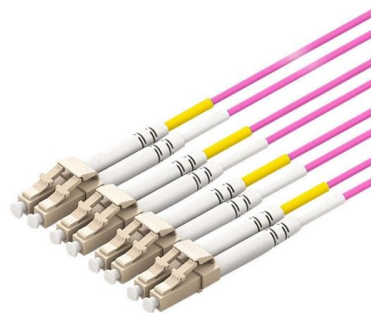


### Size determination, installation method and wiring mode

The distribution box is the central hub of the home circuit and the general control of our daily power consumption. It is an indispensable electrical equipment. If there

## Grounding bushings , Information by Electrical Professionals for

There is no specific requirement for a grounding bushing. It is one method to use when addressing grounding of services (250.92) and circuits over 250v to ground (250.97). Wire size is not



### A Definitive Guide To Distribution Boxes

The distribution box acts as the center of power distribution, distributing electricity to all connected devices. A distribution box, also known as a distribution board, panel board, breaker

## When are grounding/bonding bushings



### required in the NEC?

The video answers the question of when a bonding bushing is required in the National Electrical Code. Download the flowchart here: [more](#)

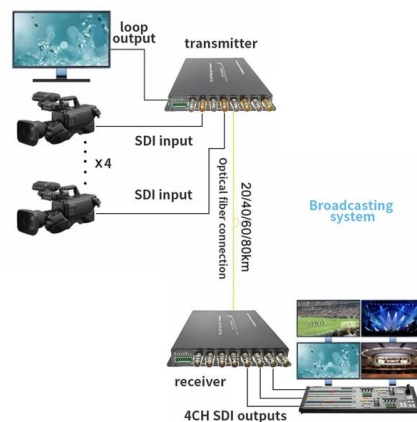


### Taking the mystery out of grounding and bonding

Design considerations A grounding and bonding network can be described as a "tree-shaped" or "star-wired" configuration of insulated copper

### Nine Recommended Practices for Grounding

Use equipment grounding conductors sized equal to the phase conductors to decrease circuit impedance and improve the clearing time of



## Contact Us

For datasheets, pricing, or custom high-speed optical interconnect solutions, please visit: <https://www.syropy.com.pl>