

Which port should a 2-to-16 splitter be plugged into





Overview

Connect Input Cable: Connect the incoming coaxial cable from the wall outlet (or from your ISP's demarcation point) to the 'IN' or 'Input' port of the splitter. When you need to connect multiple wired devices like computers, printers, and IP phones, but only have one Ethernet wall port, using an Ethernet splitter or network switch can expand your connectivity without rewiring. This guide explains your options and helps you choose the best solution for your. The most common splitters deployed in a PON system is a uniform power splitter with a 1:N or 2:N splitter ratio, where N is the number of output ports. A passive RJ45 splitter works by taking advantage of unused wire pairs inside an Ethernet cable. Unused ports should be terminated with 75-ohm terminators to prevent signal reflections and maintain impedance matching.



Which port should a 2-to-16 splitter be plugged into



RJ45 Pinout Splitter Guide: Everything You Need to Know

RJ45 Pinout Splitter Explained Networking enthusiasts often seek ways to optimize connectivity without relying solely on conventional methods. One method gaining

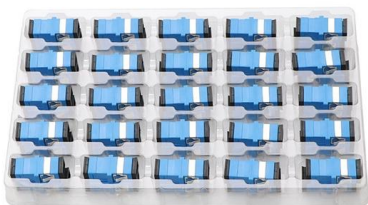
2x16 PLC Fiber Splitter

PLC splitters usually come in various channel configurations, ranging from 1x2 to 1x64 or even higher. Besides, as a passive device, the PLC splitter does not



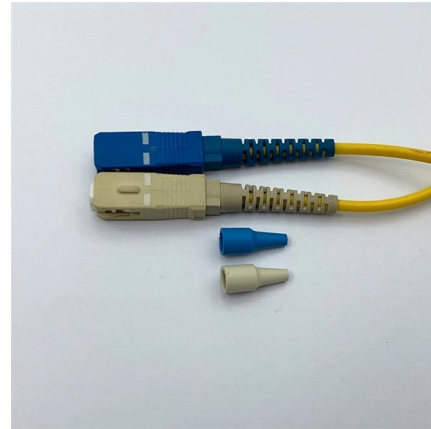
Ethernet Splitter Basics: How It Works & When to Use One

Discover how an Ethernet splitter works, when to use it, and the drawbacks to watch out for. Get tips to choose the best splitter for your network setup.



What Are Ethernet Cable Splitters (and the Best Ones to

Ethernet cable splitters can carry two separate Ethernet signals over a single physical cable. This effectively turns one cable into two, and it can be a



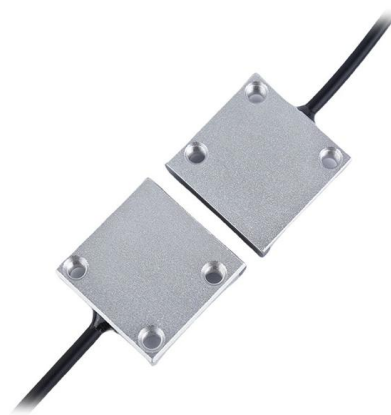
Ethernet Splitter 101: Everything You Need to Know

Everything you need to know about Ethernet splitters, including types, factors to consider when choosing one, and tips for installation and



HDMI Splitter vs. HDMI Switch: Which Should You Buy?

The words "switch" and "splitter" are often used interchangeably, but the devices themselves actually serve opposite purposes. We'll get into more



Two-way Splitters: A Peek Under the Hood

A splitter is a power divider. In the case of a balanced two-way splitter (more on "balanced" in a moment), when a radio frequency (RF) signal is applied to a





Ethernet Cable Splitters -EXPLAINED

Ethernet splitters seem like a cheap and easy way to get more Ethernet ports at the end of an established cabled, but it turns out they're almost never the best solution. Here's why.



How to Connect a TV and Modem to One Cable Outlet

Everything you need to know about using a cable splitter to connect a TV or streaming box and modem to the one coaxial cable outlet.

Where Do I Plug My Audio Splitter? A Guide for Seamless Sound

2. Can I plug my audio splitter into a speaker or amplifier? No, an audio splitter should not be plugged directly into a speaker or amplifier. It is designed to divide the audio signal between



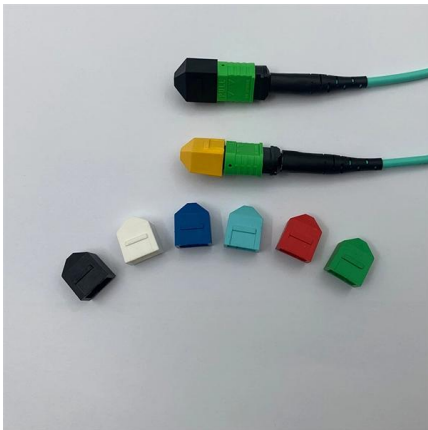
Split Ratios and Splitting Level of Optical Splitters

The most common splitters deployed in a PON system is a uniform power splitter with a 1:N or 2:N splitter ratio, where N is the number of output



How to use a cable splitter for TV and Internet?

Connect Input Cable: Connect the incoming coaxial cable from the wall outlet (or from your ISP's demarcation point) to the 'IN' or 'Input' port of the



How to Connect a Splitter to Another Splitter: A

In this guide, we'll explain how to safely connect a splitter to another splitter, covering both fiber optic and coaxial setups.

How to Split Ethernet to Multiple Devices

If it seems like you're constantly searching for a spare Ethernet port on your router then you may be wondering how to split an Ethernet port. There are a



networking

Trying to use a splitter to turn one connection into two won't work since that's the job of switches/hubs which clearly, a splitter is not either of. If you attempt to use this two turn one



Two-way Splitters: A Peek Under the Hood

Here, RF signals from two sources can be applied to the two input ports (Ports 2 and 3 in Figure 1), and will appear at the single output port (Port 1 in Figure 1). There



The FOA Reference For Fiber Optics

The specifications for a splitter are loss across the device and the variability of that loss for each port. A well made splitter will have low excess loss and low

Ethernet Splitter Basics: How It Works & When to Use One

At the network side (router or switch): You plug the splitter into two open ports. The splitter "combines" those two connections into one physical cable by assigning each to different wire



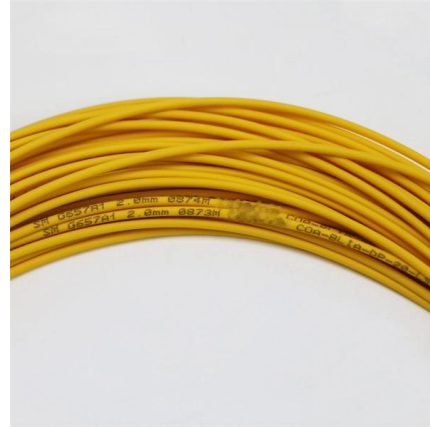
Introduction to Passive Optical Network Splitter Architectures

A fiber broadband provider typically determines and overall split ratio for the network, such as 1x32 or 1x64, and uses combinations of splitters to meet that ratio with each PON port.



Splitter for Ethernet Cable: How to Use & What You Need

Step 1: Plug in your ethernet cable into the ethernet input port on your network switch. Step 2: Plug in the other devices that you want to share the ethernet connection into the other ports

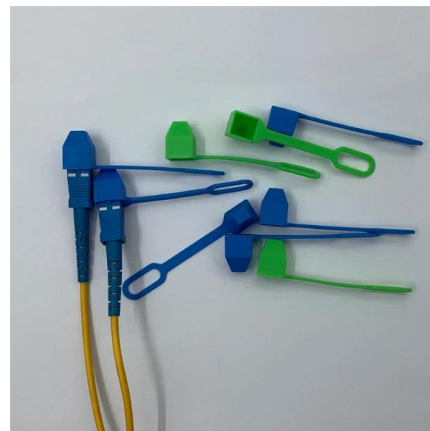


How to Use a Cable Splitter - Step By Step Guide

However, using a cable splitter requires proper understanding to ensure that your cable signal is not weakened. In this guide, we will take you through the step-by-step process of using a

How to Install & Use an Ethernet Splitter Guide -

Find out how you can install and use the Ethernet splitter in the right manner by going through this article till the end.



How Does An Ethernet Splitter Work

How Does an Ethernet Splitter Work? An Ethernet splitter operates by dividing the Ethernet signal coming from a single port into



How to Use a Cable Splitter

If you are willing to buy a cable splitter but don't know much about it, then check this guide to know how to use a cable splitter and how it will help you.

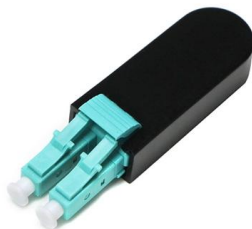


Unlocking the Potential of Your USB Ports: A

How to use a USB splitter A splitter is easy to use. Passive splitters just need to be inserted into your device's USB port and then your peripherals plugged into it. An

The FOA Reference For Fiber Optics

With a 1:n device, in one direction they split the signal into n ports/fibers and into the other end they combine the signals into one port/fiber. Passive optical networks



1x16 Single Mode Fiber Optic Splitters

1x16 Single Mode Fiber Optic Splitters 1310 / 1550 nm Dual-Window Planar Splitters Split Input Evenly into 16 Ports 2.0 mm Narrow Key FC/PC or FC/APC Connectors



Ethernet Splitter vs. Switch: What's the Difference?

Short on Ethernet ports and looking to connect an extra device or two to your wired network setup? You're likely to encounter two options: an Ethernet



ethernet

I found a patch panel that splits off ethernet into multiple hosts as shown below. Can anyone explain how this might work?



How Do USB Splitters Work (Complete Beginners Guide)

A USB splitter is a device that allows more than one USB device to be plugged into a single USB port. It can be used to share a single USB device



Contact Us

For datasheets, pricing, or custom high-speed optical interconnect solutions, please visit:
<https://www.syropy.com.pl>