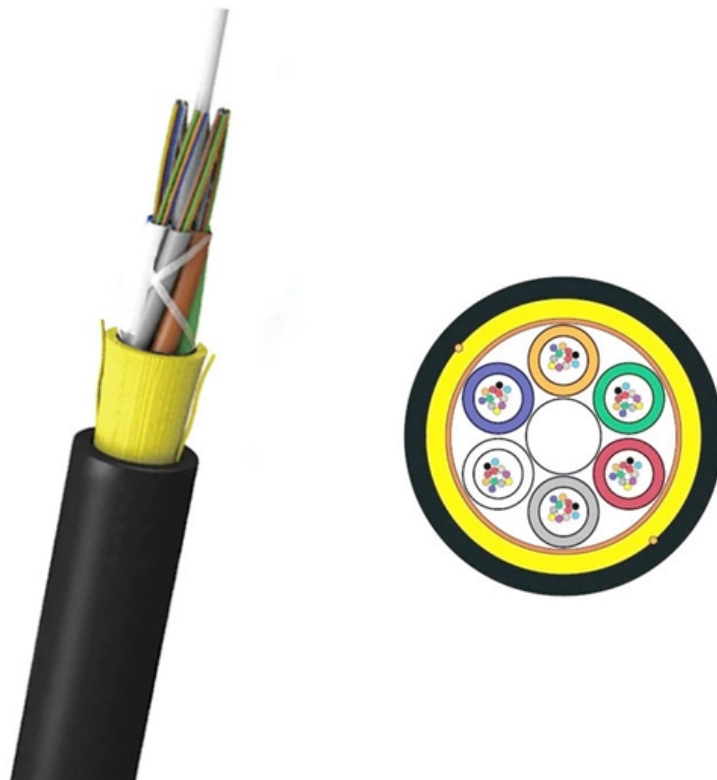


# **Which circuits in the distribution box are most useful**





## Overview

---

A distribution box uses MCBs, RCDs, and busbars to protect circuits, prevent shocks, and ensure safe power distribution in homes and buildings. The building's electrical power enters through the main feeding cable, which connects to the distribution board. A power distribution box (also called PDU or distro) directs electricity from a main source to multiple circuits. It acts like a hub or traffic controller, managing power flow to different areas or devices. Key components include circuit breakers, fuses, bus bars, and internal wiring for safety and.

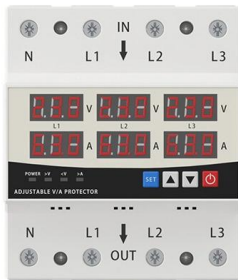


## Which circuits in the distribution box are most useful

### LED DISPLAY PANEL

#### CURRENT STATUS CLEARLY VISIBLE

IT CAN CLEARLY SHOW THE CURRENT STATUS AND VOLTAGE STATUS, WITH EFFICIENT OPERATION AND RAPID RESPONSE.



### The Importance of Distribution Boxes in Electrical Systems

A distribution box is an exposed or concealed metal box that houses the circuit breakers that regulate the distribution of electricity throughout a

### The Complete Guide to Distribution Box: Installation, Types & More

Can I add circuits to an existing distribution box? Circuit additions are possible if the distribution box has adequate capacity and available spaces. However, you must ensure the total

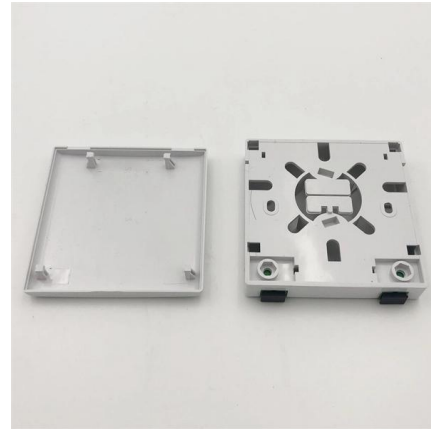


### Explore Power Distribution Box Types and Functions

Power distribution boxes are used in commercial and residential buildings and are part of the electrical system, also known as switchboards.

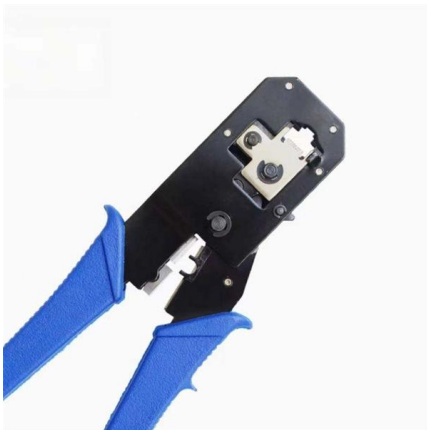
### Comprehensive Understanding of Distribution Box

A distribution box helps manage electricity in homes or workplaces. It makes sure power flows safely and efficiently to devices. Let's look at its main jobs. Power distribution and circuit management The



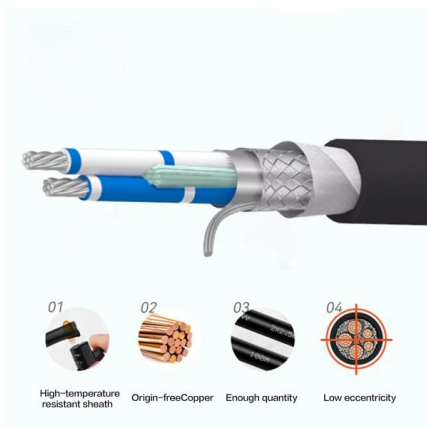
### The Anatomy of a Distribution Box: Key Components

SHARE TO The Anatomy of a Distribution Box: Key Components Explained (MCB, RCD, Busbars)  
A distribution box uses MCBs, RCDs, and



### What is the Function of a Distribution Box in Electrical Systems

The distribution box plays a crucial function in the distribution box of electrical systems. It helps electricity move safely to different circuits, ensuring that power is utilized efficiently. This box protects



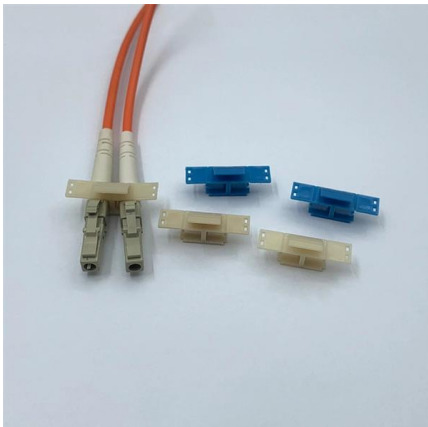
### How Does a Power Distribution Box Work: A Guide

Inside, it houses circuit breakers, busbars, and terminals that collectively control and protect electrical flow. These boxes are vital within



### What Is a Distribution Box?

Some distribution boxes have a longer cord than others. When choosing a distribution box, make sure the cord is long enough to reach the main



### Distribution Box: Key Functions, Components, and

Acting as a central hub, a distribution box receives electricity from the main power source and directs it safely to various circuits and outlets. This

### What is the Function of a Distribution Box in Electrical Systems

Overall, the function of the distribution box is key to maintaining the safety and efficiency of your electrical system. A distribution box helps send electricity safely to different circuits at home. The



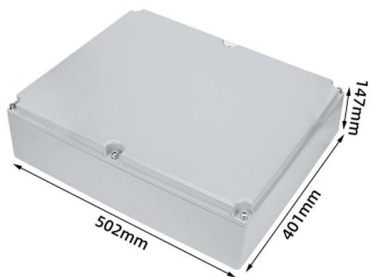
### Understanding Distribution Boxes: A Comprehensive Guide

A distribution box is used to receive electrical power from a main supply and distribute it to multiple branch circuits in a safe and controlled way. It



### Understanding Distribution Boxes: Your Guide to Power Distribution

A: A junction box is primarily used to connect electrical wires, while a distribution box is designed to distribute power to various circuits. The distribution box typically contains circuit breakers



### Distribution Boxes: Types and Functions

Inside a distribution box are components like circuit breakers, earth leakage units, doorbells, and timers. The building's electrical power enters

### Distribution Boxes Types - The Complete Guide

The power distribution boxes deliver electricity from the main electrical main to other circuits. Several distribution boxes are designed for specific use in



### How Does a Power Distribution Box Work

Learn how a power distribution box works step by step--from incoming power to circuit protection and smart monitoring--for safe, efficient electricity delivery.



### What Is A Distribution Board and How Does It Work? , TOSUNlux

Do you wonder how electric power is distributed in different parts of your home? Well, a distribution board or distribution box helps to do that! As the name goes, it is the load center and



### The installation requirements for the distribution box

A distribution box is the heart of any electrical system. It takes the incoming power and safely distributes it to different circuits throughout your





## A Complete Guide to Distribution Boards

Read this comprehensive buyer's guide on distribution boards, explaining what they are, their uses, types, how to connect distribution boards,



### What is the Internal Structure of The Distribution Box

Terminal boxes are mainly used for connecting electrical terminals to devices or systems, without the protection features of a distribution box. In short,



### Power Distribution Boxes Explained Simply

Circuit breakers, fuses, or other safety devices monitor the flow. If something goes wrong--like an overload or short circuit --they automatically shut off that part of the system to



### Understanding Distribution Boxes: A Comprehensive Guide

A distribution box, also known as a power distribution box or electrical distribution box, is used to distribute electrical power safely to multiple



## Power Distribution Boxes Explained Simply

Learn what a power distribution box is, how it works, key components, types, and why it's vital for safe and efficient electrical systems.



### What does a power distribution box do ?

The main function of the distribution box is to receive power and distribute it to various circuits. It can protect circuits, regulate voltage, and isolate and control

## Distribution Box: Comprehensive Guide on Types, Safety & Technology

Explore the essential functions, types, safety features, and technological advances of distribution boxes for efficient electrical power distribution.



### The Anatomy of a Distribution Box: Key Components

A distribution box uses MCBs, RCDs, and busbars to protect circuits, prevent shocks, and ensure safe power distribution in homes and buildings.



## Contact Us

---

For datasheets, pricing, or custom high-speed optical interconnect solutions,  
please visit:

<https://www.syropy.com.pl>