

# **Which AI server QSFP provider is the best**





## Overview

---

Based on our deployment experience, OSFP is the clear winner for: AI/ML Clusters: GPU interconnects running at full load generate immense heat. Next-Gen Cloud Core: For 800G backbones where backward compatibility is less important than raw performance. Beyond providing the physical hardware, customers have come to expect AI server Original Equipment Manufacturers (OEMs) to offer cooling technology, infrastructure management software, and professional services. In the rapidly evolving landscape of high-performance computing and AI infrastructure, NVIDIA optical transceivers have emerged as critical components for enabling next-generation 800G network deployments. This guide explores key technical features for GPU clusters, examines spine-leaf architectures for distributed AI applications, and evaluates whether QSFP-DD or OSFP is better suited for future AI data centers. However, with multiple form factors—QSFP-DD, QSFP112, and OSFP—each tailored to specific deployment and upgrade needs, choosing the right 400G NIC is no simple task.



## Which AI server QSFP provider is the best

---



### Choosing 400G NICs by Network Interface: OSFP,

Learn how to choose the right 400G adapter for AI, HPC, and cloud data centers based on performance, throughput, and deployment needs.

### 800G Transceivers: QSFP-DD vs OSFP, Which to

Learn the main differences between the two packages of 800G transceivers, QSFP-DD and OSFP, and compare their similarities and differences



### SFP vs SFP+ vs QSFP vs QSFP28 vs QSFP-DD:

Choosing between SFP, SFP+, QSFP, QSFP28, and QSFP-DD is not just a speed decision. Enterprise buyers and architects must compare lane count,

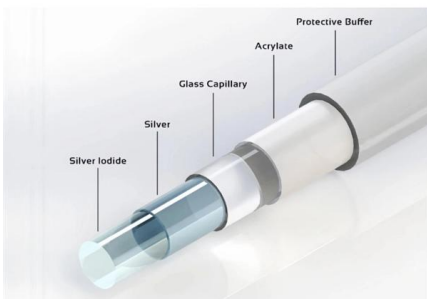


### Understanding SFP, SFP+, QSFP and Beyond:

Discover the differences between SFP, SFP+, and QSFP transceivers, and learn how to select the best solution for your network. Explore their features,



### Product Catalog



### QSFP-DD for AI Data Centers: 400G/800G GPU Interconnect Guide

This guide explores key technical features for GPU clusters, examines spine-leaf architectures for distributed AI applications, and evaluates whether QSFP-DD or OSFP is better

### Optimizing AI Networks: Connecting 400G Ports with

This article explores how to connect 400G ports with backward compatible QSFP-DD modules while leveraging QSFP112 transceivers for AI



### SFP vs SFP+ vs SFP28 vs QSFP: Choosing the Right

SFP/SFP+/SFP28 keep the smallest footprint per lane; QSFP provides higher aggregate bandwidth per cage--fewer cages for the same aggregate throughput

### QSFP 40G and 100G Transceivers Face



## Unexpected Demand Surge from AI

The rapid expansion of artificial intelligence (AI) infrastructure, including large-scale model training and inference clusters, is driving an unprecedented surge in demand for 40G and

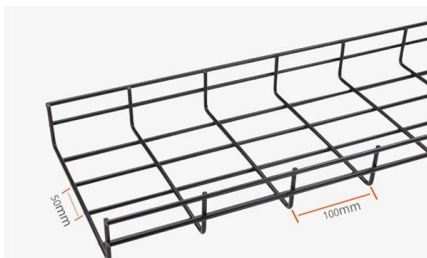
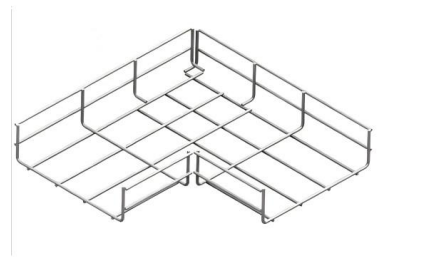


## Optimizing AI Networks: Connecting 400G Ports with Backward

Optimizing AI Networks: Connecting 400G Ports with Backward-Compatible QSFP-DD Modules and QSFP112 for AI Servers As AI-driven data centers and high-performance computing (HPC)

## SFP vs QSFP: Choosing the Right Optical Transceiver for Your Data

Discover the key differences between SFP and QSFP modules. Learn which optical transceiver is best suited for your data center, whether you're looking for cost-effective SFP solutions



## 21+ Top Cloud Service Providers Globally In 2026

21+ Top Cloud Service Providers Globally In 2026 AWS, Azure, and Google Cloud control 63% of worldwide cloud infrastructure. Here are the other



## Top AI Server Companies & How to Compare Them (2025)

With numerous vendors vying for dominance, choosing the right AI server can be daunting. Understanding the key players and evaluation criteria is essential for making informed decisions.



## QSFP28 Transceiver: Complete 100G Connectivity Guide (2026)

QSFP28 transceiver guide covering module types, pricing, compatibility, and deployment. Learn how to choose, deploy, and troubleshoot 100G QSFP28 optics.

## What is QSFP? A Complete Guide 2025

this blog explore what QSFP is, its different variants, how it works, and why it's a game-changer for high-speed network environments.



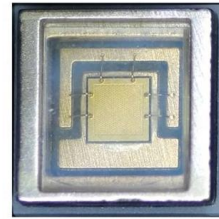
## NVIDIA Optical Transceivers: QSFP-DD/OSFP 800G

Complete guide to NVIDIA optical transceivers covering QSFP-DD and OSFP form factors for 800G networks. Learn about compatibility, deployment



**BRKOPT-2699**

In an air-cooled system, the best way to cool anything is to increase the heat sink fin area. QSFP-DD is innovation friendly: yields constant improvements to cage design, faceplate design, heatsink design,



### OSFP vs QSFP-DD vs SFP-DD: The Ultimate

Confused by 800G form factors? We compare OSFP vs QSFP-DD vs SFP-DD based on Thermal Capacity (15W+), Backward Compatibility, and AI Cluster use cases.

### FS 400G QSFP-DD: Complete Guide and Solutions

The demand for 400G Data Center Interconnects (DCIs) has prompted cloud service providers and data centers to explore innovative solutions

#### DETAILS DISPLAY

Focus On Every Detail



01

Neat & Clean Layout

Cleaner arrangement of components. Easy to operate



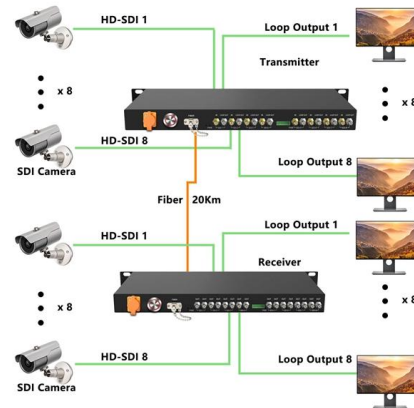
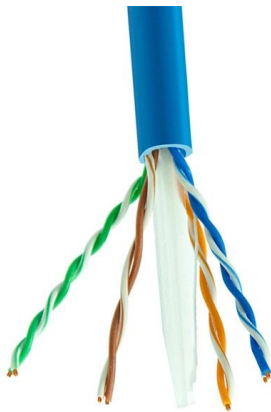
### QSFP-DD vs OSFP vs QSFP112: Which 400G Module

400G optical module packaging comparison: Choose QSFP-DD, OSFP, or QSFP112 for data center, AI, or HPC based on compatibility, power, and cost. Optimize



## QSFP-DD for AI Data Centers: 400G/800G GPU Interconnect Guide

Learn how QSFP-DD optical transceivers enable AI data centers with 400G/800G bandwidth. Compare modules, architectures, and deployment strategies for GPU clusters.

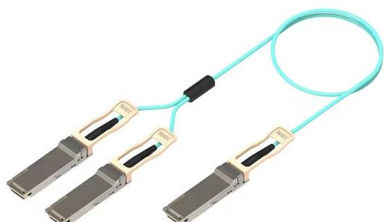


## Top Five AI Server Companies for Data Centers and

This ABI Research competitive assessment ranks the top five AI server companies worldwide.

## SFP vs QSFP: Key Differences and How to Choose for

Learn the differences in speed, lanes, density, cost, and use cases. Includes tables, FAQs, and guidance on choosing SFP or QSFP for servers, AI,



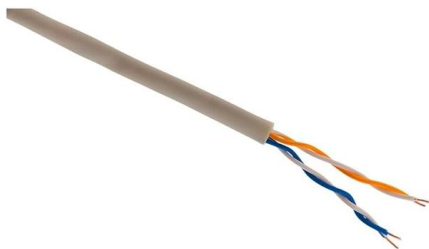
## 7 Best AI cloud providers for full-stack AI/ML apps

Compare the top AI cloud platforms in 2026 for model deployment, full-stack ML apps, and GPU workloads. See how providers like Northflank, AWS,



## SFP vs. QSFP: Differences, Use Cases, and How to Choose

SFP modules: Best for access, server uplinks, small-scale edge deployments, where simplicity, low power, and ease-of-use are prioritized. QSFP modules: Best for aggregation, spine, and high



## AI Server Companies , Leading Providers & Solutions

Discover top AI server companies offering high-performance infrastructure for machine learning, AI training, and data processing.

## QSFP Cables Explained 2025: Types, DAC vs AOC,

Learn about QSFP cables: QSFP+, QSFP28, QSFP56, QSFP-DD. Compare DAC vs AOC, speeds, lengths, and use cases in data centers. Includes



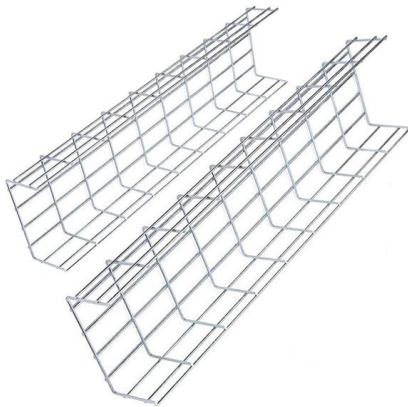
## The Ultimate Guide to Buying 40G QSFP+ Transceivers

Overview: Navigating the purchase of 40G QSFP+ transceivers requires understanding key technical specifications, compatibility factors, and



## Best Cloud AI Developer Services (Transitioning to AI Coding)

Find the top Cloud AI Developer Services with Gartner. Compare and filter by verified product reviews and choose the software that's right for your organization.



## What is the Best AI Inference Provider in 2025?

In 2025, selecting the best AI inference provider is crucial for achieving low-latency, cost-effective AI deployments. This comprehensive guide compares

## Contact Us

---

For datasheets, pricing, or custom high-speed optical interconnect solutions, please visit:  
<https://www.syropy.com.pl>