

What to do if the PDA optical power meter is missing





What to do if the PDA optical power meter is missing



How to Check and Calibrate Optical Power Meter?

Be sure the meter is properly connected to a light source and the settings are correct. If you still experience faults clean the detector and connectors of all dirt or pollution. Also, maybe bring

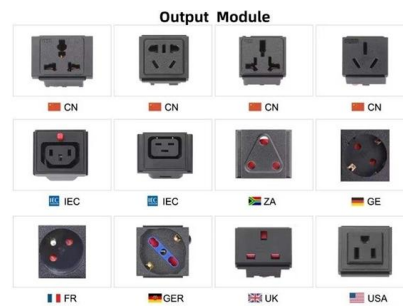


Waters 2998 Photodiode Array Detector Operator s Guide

Requirement: To meet the regulatory requirements of immunity from external electrical disturbances that can affect the performance of this instrument, do not use cables longer than 3 meters (9.8 feet) when

(PDA) Basic Points to be Checked When a Problem Oc , FAQ

Confirm that the power is supplied to the instrument at every necessary location. If any power cannot be turned ON, check the switchboard supplying the power to the system.



Why Choose Us

- 20 Years of OEM/ODM**: 20 Years factory manufacturing experience.
- Professional R & D team**: 10-years appearance/rebuild/ electronic engineer.
- Fully Certified**: Our are certified CE,UL,ETV, ISO9001,IAF15184& etc.
- Timely Delivery**: 22 production lines, 5000+ employees, timely delivery guaranteed.
- Quality Assurance**: Professional QC team with full process inspection.
- After-sales service**: After Sales Service for Customer Satisfaction.

Beginner's Guide to Power Meter Usage for Optical

Use a power meter for fiber optic testing by cleaning connectors, setting wavelength, calibrating, and following step-by-step procedures for



Operation, Maintenance & Calibration of Optical Power Meters

Learn how to operate, maintain, and calibrate GAO Tek's Optical Power Meters with detailed guidelines for accurate fiber optic measurements.



PMT-900 Series FTTH PDA-PON Tester, Optical Power

In order to complete the speed measurement service of 2000Mbps, Grandway has launched the PMT-900 Series PDA, which has dual 2.5G Ethernet ports,



Various specifications optional



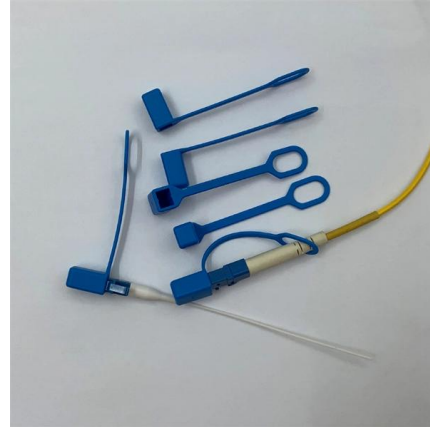
Optical Power Meters

An Optical Power Meter is a device known to feature a calibrated sensor that helps in measuring the display and an amplifier.



Waters Corporation

Hier sollte eine Beschreibung angezeigt werden, diese Seite lässt dies jedoch nicht zu.



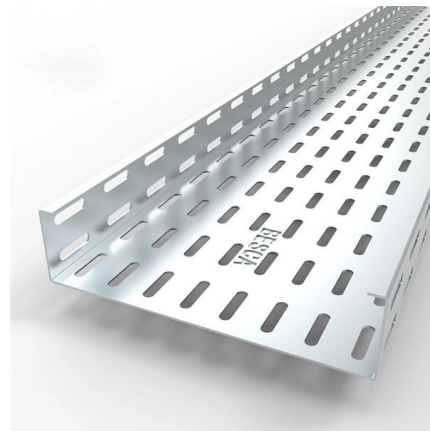
application note 015 Calibration of optical power meters

This application note demystifies how EXFO's IQS-12002 Optical Calibration System can guide you through the calibration of power meters, covering issues such as traceability and technical



PDA-7000

The PDA-7000 is high performance optical emission spectrometers, utilizing the PDA method as standard, which enhances the accuracy and



PDA-7000

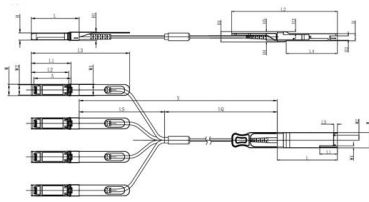
This page is Specs of PDA-7000. The instrument highly resistant to dust and other environmental factors. However, avoid installing the data processing unit in an





Reviving Your Dead Optical Power Meter: Step-by-Step Repair Guide

Don't worry; we've got you covered! In this video, we'll walk you through the process of resurrecting your dead optical power meter step by step .more



Unit mm

OSFP28	L	L1	L2	L3	L4	W	W1	W2	H	H1	H2	H3	H4	H5	H6
Max	72.2	-	128	4.35	61.4	18.45	-	6.2	8.6	12.4	5.35	2.5	1.6	2.0	-
Type	72.0	-	4.20	61.2	18.35	-	8.5	12.2	5.2	2.3	1.5	1.8	6.55	-	-
Min	68.8	16.5	124	4.05	61.0	18.25	2.2	5.8	8.4	12.0	5.05	2.1	1.3	1.6	-

SFP28	L	L1	L2	L3	W	W1	W2	H	H1	A
Max	57.6	47.7	44.55	119.9	13.8	14.0	12.3	8.7	10.3	45.35
Type	57.4	47.5	44.35	117.9	13.55	13.8	12.1	8.5	10.1	45
Min	57.2	47.3	44.15	115.9	13.3	13.6	11.9	8.4	9.9	44.65

Crackhead/pass.txt at master · moimikey/Crackhead ·

How to create a web form cracker in under 15 minutes. - moimikey/Crackhead

Optical Power Meter User Manual

On the optical power meter interface, short press the "?" key to switch the measurement wavelength. You can choose 7 different test wavelengths, 850nm/980nm/1300nm/1310nm/1490nm/1550nm,



Optical Power Meter : Everything You Need to Know

The Optical power meter is the standard tester in a typical fiber optic craftsman's toolkit. It is an invaluable tool during installation and restoration. The

Instruction Manual Shimadzu PDA 7000



211-78001E Jun. 2018 SHIMADZU OPTICAL
EMISSION SPECTROMETER PDA-7000
INSTRUCTION MANUAL Read the instruction
manual thoroughly before



User's AQ2180 Manual Optical Power Meter User's Ma

The AQ2180 series are full featured palm sized and lightweight optical power meters designed for use with an optical Light source to perform optical loss measurements on optical fiber cables.

OPM (Optical Power Meter)

The Optical Power Meter is small, light and easy to carry large LCD screen. It can be widely used in the test of LAN, WAN metropolitan network. It can be used to test Fiber loss accurately, to



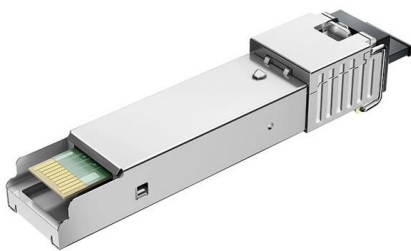
Optical Power Meter Not Showing Power? , Photodiode Working

In this video, we explain how to repair an Optical Power Meter that powers ON but does NOT show any optical power reading. more



Optical Power Meter Not Showing Power? , Photodiode Working

In this video, we explain how to repair an Optical Power Meter that powers ON but does NOT show any optical power reading. You will learn: o How an Optical Pow



SHIMADZU OPTICAL EMISSION SPECTROMETER PDA-7000

The emission analysis is a method to carry out a quantitative analysis of elements contained in a sample, by generating the optical emission by giving the sample electric and thermal energy, and

PDA-MF Series

Easily Explore Unknown Materials A totally new direct-reading spectrometer, the PDA-MFTM series, based on the technologies accumulated by Shimadzu over 140 years, inherits the high performance



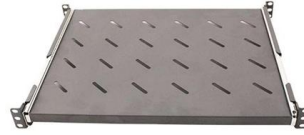
Optical Power Meter User Guide

Damage to Item Hazard Do not leave item in direct sunlight or near heat sources, submerge in water, or subject unit to strong impact. Cover the fiber interface with the flip-cap when not in use. Do not throw



THORLABS PDA200C Operation Manual

This document provides detailed instructions on using the device as a photodiode amplifier and optical power meter, including calibration, bias voltage settings, and analog output.

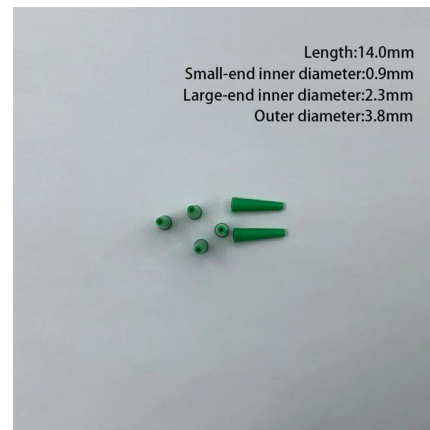


Shimadzu Optical Emission Spectrometer PDA-7000 Series

PDA-7000Series For many years, Shimadzu has supplied the world with the Optical Emission Spectrometer instruments that are indispensable for the quality control of metals.

PDA

PDA Optical Emission Spectroscopy High-precision, stable measurement is achieved by using a cutting-edge optical design that includes a high-resolution



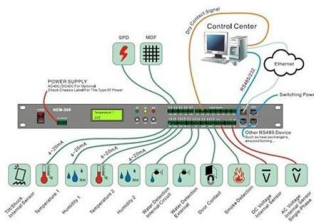
b.book

Power off the solvent delivery system or pump to avoid exposure to chemicals. Caution: To avoid the possibility of leaking mobile phase, do not disconnect the inlet or outlet fluidic lines while there is

PDA-IV



Iris Power PDA-IV provides a simple method for online partial discharge monitoring of stator winding insulation in hydro generators



Polarization-Maintaining Single Mode Optical Fiber

Thorlabs offers both PANDA and Bow-Tie Single Mode Polarization-Maintaining (PM) fiber. These two fibers are named based on the stress rods used. Stress rods run

Contact Us

For datasheets, pricing, or custom high-speed optical interconnect solutions, please visit:
<https://www.syropy.com.pl>