

What standard does the core switch meet





Overview

Compliance with Ethernet Protocols: Since the Ethernet networks are built over IEEE standards. Engineered to aggregate massive volumes of data from distribution switches, it provides ultra-low latency and maximum throughput to ensure uninterrupted routing and packet. A core switch is the primary switch installed at the backbone of a layered or hierarchical network. For core switches, if you want to achieve full-duplex non-blocking, you must meet the minimum standard requirements (backplane bandwidth = port number port rate 2), the higher the backplane bandwidth, the faster the data exchange, the core switch The stronger the data processing capability.



What standard does the core switch meet



What Is a Core Switch? Network Backbone Architecture Guide

This guide breaks down exactly what a core switch does, how it fits into the three-tier network model, and the exact device-count thresholds that dictate when your business actually

Core Switch vs Normal Switch: Key Differences Explained

What are the Differences Between the Core Switch and Normal Switch? By fiberlife. Posted on January 17, 2025 Networking infrastructures rely



Which Layer Is the Core Switch Really In? 2026 L2 vs

To enable traffic, you must establish a core switch in the physical core layer. The core switch plays the leading role and supports other switches.

What is a Core Switch?

What is a Core Switch? A Deep Dive A core switch is the backbone of a network, providing high-speed switching for data packets between different network segments; essentially, it's



What Is a Core Switch? Network Backbone Architecture Guide

Discover what a core switch does in a 3-tier network model. Learn about ASIC routing, collapsed core vs dedicated core topologies, and SMB sizing guides.

What Is a Core Switch in a Network?

Define the core switch--the central, high-speed backbone required for aggregating and routing massive volumes of enterprise network traffic.



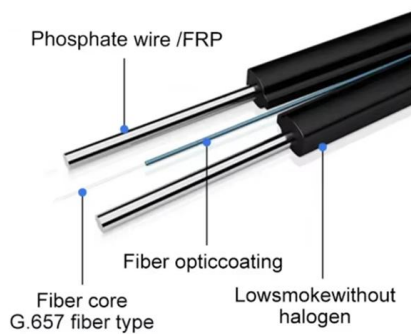
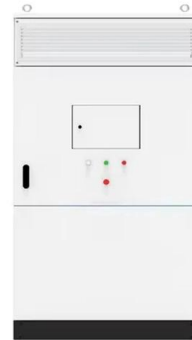
What Is a Core Switch?

Unlike access or distribution switches, a core switch is optimized for Layer 3 performance, modular scalability, and redundancy. In smaller networks, it may be combined with the distribution layer in a



Core Switch vs. Distribution Switch vs. Access Switch

A core switch is the primary switch installed at the backbone of a layered or hierarchical network. These data switches are responsible for routing and data

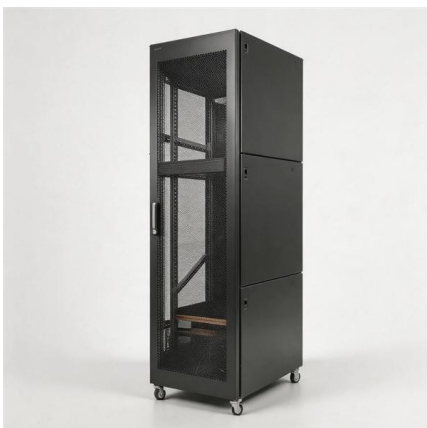


What Is Core Switch?

A core switch is the high-capacity networking switch that forms the backbone of a network, directing data traffic between different network segments and ensuring efficient

How to Choose the Right Core Switch for Enterprise

Learn how core switches for enterprise networks and LAN campus networks function in the hierarchical internetworking model and how to choose



Core Switches and Normal Switches: A Practical

In modern network infrastructure, switches play a pivotal role in connecting devices and facilitating data transfer. However, not all switches are



What Is the Core Switch?

The core switch is the central, high-capacity switching point within a network, responsible for forwarding data between different parts of the network and often connecting to multiple

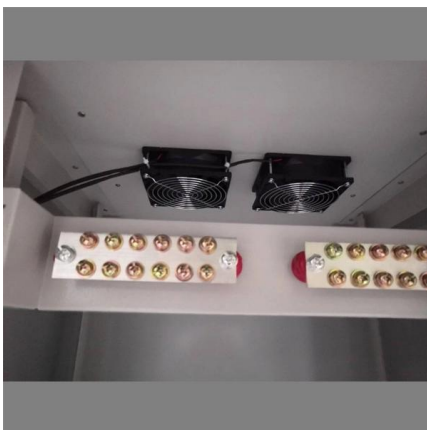


What Is a Core Switch?

A core switch is the backbone of a large-scale network, designed to handle massive volumes of traffic with ultra-low latency and maximum reliability. Sitting at the top of the hierarchical model, core

Core switch definition - Glossary , NordVPN

A core switch is the primary switch in a network, built to transfer data fast. A core switch sits at the top of a network's structure.



Core Switch vs. Distribution Switch vs. Access Switch

Core Switch vs. Distribution Switch vs. Access Switch: Understand Their Roles in Ethernet Networks Ethernet networks are growing and becoming more complex,



What is a Core Switch , Functions and Difference over Normal Switch

It is a powerful backbone switch in the center of the network core layer, which centralizes multiple aggregation switches to the core and implements LAN routing.



Atlantic International University

Hier sollte eine Beschreibung angezeigt werden, diese Seite lässt dies jedoch nicht zu.

Understanding the Core Switch: Key Differences and Uses

A core switch differs from a standard switch in the volume of data it can handle and bandwidth, as well as in its routing and QoS capabilities, which



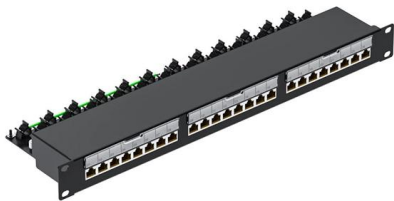
What Is a Core Switch in Networking?

What Is a Core Switch in Networking?
Understanding the Backbone of Your Network A core switch in networking serves as the high-capacity



Core Switches: The Pillar of Network Infrastructure

Get a closer look at core switches: the nerve centers of network infrastructure that enhance performance and facilitate growth.



What is a Core Switch?

Spread the loveA core switch is a crucial component of a network infrastructure that serves as the backbone of a network. It's a high-performance switch that provides

FS Community

Hier sollte eine Beschreibung angezeigt werden, diese Seite lässt dies jedoch nicht zu.



Understanding Core Switch: What It Is and How to Choose the

Typically, core switches are Layer 3 switches equipped with robust network management capabilities.



Core Switch vs Normal Switch: Key Differences Explained

While both core and normal switches play crucial roles in maintaining efficient data flow, their functionality and applications vary significantly. This guide



How to Choose a Core Layer Switch?

Generally speaking, core switches are Layer 3 switches, which can support various network protocols such as routing protocol/ACL/load balancing and have rich functions. The following factors can be

Understanding Core Switch: What It Is and How to Choose the

For core switches, if you want to achieve full-duplex non-blocking, you must meet the minimum standard requirements (backplane bandwidth = port number port rate 2), the higher the



What Is a Core Switch in Networking?

A core switch operates at the italic core layer italic of a hierarchical network design, typically handling a massive volume of data traffic. Its primary



What is a Core Switch , Functions and Difference over Normal Switch

What is a core switch and how it works? This article builds the basics of this kind of switch for the ones who don't know anything about it. What is a Core Switch? It is a powerful



Contact Us

For datasheets, pricing, or custom high-speed optical interconnect solutions, please visit:

<https://www.syropy.com.pl>