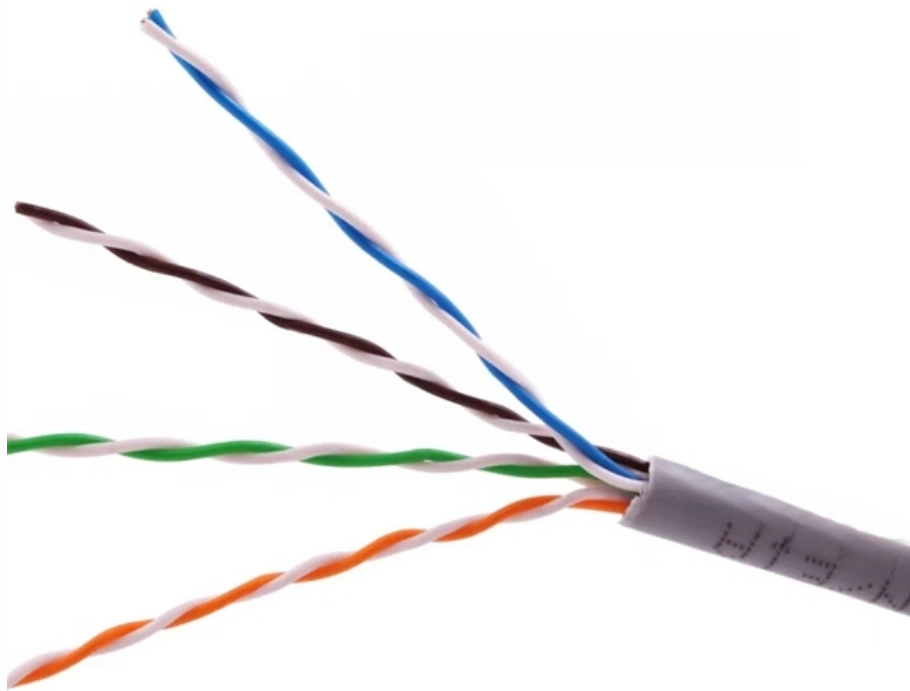


What size outdoor wiring is suitable for a distribution box





Overview

□□ Specification Tip: NEMA 3R is the minimum for exposed outdoor distribution boxes in most applications. Upgrade to 4X for: - Coastal installations (within 10 miles of saltwater) - Chemical processing facilities - Agricultural applications with fertilizer exposure - Areas with. An outdoor electrical distribution box serves as the critical junction point where incoming power lines are split into multiple branch circuits for outdoor installations, parking lots, building exteriors, and industrial facilities. Choose the right box based on environment (indoor/outdoor), load capacity, and durability. Ensure safe placement: install in dry, accessible areas with good ventilation and at appropriate height (typically ~1. Many experts say you should follow these steps: Make clear goals for your project. This outdoor Plot & Service junction box will be utilised for providing/interconnecting service main of distribution network.



What size outdoor wiring is suitable for a distribution box

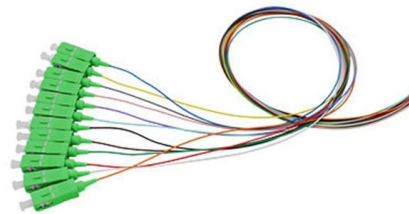


Requirements And Specifications For Installation Of

In flammable and explosive environments, explosion-proof distribution boxes should be selected and explosion-proof treatment should be carried out.

The installation requirements for the distribution box

Introduction
Understanding The Components of A Distribution Box
Selecting The Right Distribution Box
Site Preparation and Location
Requirements
Electrical Connections and Wiring
Compliance with Standards and Regulations
Conclusion
Proper installation of a distribution box isn't just a technical requirement. It's a vital step in ensuring the safety and efficiency of your entire electrical system. Following best practices reduces the risk of electrical fires, power outages, and other hazards, protecting your property and keeping everyone safe. If you're looking for a reliable, See more on eabel Published: Feb 7, 2025 onesto-ep



Choosing a suitable distribution box and what should be noted

Choose the right distribution box by considering load, safety standards, environment, and future expansion. Ensure proper sizing and certified protection

How To Fit Outdoor Junction Box



Outdoor junction boxes are essential for a safe and efficient electrical system in a home or office. Installing an outdoor junction box is not as difficult as you might think, but it is important to

Understanding Distribution Boxes: A Comprehensive Guide

Outdoor distribution boxes are intended for exposed environments where the enclosure may face rain, dust, sunlight, or changing temperatures.



How To Safely Install an Outdoor Electrical Box for Your

An outdoor electrical box is often referred to as a weatherproof outlet box, junction box, or exterior outlet box. These boxes are designed to house electrical wiring,



Cable Distribution Box for Outdoor Distribution

Durable Outdoor Cable Distribution Box Designed for underground or outdoor distribution systems, the Cable Distribution Box offers a tamper-resistant and



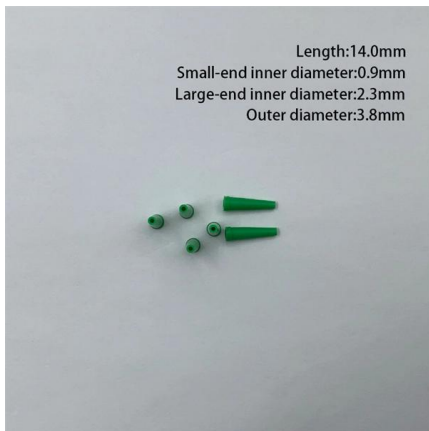


How to Install a Distribution Box--A Comprehensive

The best height for installing residential distribution boxes is 1.5 meters above the ground, while for industrial distribution boxes, the height

How to determine the size, installation method and

When the wall is built, the reserved hole shall be about 20 mm larger than the length and width of the distribution box. The reserved depth is the thickness of the



Weatherproof Outdoor Distribution Boxes: Key Design Insights

Learn the key design points for weatherproof outdoor distribution boxes to ensure durability, safety, and compliance in challenging environments !

Outdoor Electrical Box with Breakers: Circuit Protection & Load

What size outdoor electrical box with breakers do I need for a 200A solar system? For a 200A solar system, you need an outdoor electrical box rated for minimum 225A bus capacity





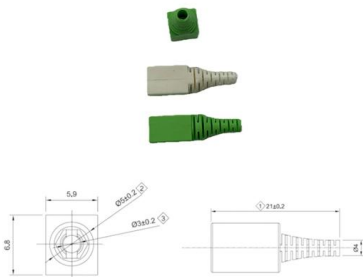
Power Distribution Boxes Explained Simply

Discover the essentials of a Power Distribution Box--how it works, key types, benefits, and tips to ensure safe, efficient electrical power management.



TECHNICAL SPECIFICATION FOR OUTDOOR TYPE

Cable termination arrangement shall be from bottom and suitable for external cables of type and sizes as mentioned in the specification. The box shall be provided with an Aluminium Earth bus at the



Distribution Box and Selection Guide

Different settings have distinct electrical requirements: Residential: Homes typically require single-phase power and a Distribution Box with fewer

NEC Rules for Outdoor Wiring

Outdoor wiring faces harsher conditions than indoor installations as it is exposed to moisture, sunlight, and mechanical damage. Below is a comprehensive guide to NEC rules for



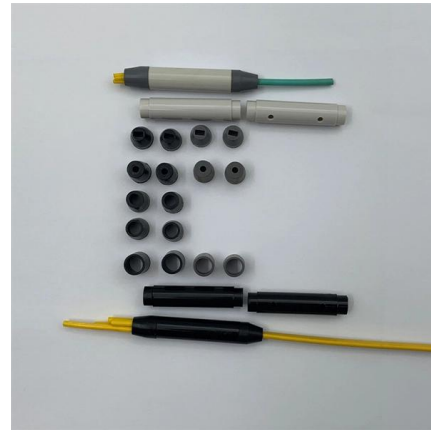


Low voltage distribution box: weatherability standard and protection

Low voltage distribution box outdoor use requires IP65 or NEMA 4X ratings, corrosion-resistant materials, and proper sealing for lasting weather protection.

Free Markdown to HTML Converter

Convert your markdown to HTML in one easy step - for free!



Technical Specifications for Outdoor LT Distribution boxes with

Scope: The scope of this specification covers Weather / Vermin proof LT distribution boxes (LTD) with controllers, MCCB, MCB, Bus bars, Contactors, CT's, Energy Meter, LT gas filled fixed capacitor, DC

Outdoor Electrical Distribution Box Specifications: NEC

Complete specification guide for outdoor electrical distribution boxes covering NEC Article 312 requirements, NEMA ratings, sizing calculations, and



How th Choose the Right Distribution Box?



Find out how to choose the right distribution box for your needs! Learn about sizing, safety standards, essential features, and all factors.



Requirements And Specifications For Installation Of

The wiring process should be standardized to avoid copper wire exposure or unclear wire number identification. All cable inlets and cover joints



TECHNICAL SPECIFICATION FOR OUTDOOR TYPE DISTRIBUTION FEEDER PILLAR BOX

1. Scope: This specification covers technical requirements of design, manufacture, testing at manufacturer's works, packing, forwarding, supply and unloading at store/site and performance of



Choosing a suitable distribution box and what should be noted

You should pick a distribution box by thinking about your safety, what you need, and how much you can spend. The best box keeps your electrical system safe and ready for changes later. Many experts





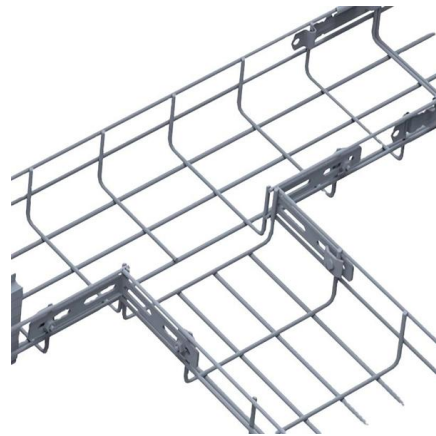
Outdoor Electrical Junction Box: Types & NEC Code Requirements 2025

Learn what an outdoor electrical junction box is, NEC 314 requirements, types like pull boxes and splice boxes, proper sizing



What Is an Electrical Distribution Box? A Complete Guide

An electrical distribution box routes power, prevents overloads, and keeps wiring organised--essential for safe, efficient home and



Contact Us

For datasheets, pricing, or custom high-speed optical interconnect solutions, please visit:
<https://www.syropy.com.pl>