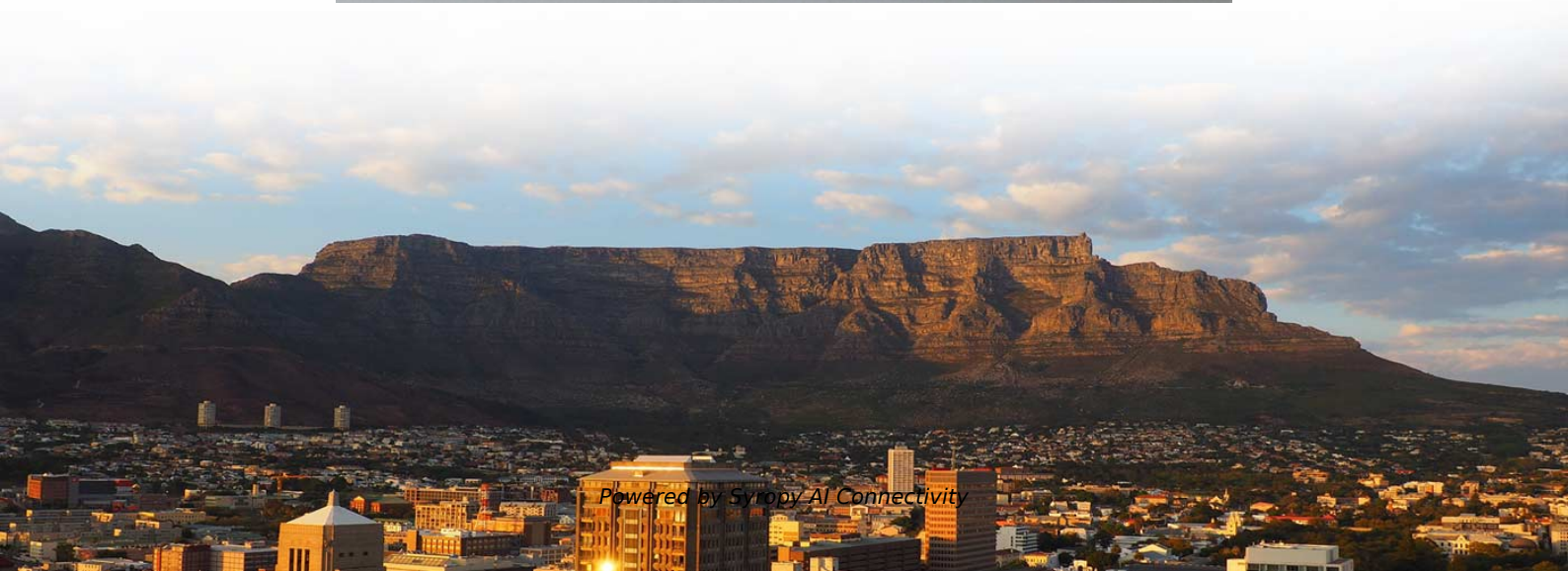


# **What size cable tray fixing bracket should be used**





## Overview

---

Typically, brackets should be spaced 4 to 5 feet apart for standard cable trays. Can I use the same mounting options for wire mesh baskets and cable trays?

The cable support lengths and fittings can basically be designed as cable trays, cable ladders or mesh cable trays, in which cables are routed. Fittings can, on the one hand, be used for horizontal or vertical changing of the routing direction or, on the other, to change the height or width of the. The mechanical and electrical characteristics, tests, certifications, overall quality management, recommendations mentioned in this technical guide only apply to our own cable management ranges and cannot under any circumstances be transposed to si osure, overheating or. Cable ladder systems and cable tray systems shall be manufactured in accordance with BS EN 61537, channel support.



## What size cable tray fixing bracket should be used

---

### Best Practice Guide to Cable Ladder and Cable Tray Systems



These rollers should be properly spaced dependent on the size and weight of the cable to prevent the cable from sagging and dragging in the cable tray or cable ladder during the pull.

### Cable Tray Installation

4. What materials are commonly used for cable trays? Depending on the application and environment, fiberglass, aluminum, and steel (galvanized or stainless) are typically used. 5. What are the standard



### Mounting instructions

The fittings can be used for cable trays of widths of 100 to 600 mm and the heights 35, 60, 85 and 110 mm. The fittings can fastened to the cable tray rail either with double clamps of type DOP A2 or with

### Cable Support Distances

The length between support positions will change depending on the cable design, size, materials and weight. For example, an MDPE sheathed cable will be stiffer and therefore require a greater distance



### **Best Practice Guide to Cable Ladder and Cable Tray Systems**

Cable ladder systems and cable tray systems are designed for use as supports for cables and not as enclosures giving full mechanical protection. They are not intended to be used as ladders, walk ways

### **Master Cable Tray Installation: A Professional Step-by**

Learn how to install cable trays for large-scale projects with our professional, step-by-step guide covering industry standards, safety protocols,



### **Cable Tray Technical Guide A practical guide to product selection and**

The choice of method should be discussed with a local inspector. The best decision may be to extend only the cables, creating a discontinuity in the cable tray.



## GUIDE CABLE TRAYS TECHNICAL

Specifies requirements for metal cable trays and associated fittings designed for use in accordance with the rules of Canadian Electrical Code, Part I and the National Electrical Code®



### Installation of Cable Tray, Trunking And Accessories

Next, the hanger, hanging support, cable tray bracket, and ladder should be trimmed to the required size, and galvanizing paint should be applied on the edges. 7.1.12.

### Product Advice: Bracket Spacing Considerations

Bracket Spacing Considerations: At Armaflo, we understand the importance of optimizing efficiency and cost-effectiveness in every aspect of your cable containment installation projects. One common



### A Guide to Cable Tray Accessories and Their Functions

Explore a detailed guide to cable tray accessories and understand their uses in ensuring safety, stability, and efficiency in electrical system



## Cable Tray Spacing Standards for Installation and Safety

Key Factors Impacting Cable Tray Spacing  
Understanding cable tray spacing is key to meeting safety regulations and maintaining system



### Guide to cable support systems

Fittings can, on the one hand, be used for horizontal or vertical changing of the routing direction or, on the other, to change the height or width of the dimension. Practical examples for this are horizontal or

### Cable Tray Ladder Trunking Wire Basket Installation

Resources For Electrical & Electronic Engineers  
Cable Tray Ladder Trunking Wire Basket  
Installation Guidelines What Are Cable Trays? An  
assembly of



### Best Practices for Installing Cables in Trays

Quick Installation Checklist (Key Steps) Cable  
tray cable installation generally follows these  
steps: Inspect cables before installation Prepare  
and



## Cable Tray Systems: Requirements and Best Practices

Comprehensive guide to cable tray systems requirements: tray types, materials, loading, supports, bonding, routing, and best practices for safe electrical cable management.

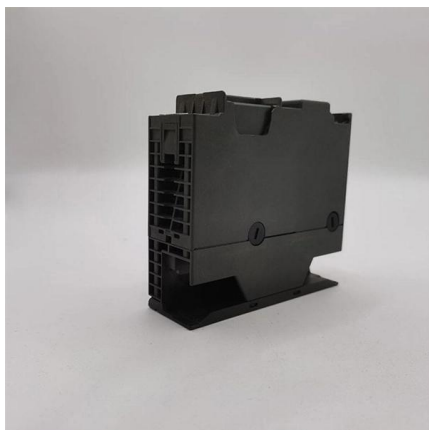


### Best Fixing and Mounting Options for Cable Trays , CMW

Typically, brackets should be spaced 4 to 5 feet apart for standard cable trays. To maintain structural integrity, spacing them closer together is recommended for heavier loads or

### Cable Tray Dimensions Guide: Standard Sizes, Tray

Explore standard sizes by tray type, understand width and depth limits, and see how to calculate and choose compliant cable tray sizes for real projects.



### 100+ Essential Questions Answered About Cable Trays:

How should cable trays be maintained and serviced during use? Regularly inspect the tray's appearance, deformation, fixing methods, and the



## How To: Install Wall Brackets for Cable Trays and Ladders

Welcome to our comprehensive guide on installing wall brackets for different types of cable trays and cable ladders! In this video, we will walk you through the installation process for four



### B-Line series Cable Tray Design Considerations

Note that wider rung spacings and wider cable tray widths decrease the overall strength of the cable tray. Specifiers should be aware that some cable tray manufacturers do not account for this load

### Decoding Cable Tray Support Structures: Tips and Insights

Discover efficient cable tray support structures for optimal cable management. Learn about hanger, wall-mounted, and Unistrut systems for safer



### Legrand Tray

They ensure a rigid and stable fixing, preventing movement or shifting of the cable tray. Legrand stand-off brackets are typically designed to be compatible with specific sizes and types of Legrand cable trays.





## Cable Tray Technical Guide A practical guide to product selection and

**SOLID-BOTTOM CABLE TRAY** Providing additional cable protection, solid-bottom cable tray is sometimes preferred to support and protect numerous small instrumentation and control cables.



## What are the standard requirements of the cable tray bracket, and the

Generally, the flat steel outer bracket is selected below the cable tray width 400mm, and the angle steel outer bracket is selected when the cable tray width is above 400mm.

## How to Calculate the Cable Tray Support Quantity

Learn how to accurately calculate cable tray support quantities in electrical installation projects. Our guide covers methods, tools, and practical



## Cable Tray

Cable trays with a rail height of 60 mm, in widths of 100 to 300 mm (RS 60.100 OV - RS 60.300 OV) are used for ceiling and wall mounting. The cable trays are



## Contact Us

---

For datasheets, pricing, or custom high-speed optical interconnect solutions, please visit:

<https://www.syropy.com.pl>