

What quota should be applied to fireproof cable tray supports





What quota should be applied to fireproof cable tray supports



Cable Tray Technical Guide A practical guide to product selection and

SOLID-BOTTOM CABLE TRAY Providing additional cable protection, solid-bottom cable tray is sometimes preferred to support and protect numerous small instrumentation and control cables.

Best Practice Guide to Cable Ladder and Cable Tray Systems

Cable ladder systems and cable tray systems are designed for use as supports for cables and not as enclosures giving full mechanical protection. They are not intended to be used as ladders, walk ways



Fire Protection of Cable Trays , Ceasefire PFP

For example, a cable tray may contain electrical cables powering essential services that are still required to operate under extreme fire conditions.



GUIDE TO FIRE RESISTANT CABLE FIXINGS G

This guide is given as helpful information for specifiers and installers of electrical systems in the context of cable supports and fixings that satisfy the requirements of the 18th Edition Wiring Regulations.



An In-depth Analysis for Optimal Cable Tray Support Span

A cable tray system is used to support the insulated electrical cable used for power distribution, control and communication in the electrical wiring. Cable tray system has various shapes and



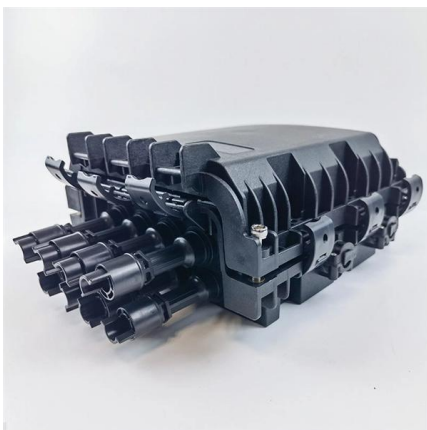
IEC Standard for Cable Tray: Complete Technical Guide

Trays should be installed with correct support spacing, using compatible accessories. Overloading must be avoided, and all bends or junctions



Fireproof Cable Support System

Our Fireproof Cable Support System is heat resistant, prevents cables from falling and support trunking from collapsing in the event of fire.



When it comes to ensuring the safety and longevity of electrical installations, fire resistance and retardation in low-voltage cable trays are crucial. In this blog, we will explore the common issues

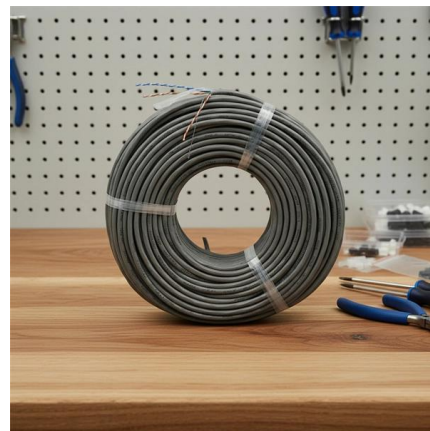


NEC Article 392 Guide: Ensuring Compliance for Cable

The primary rulebook used in the safe use of cable trays is NEC Article 392. This is a description of how to select, install, and support these metal

Guide to cable support systems

The load capacity of the cable trays according to the support width can be read off in the diagram using load curves - here, shown as an example for a cable tray with the tray widths 100 to 600 mm.



LoRawan outdoor base station



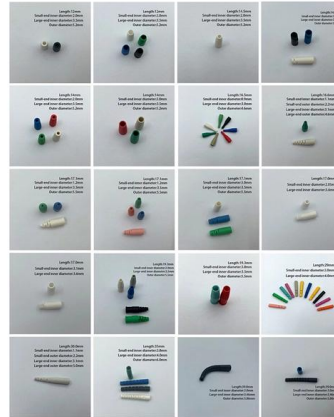
GUIDE TO FIRE RESISTANT CABLE FIXINGS G

Note 3: This regulation precludes, for example, the use of non-metallic cable clips or cable ties as the sole means of support where cables are clipped direct to exposed surfaces or suspended under



Best Practice Guide to Cable Ladder and Cable Tray Systems

Cable ladders and cable trays should be mounted far enough off the floor or roof to allow the cables to exit through the bottom of the cable ladder or cable tray.



Fire-resistant Cable Tray Installation Standards You Should Follow

For electrical contractors, the installation of fire-resistant cable trays is not just about organizing wires--it's about ensuring safety, regulatory compliance, and long-term reliability.

IEC 61537 Cable Support Systems Guide

The document discusses cable support systems used internationally. It provides information on calculating cable loads using cable weight tables to determine the



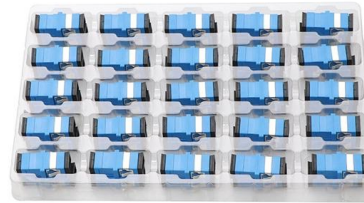
Guide to Fire-blocking Sections (Fire Sections/Fire

In the power industry, the installation of fire-blocking sections (fire-proof sections/fire-proof partitions) on cable trays is an important measure to



Fire and Cable Supports.

Regulation 521.10.202 means that you can't use pvc cable clips as the only method of support on an exposed surface, which is understandable. However, the cables are going to be within the ceiling



100+ Essential Questions Answered About Cable Trays:

Discover over 100 expert answers about cable trays, covering key topics like material selection, load capacity, installation methods, and maintenance.

Fire and Cable Supports.

NOTE 3: This regulation precludes, for example, the use of non-metallic cable clips or cable ties as the sole means of support where cables are clipped direct to exposed surfaces or



Cable Tray Systems: Requirements and Best Practices

Comprehensive guide to cable tray systems requirements: tray types, materials, loading, supports, bonding, routing, and best practices for safe electrical cable management.



Best practice guide to cable ladder and cable tray

Cable ladder and cable tray systems The following recommendations are intended to be a practical guide to ensure the safe and proper installation of



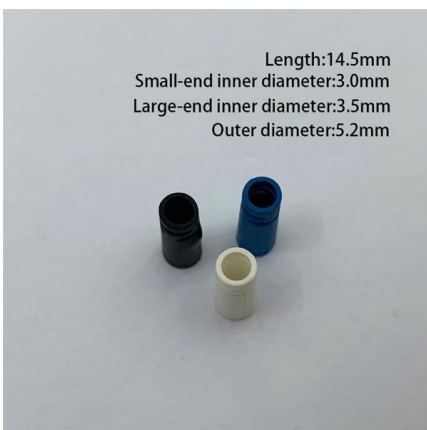
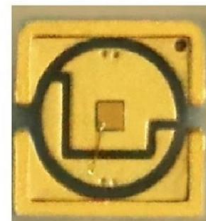
Vogtle Electric Generating Plant (VEGP) Units 3 and 4 Updated

Cable Trays and Cable Tray Supports This appendix provides the design criteria for seismic Category I cable trays and their supports. Seismic Category II cable trays and their supports are also designed



Fire Rated Cable Supports

Note 5 - Existing surface cabling without such fire rated fixings, that in fire conditions could possibly encroach in any passageways, should be classified "potentially dangerous" for remedial action by the



How to Calculate the Cable Tray Support Quantity

Learn how to accurately calculate cable tray support quantities in electrical installation projects. Our guide covers methods,



Technical Guidelines for Cable Tray Installation and

Cable tray installation must comply with specific technical standards to ensure electrical safety, system reliability, and long-term maintainability. This document



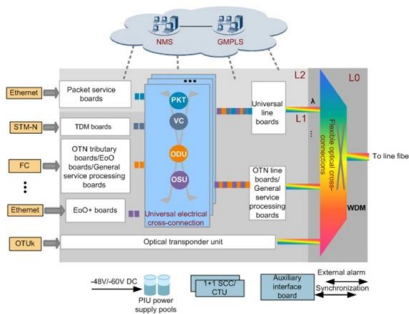
Cable Tray Support Spacing: Key Guidelines Explained

The NEC requires that cable trays must be supported by members at an interval specified by the cable tray manufacturer, but not more than 5 feet for



Fire-Resistant Cable Trays in High-Risk Environments

Explore the importance of fire-resistant cable trays in high-risk environments. Learn about the best materials and practices to



Firestopping Requirements for Cable Trays and

Technical guide to firestopping cable tray and slab penetrations in electrical shafts; specifies materials, packing limits, waterstop heights and



Cable Support Distances

The cable should not be allowed to have a straight vertical run without the addition of a tension relieving section. This normally involves the cable having a short horizontal section (at least 1 metre) included



Contact Us

For datasheets, pricing, or custom high-speed optical interconnect solutions, please visit:
<https://www.syropy.com.pl>