

What quota applies to a 24-core fiber optic distribution box





Overview

The 24 Core Fiber Optic Distribution Box With a maximum capacity of 24 cores, it has the capability to splice up to 72 cores in total. It is a versatile and highly protective solution suitable for both indoor and outdoor use. Fiber core count defines the maximum number of optical terminations or distribution points that a fiber enclosure can support.



What quota applies to a 24-core fiber optic distribution box



8 Port FTTH Fiber Distribution Box with 24 Cable

The 8 Port FTTH Fiber Distribution Box with 24 cable outlets can house 4 sc duplex adapters and one 1x8 blockless splitter and supports 24 cores splicing.

FTTH 24 Core Fiber Optic Distribution Box Optical Fiber Terminal Box

FTTH 24 core fiber terminal box is suitable for the distribution and terminal connection for various kinds of optical fiber system, especially suitable for mini-network terminal distribution, in which the optical



12 Cores Rack Mounted Fiber Optic Terminal Box As distribution box

Buy high quality 12 Cores Rack Mounted Fiber Optic Terminal Box As distribution box FS-JJ/SC24-12C cables management from China Fiber Termination Box supplier with free shipping to worldwide and

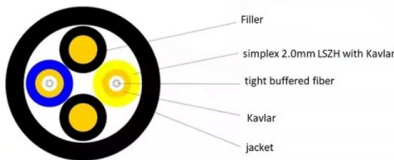
Gcabling 24 Core Fiber Optic Termination Box IP65

Gcabling is one of the top fiber optic distribution box manufacturers & suppliers in China. We can provide different types of fiber termination boxes.



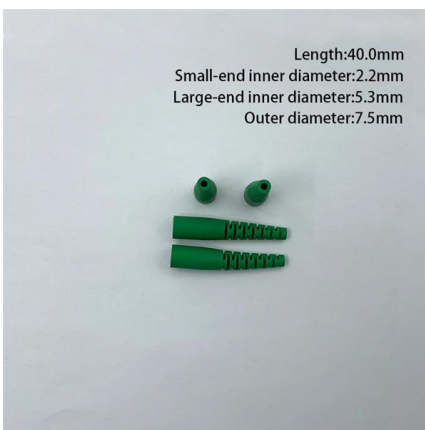
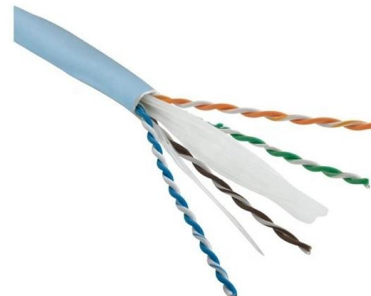
HTB8067 24 Port Indoor Fiber Optic Distribution Box for

The HTB8067 24 Port Indoor Fiber Optic Distribution Box ensures efficient cross-connection between backbone cables and indoor fibers, ideal for



24 Core FTTH IP65 Reinforced ABS Fiber Optic

Designed with a total enclosed structure to provide comprehensive protection for fiber connections. Protection level IP65, ensuring resistance to



24 Port Outdoor Fiber Optic Distribution Box , AZE

AZE's Outdoor Fiber Optic Distribution Box is applicable in FTTH project and suitable for building's outer walls application; They can distribute cables after installing



Optical ODF 24-Port ODF Fiber Optic Distribution Box

It is made of 1U/2U 19" cold-roll steel box, with plastic splice tray inside, suitable for pigtail, ribbon and bunch cable distribution. And it has metal



24 Core Fiber Optic Distribution Box

2in/24out ports Fiber Optic Distribution Box which designed for FTTH application, it can contain 1x4,1x8,1x16 PLC splitter or max supports 24 FTTH drop cable.

Critical 24-Core Fiber Optic Distribution Box Drawing

For network planners and telecommunication engineers, the 24-Core Fiber Optic Distribution Box (FDB) is a foundational component in Fibre-to-the-X



48 Core Fiber Distribution Box: Durable & Versatile

Material: Cold-rolled Steel or Stainless Steel The SJ-ODB-M12 48 core fiber distribution box stands out as a robust solution for managing fiber optic



24 Core FTTH IP65 Reinforced ABS Fiber Optic

Applications The Fiber Optic Distribution Box is ideal for a wide range of fiber optic network scenarios, including: FTTH Network Deployments: Serves



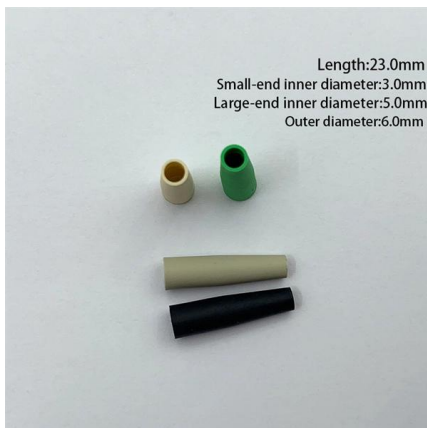
IP65 Waterproof Fiber Optical Distribution Box 24 Port

The 24 Core Fiber Optic Distribution Box With a maximum capacity of 24 cores, it



Ftth box 24 ports cores ODP box fibra optica FTTH caja

The FTTH outdoor wall-mounted optical splitter box is for wiring between optical cables and communication equipment. Via the adapter inside, the optical signal is



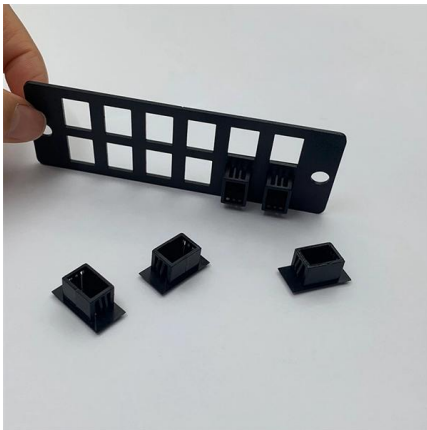
FIBER OPTIC DISTRIBUTION BOX FDB-2-24A FIB

Accommodates splitters and up to 24 SC simplex adapters, Max allowance for entry cables: max diameter 15mm, up to 2 cables, Max allowance for exit cables: up to 24 simplex cables



Fiber Optics Distribution Box

This distribution box terminates outside optical cables with up to 12 fibers; it allocates 12 adapters for connecting with max 12 drop cable pigtailed, it is also suitable for using with mini splitters.



Industrial Fiber Optic Distribution Boxes , 1-24 Cores

We offer a wide range of 1-24 core FDB boxes and ODF cabinets for indoor/outdoor FTTH deployment. Durable, IP65 rated, and easy to install. Browse our models

FTTH Outdoor Termination Box 24 Core Optical Fiber

The FDB is made of high strength materials, UV resistance, waterproof, maximum capacity up to 24 cores, with perfect space design, a variety of PLC splitter can be



Length:44mm
Small-end inner diameter:3.6mm
Large-end inner diameter:5.5mm

JUNPU FTTH 24 core Distribution Box fully loaded IP65

The fiber splicing, splitting, and distribution can be done in this box, and meanwhile, it provides solid protection and management for the FTTH network building.



24-Port Outdoor Fiber Distribution Box , IP65 , SC/LC

The Outdoor Fiber Termination Box is designed to facilitate the connection and distribution of fiber optic cables in FTTH (Fiber to the Home) applications. With a

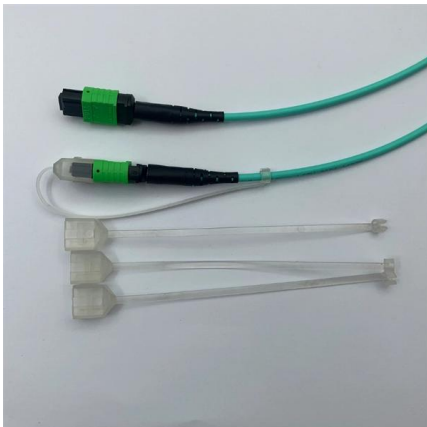


24 Core Fiber Optic Distribution Box

High quality 24 Core Fiber Optic Distribution Box from China, China's leading product market Fiber Optic Management System product market, With strict quality

24 Port Fiber Distribution Box, Blockless Splitter Ready

24 ports fiber optic splitter distribution box is used for feeder cable to connect with drop cable in ftth& fftb communication network.



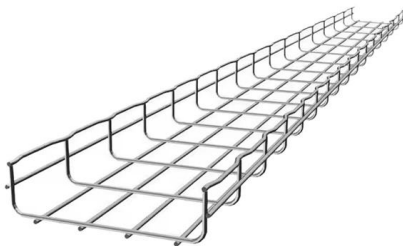
8 Core vs 16 Core vs 24 Core vs 48 Core Fiber Capacity

Engineering explanation of fiber core count differences in terminal boxes and how capacity affects deployment structure and scalability.



24 Port Outdoor Fiber Optic Distribution Box , AZE

AZE's Outdoor Fiber Optic Distribution Box is applicable in FTTH project and



24 Core Fiber Distribution Box-F206

It serves as a central point for distributing and connecting individual fiber strands to other network components, such as optical splitters, connectors, and patch panels.

Fiber Optic Distribution Box

This distribution box terminates up to 2 fiber optic cables, offers spaces for splitters and up to 48 fusions, allocates 24 SC adapters and working under both indoor and outdoor environments.



24 Ports Wall Mounted Fiber Splitter Distribution Box

The 24 ports optical fiber cable distribution box is capable of housing 24 sc or 12 lc duplex adapters, supporting max 24 cores termination. It can accommodate two



24Cores IP68 Fiber Optic Distribution Box

This box is used as a termination point for the feeder cable to connect with drop cable in FTTX communication network system. It intergrates fiber splicing, splitting, distribution, storage and cable



Contact Us

For datasheets, pricing, or custom high-speed optical interconnect solutions, please visit:
<https://www.syropy.com.pl>