

What network should be used for the access switch





What network should be used for the access switch

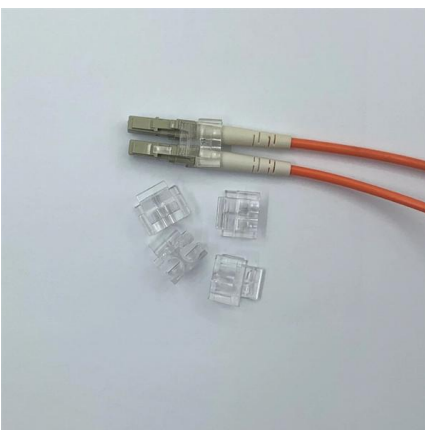


Choose access layer switch for the access layer network

In each layer, the enterprise switches are categorized, among which the access switch is a key part in which local end-users are allowed into the network. This article will introduce what the

How to Choose the Right Access Layer Switch?

Whether setting up a small office or managing a large enterprise network, making the right choice can save you time, money, and headaches in



Access vs. Distribution vs. Core Switch Comparison Guide

Compare Access, Distribution, and Core switches: understand their roles, features, and differences in enterprise network hierarchy. Make informed network design decisions.

What Is an Access Switch? The Definitive Edge Network Guide

Learn what an access switch is, how it works at the network edge, why PoE and port density matter, and how Wi-Fi 7 and IoT change access-layer requirements.

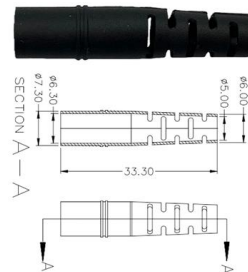


Understanding Access Switches: Key Components of

Access switches are at the core of this infrastructure, representing the first interaction of end-user equipment with corporate networking features. This

Access Switches in Networking: Key Functions , Open

Explore access switches in networking to understand their role in connectivity and traffic management within digital environments.



Access Interface Connectivity

Access Interface Connectivity This workflow describes how to configure the Ethernet interfaces that connect to the end devices of a switch. End devices are the non-networking devices that connect to



What Is an Access Switch? The Definitive Edge Network Guide

This guide explains what an access switch is, what it does, and how to evaluate it in modern enterprise and SMB networks. If you want to understand where the access layer fits in the



What is the Access Switch?

What is the access switch? The access switch is the only one that directly interacts with end-user devices. Because an access network switch connects the majority

Access, Distribution, and Core Layers Explained

A two-tier network combines hardware that supports the distribution and core layers. However, it uses separate hardware for the access layer. A one



What is the Access Switch?

This article will introduce what the access switch is and how to select the right access layer switches for your enterprise network. In the meanwhile, some



SMB Network Design: Core vs. Distribution vs. Access Switches

Don't overspend on network hardware. Our expert guide explains core, distribution, and access switches so you can design the right network for your SMB.

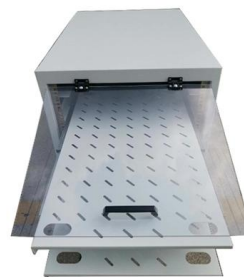


What is a Network Switch? How it Works and Types

What is a network switch? A network switch connects devices in a network to each other, enabling them to talk by exchanging data packets.

Access vs. Distribution vs. Core Switch Comparison Guide

Each layer is served by specialized switches, with the access switch connecting end-user devices, the distribution switch aggregating traffic and enforcing policies, and the core switch acting as the high



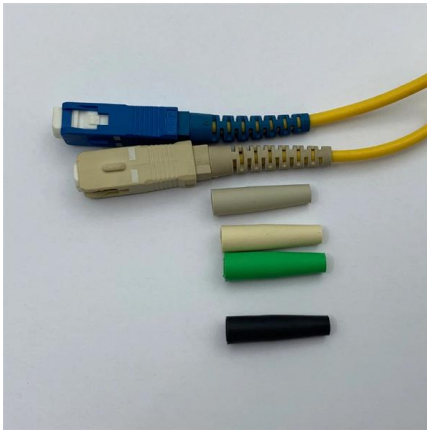
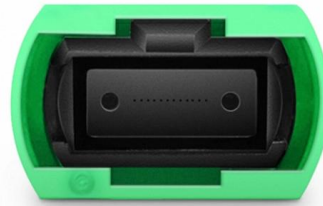
Understanding Access Switches: Key Components of

Within a network, access switches are the elements that connect the devices to the core network. These are network components deployed on the



How Does a Switch Work?

A switch avoids these and other limitations of network hubs. A large network may include multiple switches, which connect different groups of computer systems together. These switches are typically



What is an access switch and how to select access switches?

As key components in a network architecture, access switches are fundamental and widespread in hierarchical network design. An access switch serves as an interface for end-user

What Kind of Access Layer Switch Should You Get?

To secure your LAN, access control services such as 802.1x must be supported in access layer switches. Furthermore, access switches should support



What is an Ethernet switch?

What is an Ethernet switch? An Ethernet switch is a type of network hardware that is foundational to networking and the internet. Ethernet switches connect cabled

Choose access layer switch for the access



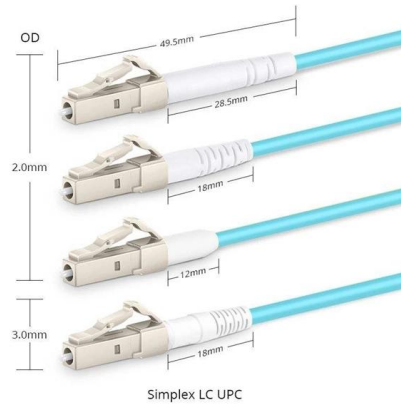
layer network

What is the main function of an access layer?
What does an access layer switch do? How to choose the right network switch for the access layer?



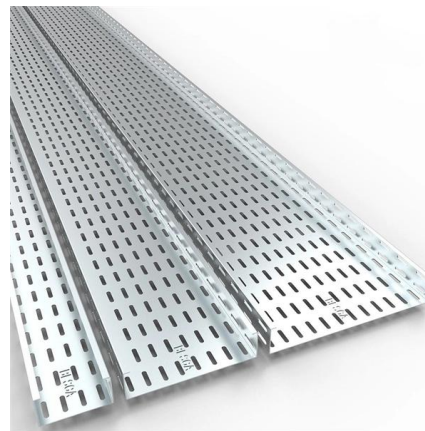
What is a network switch? , Switch vs. router

A network switch forwards data between devices, unlike routers, which forward data between networks. Learn about Ethernet switches, managed switches, and more.



Choose access layer switch for the access layer network

A typical enterprise hierarchical LAN campus network design includes access layer, distribution layer, and the core layer. In each layer, the enterprise switches are categorized, among



What Is Computer Networking? , Definition from

Computer networking transports and exchanges data. Learn about the various technologies that operate networks and the types of networks in use



Contact Us

For datasheets, pricing, or custom high-speed optical interconnect solutions, please visit:

<https://www.syropy.com.pl>