

What needs to be repaired on cable trays





Overview

This guide discusses common cable tray problems, from loosening and corrosion to grounding issues and installation errors, along with strategies for prevention and resolution. Understanding the root causes of cable tray failures is the first step toward ensuring system reliability. When correctly installed, these systems can provide a rigid supporting structure with a long life span.



What needs to be repaired on cable trays



Beama Best Practice Guide , Maintenance Of Cable Trays , CMW

Where damage to an existing cable tray, cable ladder or support has occurred, it may be necessary to make some corrective maintenance. This damage may be represented by, for example, broken

Inspection and Evaluation of Cable Trays: Best Guidance

Cable trays play a critical role in modern electrical systems. They provide essential support for cables, ensuring safety, efficiency, and system



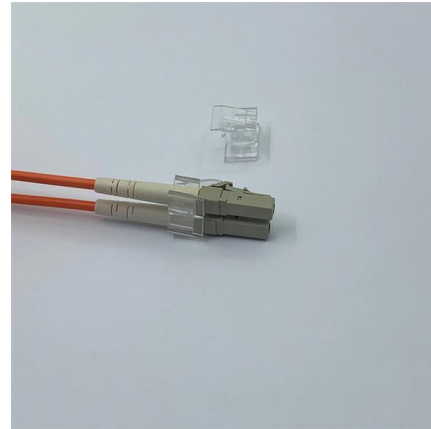
Safety Issues for Cable Tray: Your Guide to Secure

Learn about crucial safety issues for cable trays during installation, repair, and maintenance. Protect your team with essential precautions and best



Cable Trays Maintenance: Tips For Long-Lasting

Cable trays provide proper space for the cable wires. It is open from the upside which makes it easier for the workers to easily monitor the cables.



Common Cable Tray Failures and How to Resolve Them

This guide discusses common cable tray problems, from loosening and corrosion to grounding issues and installation errors, along with strategies for



Reducing Downtime with Efficient Cable Tray Layouts

A cable tray failure is not a repair; it is a power outage in the energy sector. This guide provides practical maintenance plans for EPC contractors and



How to Fix Common Cable Management Issues using

This comprehensive guide investigates the most frequent wire management challenges faced in real-world setups and demonstrates how the



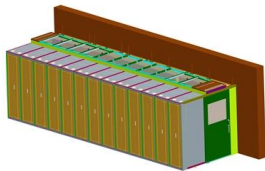
Cable Tray Systems: Requirements and Best Practices

Comprehensive guide to cable tray systems requirements: tray types, materials, loading, supports, bonding, routing, and best practices for safe electrical cable management.



How to Fix Common Cable Management Issues using

Discover common cable management problems and how cable tray accessories effectively solve them to ensure safety and performance.



Connecting Cable Trays: Your Guide to Secure and

Learn common methods for connecting cable trays safely and efficiently. Our guide covers splice plates, quick-connects, and key tips for secure



Common Issues in Steel Cable Tray Installations

This article delves into typical troubleshooting scenarios encountered with cable tray systems, highlighting practical prevention methods and best





Maintenance and Upkeep of Cable Trays

Avoid using wet cloths and hard objects to wipe the surface of the cable tray to prevent scratches or damage. Avoid contact with acidic, alkaline chemicals, and



How to Install Cable Tray: A Comprehensive Guide to Different Cable

Welcome to our step-by-step guide on installing cable trays! In this video, we'll explore the different types of cable trays available and provide detailed instructions for their installation.

Best Practice Guide to Cable Ladder and Cable Tray Systems

Cable ladder and cable tray made from mill galvanized steels do not need to be repaired because they are not designed to be used in heavily corrosive atmospheres and have bare metal edges inherent in



Cable Tray Technical Guide A practical guide to product selection and

Cable Tray Technical Guide A practical guide to product selection and installation This guide for engineers and installers has been developed by ABB as a practical reference regarding cable tray



A Guide to Installing and Supporting Electrical Cable Trays

A professional guide to installing electrical cable tray systems per NEC Article 392. Covers support, securing cables, and fill calculations.



Cable Tray Failures: Types, Causes, and Prevention

However, like any other infrastructure, cable trays are prone to failures that can result in serious safety hazards, financial losses, and downtime.

Common Issues in Steel Cable Tray Installations

Whether installed as stainless steel cable trays, these components offer durable and flexible solutions for routing cables safely. However, improper



AshwinD24's gists · GitHub

GitHub Gist: star and fork AshwinD24's gists by creating an account on GitHub.



How to Replace Cable Trays: Process & Safety Tips

A simple guide on how to replace cable trays. Learn about the process, safety tips, and what to look out for. Ideal for electricians and



Everything You Need to Know About Cable Trays , Cable Trays

Discover the different types of cable trays, their many benefits when used in electrical wiring and network cabling, installation processes, and essential maintenance tips for keeping your

Cable Tray Maintenance Best Practices for Longevity

Discover essential cable tray maintenance tips from Hutaib Electricals, India's leading cable tray manufacturer. Learn how to extend system longevity, enhance safety, and prevent issues



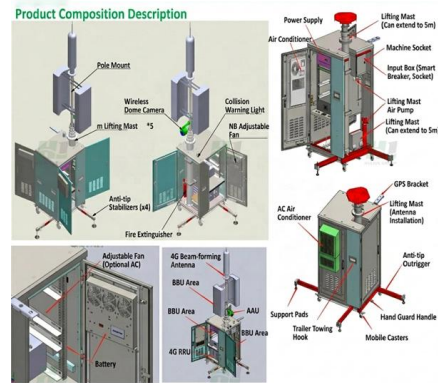
How to Manage Cables in Cable Trays: Principles and Methods

Learn how to manage cables in cable trays effectively with our comprehensive guide for cable classification, protection, and installation to ensure electrical system safety and efficiency.



Cable Tray SHIB NAL

Cable trays are not raceways, but they are treated as a structural component of a facility's electrical system. Cable trays are a part of a planned cable management system to support, route, protect and



Cable Tray Maintenance: Tips for Long-lasting Equipment

Cleaning and Inspection
Repairs and Replacements
Lubrication
Corrosion Protection
Grounding
Load Capacity
Conclusion
Don'T Leave empty-handed!
If any damage is identified during the inspection, it should be repaired or replaced immediately. Any repairs or replacements should be made using materials that are compatible with the original installation. It is important to avoid any mixing of materials that may lead to galvanic corrosion. See more on electrical4uonline cabletraycompany



Inspection of Cable Trays, Installation Instructions Of Cable Tray

If an existing cable tray, cable ladder or support gets damaged, it may be necessary to make some corrective maintenance. This damage may be represented by, for example, broken welds, bent

Contact Us

For datasheets, pricing, or custom high-speed optical interconnect solutions, please visit:
<https://www.syropy.com.pl>