

What model is the low beam module for the A8





Overview

The low beam of the new Audi A8 headlamp is equipped with a compact and efficient LED lens module. Special feature: the modules consist of glass and combine primary and secondary optics in a single body. In that context, light technology is steadily growing more important and creating a wider range of possibilities and perspectives, from added safety for the driver, to external communication and individualization. Comparable with video projectors, the Digital Matrix LED headlights use DMD (digital micromirror device) technology. The Audi A8 facelift was the first new model to benefit from the all-LED adaptive system Audi calls "Matrix". The German company has long had adjustable headlight systems based on its HID Bi-Xenon units, but this one works a little differently.



What model is the low beam module for the A8

Audi A8

The Audi A8 (Typ 4D) was presented in February 1994 and debuted at the 1994 Geneva Auto Show in March, with full-scale factory production commencing in



Audi A8 - Digital Matrix LED and digital OLED technology

The enhanced A8 comes with Digital OLED rear lights (OLED = organic light emitting diode) as a standard feature. When ordering the car, there are two rear light signatures to choose from - three



Audi A8 4.2L Low Beam Lights Not Working Diagnosis

2000 Audi A8 4.2L Low beam lights do not work. High beam lights work. Low beams do not come on when high beams on.

Closing in on low beam failure, pin out info that maybe of interest

This Module checks the amount of current going through and in case of errors it pulls the Break or Headlight signaling Pin from Ground to Vcc. There are two different Lamp Control Modules available.



Audi A3 Headlight Control Module. Low beam. LOW BEAM MODULE;

Module. Control. A Module that Controls and monitors the functions of a vehicle's headlights. Low beam. box. support. Ballast. Circuit board. Headlight. LED lamp. LED



Air Suspension Control suitable for Audi A8 / S8 (4H D4)

Additional functions (eg activation of automatic high beam) Wifi function can be switched off permanently or via 1x ESP (off / on) Switch off module completely



Lighting

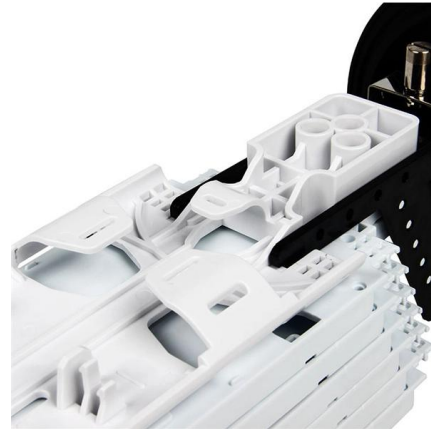
Audi is the world's leading car manufacturer in the field of automotive lighting technology. The company's lighting systems combine exceptional design





A8 right low beam headlight problem

Audi A8 - A8 right low beam headlight problem - I just bought a replacement D2S halogen and (with rubber gloves), removed and replaced the bulb. It did not work.



Audi A8/S8 D4: The Ultimate Headlights! (Custom Auxiliary High/Low Beam)

The D4 Platform already comes with great headlighting solutions. But an additional LED modules are always a must-to-have if you often drive in rainy condition

Hella Partners Audi to Bring HD Matrix LED Headlamps

The low beam of the new Audi A8 headlamp is equipped with a compact and efficient LED lens module. Special feature: the modules consist of



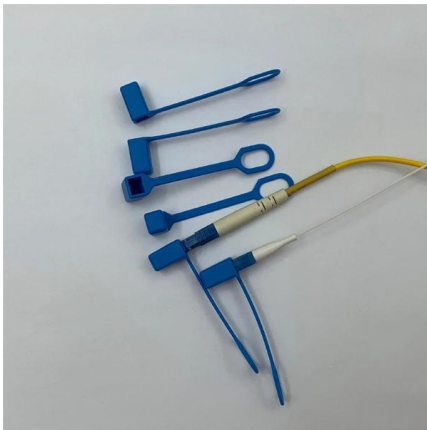
Retrofitting High Beam Assist on 2015 Audi A8

A8 / S8 (D4 Platform) Discussion - Retrofitting High Beam Assist on 2015 Audi A8 - I started another project before finishing the previous ones. I obtained a used high beam assist rear



Audi A8 Low Beam Not Working? Expert Troubleshooting Guide

1999 Audi A8 Quattro Right Low Beam Light Out Issue A8 Quattro low beam failures often involve faulty igniters or control module malfunctions causing persistent warnings. If replacing the bulb doesn't fix



Audi A6/A7/A8 HIGH-BEAM at LOW Speed ACTIVATION using VAG

Short tutorial on how to enable the High-Beam Assist to start working at lower speeds than 60kmph on the Audi MLB Platform.

Audi A8 S8 Matrix LED Headlight Problems A8L

If your 2015-2018 Audi A8 A8L S8 D4 Full LED Matrix Headlight low beam or Headlamp high beam have problems, like light failed failure, flicker, dipped beam



Audi Matrix LED Headlights Overview , PDF , Headlamp

Supply structure of the headlight assist system in the Audi A8 (D4) prior to product upgrade.



Matrix LED headlights

The innovative Matrix LED Headlights in the new Audi A8 (Combined fuel consumption in l/100 km: 9.1 - 5.9; Combined CO₂ -emissions in g/km: 213

-



The 2019 Audi A8 Electrics and Electronics

The term battery data module (BDM) is sometimes also used for J367. The battery should only be tested using the VAS Scan Tool via GFF or Guided Functions. J367 also evaluates the history data of the

How Audi's light digitization is pointing the way toward

It is particularly visible in the new Audi A8: the forward-looking Digital Matrix LED headlights and digital OLED rear lights raise the customer experience



Hella and Audi introduce car featuring dynamic HD

The low beam of the new Audi A8 headlamp is equipped with a compact, efficient LED lens module consisting of glass and combining primary

OLED, Matrix LED high beam and light



animations -

A particularly powerful laser high beam is optional for the new Audi A8, which turns on automatically at a speed of 40mph. A small laser module projecting a light beam across several hundred meters is



CETE Audi A8, S8 Air Suspension Lowering Module

*Note this product is for '11-'18 A8, S8 D4 models only. Please use the menus to find the appropriate year range and model for other years and models. With this

CETE Active Suspension Control

Active Suspension Control - Audi A8/S8 4G/D4 Air Suspension Using the active suspension control module from CETE gives you the ability to use the full range



How To: Audi A8 Xenon to LED Headlight conversion!

/ solveelectronics I finally got around to fitting the LED headlights on my 4H A8 and they work great! I highly recommend doing this!



Technology & Products , HELLA

The low beam of the new Audi A8 headlamp is equipped with a compact and efficient LED lens module. Special feature: the modules consist of glass and combine primary and secondary



Driver side Low beam headlight does not working

A8 / S8 (D4 Platform) Discussion - Driver side Low beam headlight does not working - So for whatever reason, the driver side low beam headlight does not work. Got the codes read and it?s

AUDI A8 and AUDI S8 Owners Club , So for whatever reason

So for whatever reason, the driver side low beam headlight does not work. Got the codes read and it's just "open circuit". But DRL, Turn signals, and high beam works perfectly fine. What do



The new Audi A8

The low beams comprise ten individual modules forming an arc situated below the wing-shaped chrome contour known as the



high beam assist

A4 (B9 Platform) Discussion - high beam assist - I have high beam assist active and selected late in the MMI. When I am driving I have been on pretty dark roads with no traffic the assist is ACTIVE and it



Real World Test: Audi A8 / S8 Matrix LED Headlights on

The Audi A8 facelift was the first new model to benefit from the all-LED adaptive system Audi calls "Matrix".

How Audi's light digitization is pointing the way toward the future

The Digital Matrix LED headlight can deliver cornering, city, and highway lighting as versions of the low-beam light with exceptional precision. It supplements the high-beam light by



Contact Us

For datasheets, pricing, or custom high-speed optical interconnect solutions, please visit:
<https://www.syropy.com.pl>