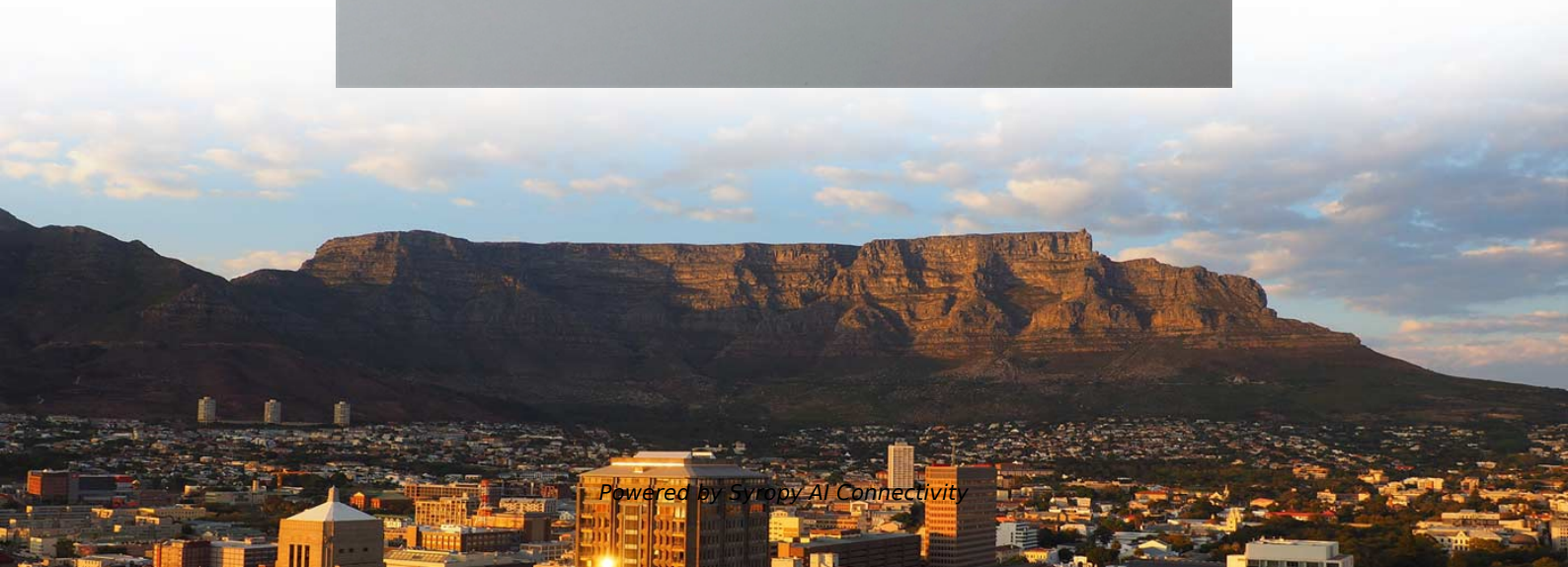
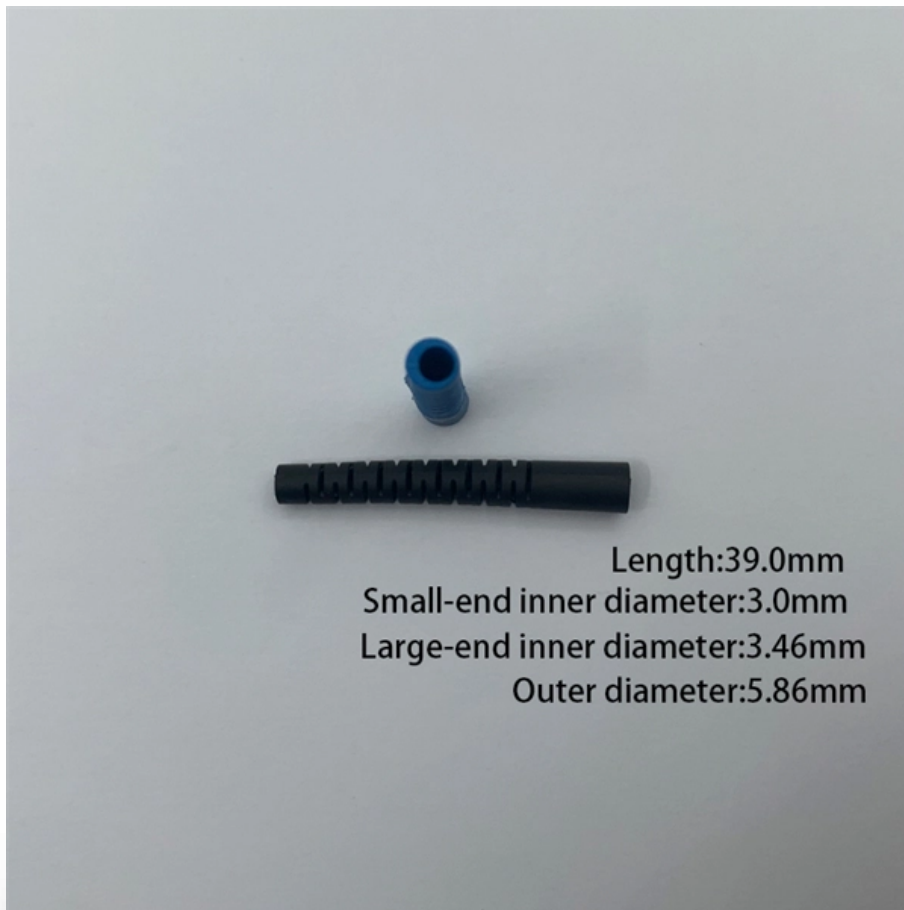


What level of electrical distribution box is used in a home





Overview

A distribution boxes acts as the load center and main distributor of electrical power within a building. There are three levels in the distribution of power distribution box, including grade one, level 2 and end level.



What level of electrical distribution box is used in a home



What is a Distribution Box? - A Comprehensive Guide

Indoor distribution boxes are compact and accessible, suitable for controlled environments such as homes and offices where moisture and

What is an Electrical Distribution Box? A

When it comes to electrical safety, every building -- whether it's a cozy home or a sprawling factory -- needs a secure system to manage and

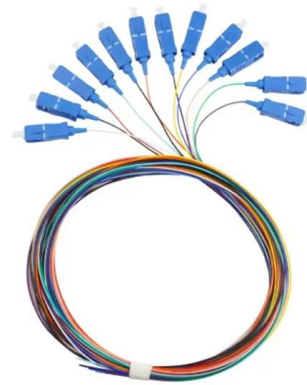


The Complete Guide to Distribution Box: Installation, Types & More

Home distribution boxes typically handle single-phase power supplies and contain 6 to 24 circuits. They include standard circuit breakers for lighting, outlets, and major appliances like water

Distribution Boxes Explained: Types, Functions, and

Learn about distribution boxes, their types, functions, and safety features to ensure efficient and secure electrical power distribution in any building.



Latest news & breaking headlines , The Times and The

The latest breaking UK, US, world, business and sport news from The Times and The Sunday Times. Go beyond today's headlines with in-depth

The Importance of Distribution Boxes in Electrical Systems

A distribution box is necessary for several reasons: Safety: The miniature circuit breakers in the distribution box are designed to protect your



Electric Power Distribution System Basics

Distribution transformer: A distribution transformer, also called as service transformer, provides final transformation in the electric power distribution



Distribution Box Guide: Types, Components & Solutions

Understand distribution boxes (DB boxes) in 5 minutes. Learn about types, components, functions, and uses. Find the perfect DB box for your needs.



Understanding Distribution Boxes: A Comprehensive Guide

A distribution box, also known as a power distribution box or electrical distribution box, is used to distribute electrical power safely to multiple

How to Choose a House Distribution Box , CHINT global

A well-chosen distribution box ensures the safety and efficiency of your household electrical system. This article guides you through selecting a



The difference between the first, second, and third levels of

Third level distribution box: refers to the final junction box of each electrical appliance, which can be movable and fixed. Remember that the leakage protection switch is the last one, and



What Is an Electrical Distribution Box? A Complete Guide

An electrical distribution box is a centralized unit responsible for distributing electrical power across multiple circuits within various



Understanding Distribution Boxes: A Comprehensive Guide

Indoor distribution boxes are used in protected environments such as homes, offices, utility rooms, and indoor technical areas. They are designed for locations where exposure to rain,

Electrical Distribution Box: Complete Panel Types Guide

In single-family homes, the main electrical distribution box typically installs near where the utility service enters the building. This panel receives



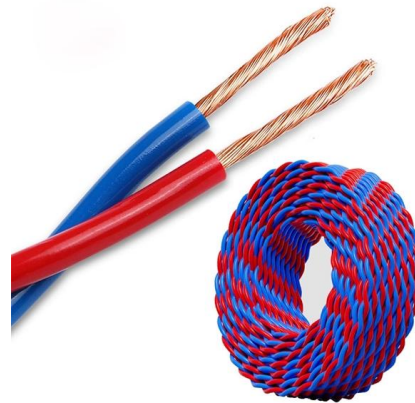
Electric power distribution

A 50 kVA pole-mounted distribution transformer
Electric power distribution is the final stage in the delivery of electricity. Electricity is carried from the transmission



Understanding Distribution Boxes: Your Guide to Power

What are Distribution Boxes and Their Importance? What are Distribution Boxes and Their Importance? Distribution boxes, or electrical junction



Distribution Boxes: Types and Functions

A distribution boxes acts as the load center and main distributor of electrical power within a building. Also called a distribution board, panel board,

The Ultimate Guide to Distribution Box Types

Discover the key types of distribution boxes with NUOMAK's comprehensive guide. Learn about Main Distribution Boards (MDB), Consumer Units, Transfer



Understanding Distribution Boxes:A Comprehensive Guide

A distribution boxes is an essential device that manages the safe and efficient flow of electrical power throughout different areas of a building or facility.



Several grades of household power distribution box

There are three levels in the distribution of power distribution box, including grade one, level 2 and end level. Take the first class household power distribution box as a case, it is the core of the whole



Distribution Boards: Types, Components & Applications

Distribution boards form an important part of electrical installations in today's electricity-dependent world. They act as a central point for the distribution

Power Distribution Boxes Explained Simply

In homes, distribution boxes are used to manage everyday power needs. They control electricity for kitchen appliances, lighting, HVAC systems,



Understanding Distribution Boxes:A Comprehensive Guide

Distribution boxes vary in size and shape based on the complexity of the electrical system and the building's power needs. They can be installed in





What Is a Distribution Box?

In Conclusion Most residential and commercial electrical systems have at least one distribution box. A distribution box is a device that, as the name



Distribution Boxes: Types and Functions

Learn what an electrical distribution box (DB/distribution board) is, its main components (MCB/RCCB/RCBO, SPD, busbar) and common types.

Contact Us

For datasheets, pricing, or custom high-speed optical interconnect solutions, please visit:
<https://www.syropy.com.pl>