

What labels should be affixed to cable trays





What labels should be affixed to cable trays

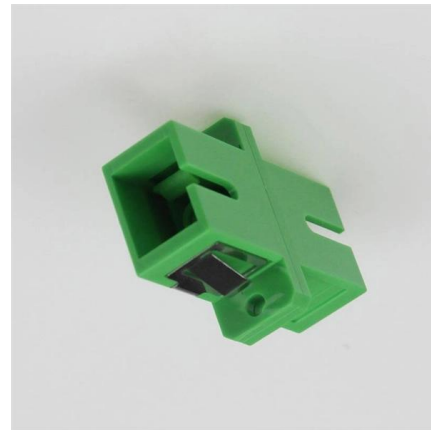


Cable Tray Technical Guide A practical guide to product selection and

SOLID-BOTTOM CABLE TRAY Providing additional cable protection, solid-bottom cable tray is sometimes preferred to support and protect numerous small instrumentation and control cables.

Precautions for Cable Tray Installation

Cable Tray Installation Guide The correct installation of cable trays is crucial for establishing a reliable and efficient cable system. It ensures that cables are

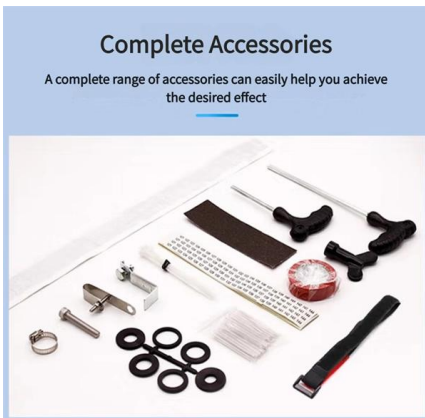


Cable tray manual

These documents: ANSI/NEMA VE-1, Metal Cable Tray Systems; NEMA VE-2, Cable Tray Installation Guidelines; and NEMA FG-1, Non Metallic Cable Tray Systems, are an excellent industry resource in

Cable Tray Manual: NEC Article 392 Guide

Solid bottom steel cable trays with solid covers and wrap around cover clamps can be used to provide EMI/RFI shielding protection for sensitive circuits.

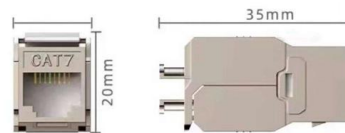


Cable Tray Technical Guide A practical guide to product selection and

In designing supports for a cable tray system, consideration should be given to the loads associated with future cable additions and any additional loading that may be applied to the cable tray system (e.g.,

GUIDE CABLE TRAYS TECHNICAL

NEMA VE 1-2017 Specifies requirements for metal cable trays and associated fittings designed for use in accordance with the rules of Canadian Electrical Code, Part I and the National Electrical Code®



THE BEST PRACTICE GUIDE TO: Wire and Cable Marking

EXCEPTION: Multicolored grounded conductor cables can be permanently identified at their termination at the time of installation by a distinctive white marking or other "equally effective means."

Proper Cable Labeling Guidelines



First, choose qualified cable labels & printers from a reliable manufacturer. High quality labels should be waterproof, tear resistant and scratch



Affixing Labels

Affixing a Label to a Signal Cable The label attaching position on a signal cable is 2 cm from the connector. In special cases, for example, to avoid bending the cable or affecting other

Labeling of Wires, Cables, Electrical Areas and

Equipment in Electrical Work All signs and labels shall be furnished and installed by the contractor. All substation yards and transformer areas must be



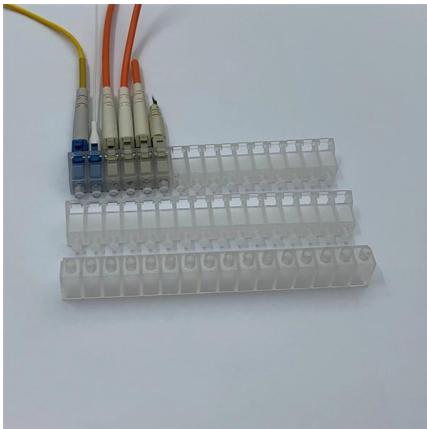
230.44 Cable Trays.

If a cable tray is in fact used to support service entrance conductors, labels are required on the cable tray so that the servicing electrician is aware that



Affixing Labels

Affixing a Label to a Signal Cable The label attaching position on a signal cable is 2 cm from the connector. In special cases, for example, to avoid bending the cable or affecting other cables, you



Best Practices for Installing Cables in Trays

Learn the best practices for installing cables in trays. This guide covers essential steps, technical requirements, and key details

How to Read Tray Cable Markings and Labels?

Only tray cables labeled "Sunlight Resistant" or with a "SUN RES" or equivalent UV protection marking are certified for exposed installations. Standard tray cables without this rating will



WebiTelecomms Cabling



Labeling of Electrical Areas and Equipment - Method

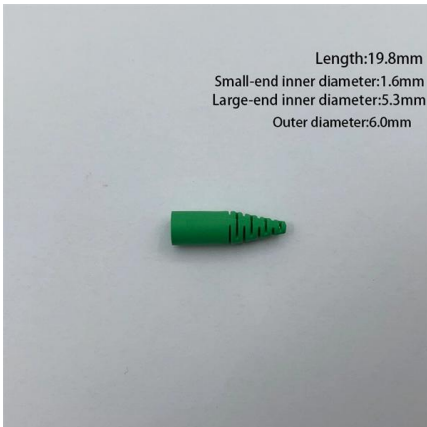
The label should also include panel or MCC number, breaker or bucket number, or switchgear cubical. In accordance with NEC article 392, all cable trays containing

Cable Tray Systems: Requirements and



Best Practices

Comprehensive guide to cable tray systems requirements: tray types, materials, loading, supports, bonding, routing, and best practices for safe electrical cable management.



pg133

Raceways, cable trays, and other wiring methods for intrinsically safe system wiring shall be identified with permanently affixed labels with the wording "Intrinsic Safety Wiring" or equivalent.

Safely Installing, Maintaining and Inspecting Cable Trays

cable tray and even leading to possible electric shock and arc-flash/blast events from component failure when the cables are suddenly no longer supported. When cable trays are overfilled, excessive heat



How to Manage Cables in Cable Trays: Principles and Methods

Learn how to manage cables in cable trays effectively with our comprehensive guide for cable classification, protection, and installation to ensure electrical system safety and efficiency.



100+ Essential Questions Answered About Cable Trays:

Discover over 100 expert answers about cable trays, covering key topics like material selection, load capacity, installation methods, and maintenance.



A Complete Guide to Wire and Cable Labeling Standards

What types of cable labels are recommended for electrical safety? For electrical safety, high-quality self-adhesive cable labels are recommended. These

The Ins and Outs of Electrical Labeling -- Part 1 of 2

Service equipment Let's take a quick tour through a typical factory to determine some of the more important labeling considerations. First, power is



NEC Questions and Answers based on 2017 NEC ®

Cable tray installations aren't limited to industrial establishments. If exposed to the direct rays of the sun, insulated conductors and jacketed cables must be



230.44 Cable Trays.

Such cable trays shall be identified with permanently affixed labels with the wording "Service-Entrance Conductors." The labels shall be located so as to be visible after installation and placed so that the



Contact Us

For datasheets, pricing, or custom high-speed optical interconnect solutions, please visit:
<https://www.syropy.com.pl>