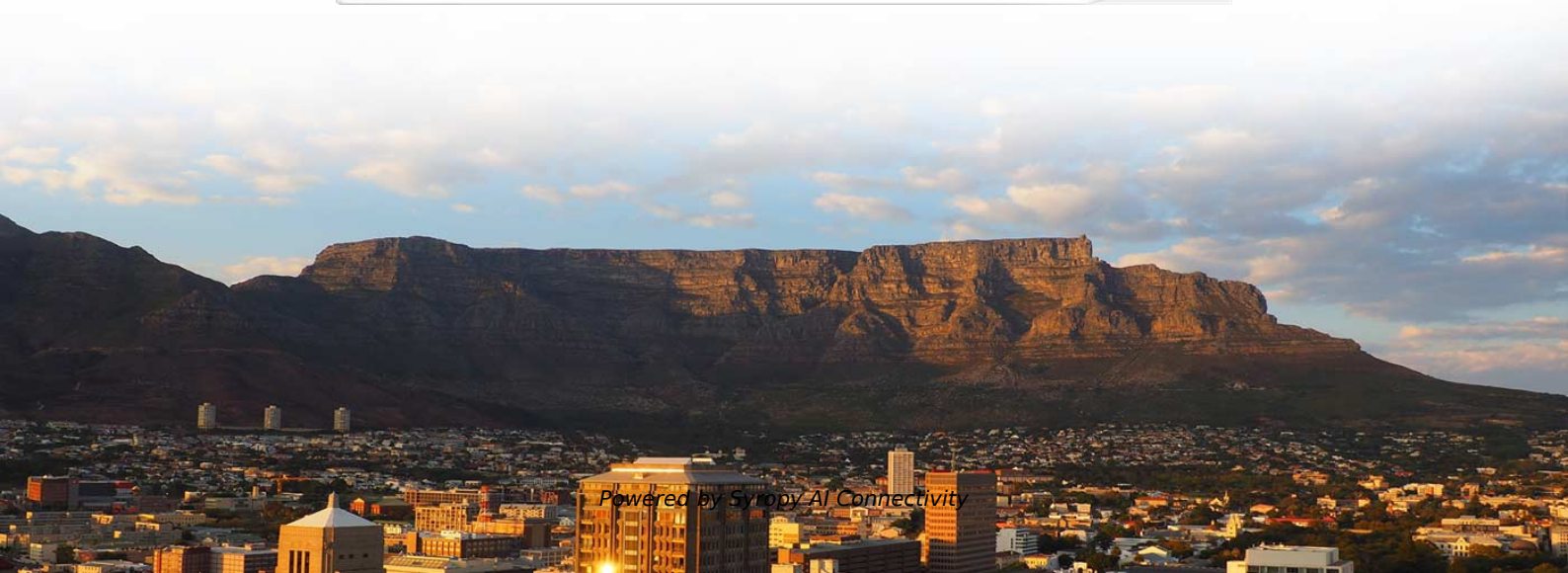


What is the typical width of a cable tray





What is the typical width of a cable tray



Cable Tray Management System , IES Manufacturing

Our products are commonly used in industries such as power generation, chemical processing, petroleum, and other heavy industrial sectors. All cable trays are manufactured in standard widths



Cable Tray Dimensions and Specifications as per NEC

Proper cable tray: A simple method for determining the correct cable tray width is to calculate the cable tray widths needed for each of the cable

Types of Cable Trays - Advantages, Applications and Sizes

Explore the types of cable trays, their advantages, applications, and standard sizes. Learn how they improve cable management and support various industries.

Pre-Terminated Patch Panel

- Multi-application support
- Flexible configuration
- Modular design



Cable Tray Size Guide: How to Choose the Right Dimensions

Cable tray width depends on cable quantity and diameter. For light applications use 50-100mm, medium duty 200-300mm, and heavy industrial applications 450-600mm.



Cable Tray Size Chart and Selection Guide

When planning electrical cable tray dimensions for width, engineers should also account for future cable additions, typically reserving 25-40% spare capacity to accommodate system

Non Flammable Galvanized Steel Cable Tray / 50mm-1000mm Galv Cable Tray

Buy Non Flammable Galvanized Galvanized Steel Cable Tray / 50mm-1000mm Galv Cable Tray from quality Hot Dip Galvanized Cable Tray China factory on machineu .



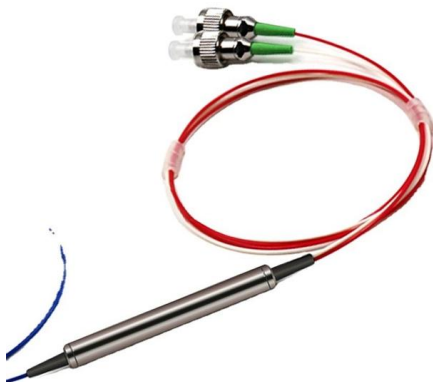
Cable Tray Roll Forming Machine

Solid Bottom Cable Tray Machine Non ventilated continuous support for delicate cables with added cable protection available in metallic and fiberglass. Solid



B-Line series Cable Tray Design Considerations

Ladder cable tray is available in widths of 6, 9, 12, 18, 24, 30, 36, 42 and 48 inches with rung spacings of 6, 9, 12 or 18 inches. Note that wider rung spacings and wider cable tray widths decrease the overall

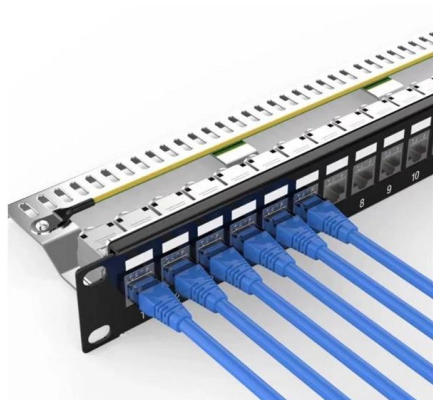


Cable Tray Size and Dimensions: How to Choose the Right Fit for

Cable trays vary in size in order to accommodate varying numbers of wires. International projects are most often made in widths of between 50mm and 900mm and depths of between 50mm

What is the standard size of cable tray?

Common Cable Tray Sizes Cable trays are available in a wide range of sizes, but some standard widths are more commonly used: 1. 300 mm (12 inches)



A Complete Guide to Cable Trays Sizes and Selection

Here in the UK, standard widths run from a slim 50mm for a handful of data runs right up to 900mm or more for the heavy-duty containment needed in

GUIDE CABLE TRAYS TECHNICAL

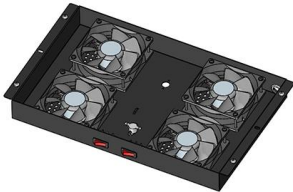


In accordance with its continuous improvement policy, Legrand reserves the right to change the specifications and illustrations without notice. All illustrations, descriptions and technical information



Cable Tray Dimensions and Specifications as per NEC

Many electrical systems employ cable trays. They route cables safely & efficiently. NEC defines minimum cable tray size & electrical installation



Hot-Dipped Galvanized Ladder Tray

C-Channel Swage Ladder tray systems are a cost effective alternative and allow for easy installation of cables by electricians as well as future access for adding or



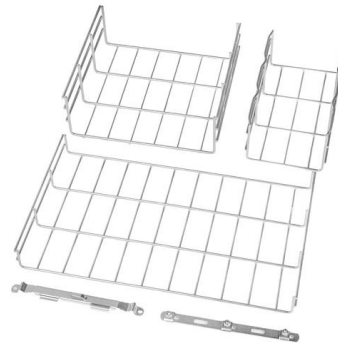
Cable Tray Size Chart and Selection Guide

Cable tray width represents the inside measurement between the longitudinal side rails and is the primary dimension that determines cable capacity. Standard electrical cable tray



Cable Tray Width, Dimensions and Specifications as per

Learn about cable tray width dimensions and specifications as per NEC standards. Understand types, sizes, materials, and installation guide



Cable Tray Roll Forming Machine Manufacturers/for

DUWELL Cable Tray Roll Forming Machine produces adjustable C and U profiles (100-600mm width, 50-100mm height, 0.8-1.5mm thickness). Set dimensions on

GUIDE CABLE TRAYS TECHNICAL

the bracket's cable tray. In the majority of cases, the cable tray widths correspond to the bracket lengths, L, and the resulting figure is at L/2. The torque is then determ



Verified Supplier Cable Tray 400mm Hot-Dipped Galvanized Material

Types of cable tray 400mm A cable tray 400mm wide comes in various types. They include the aftermentioned: Steel wire cable tray This type has great strength and supporting capacity.



Cable Tray Technical Submittal Mistakes That Cause Rejection

Critical Mistakes in Cable Tray Submittals 1. Load Test Report Does Not Match Submitted Product
This is the most frequent and most critical mistake. Typical issues: report based on different



What is the standard size of cable tray?

What is the standard size of cable tray? The standard sizes of cable trays vary depending on the manufacturer, application requirements, and regional

A Guide to Cable Tray Accessories and Their Functions

Explore a detailed guide to cable tray accessories and understand their uses in ensuring safety, stability, and efficiency in electrical system



Cable Tray Size and Dimensions: How to Choose the

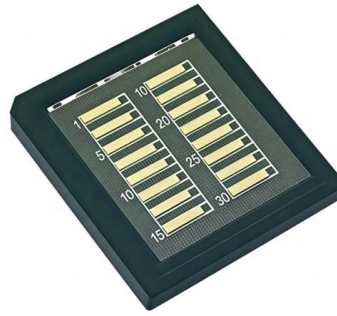
Learn how to calculate the perfect cable tray size and dimensions for your electrical project. This guide covers load capacity, fill ratios, and industry

Cable Tray Dimensions Guide: Standard



Sizes, Tray

Explore standard sizes by tray type, understand width and depth limits, and see how to calculate and choose compliant cable tray sizes for real projects.



Cable Tray Width, Dimensions and Specifications as per

Cable Tray Width, Dimensions and Specifications as per NEC Learn about cable tray width dimensions and specifications as per NEC standards. Understand types,

Contact Us

For datasheets, pricing, or custom high-speed optical interconnect solutions, please visit:
<https://www.syropy.com.pl>