

# **What is the temperature of the high-voltage copper busbar**





## Overview

---

Thermal withstand ensures the busbar temperature does not exceed the short-time limit (250 degrees C for copper per IEC 61439-1) during a fault:  $A \geq I \times \sqrt{t} / k$ , where  $k = 143$  for copper (or use 13 for Aluminium per IEC 60865-1). In this new edition the calculation of current-carrying capacity has been greatly simplified by the provision of exact formulae for some common busbar configurations and graphical methods for others. Connections of the busbars in switchgears are studied from the point of view of the electrical contact resistance and of the temperature (tests and thermal simulations), with some parameters such as: contact pressure, overlap length, and the arrangement of the connections. Short circuit withstand is verified using the adiabatic equation, ensuring the busbar. The temperature rise inside a controlgear is caused by the heat dissipation of conductors, connections, magnetic circuits, and other components and is an important factor to be considered in the development of new operation and construction techniques for electric equipment, especially since high.



## What is the temperature of the high-voltage copper busbar

---

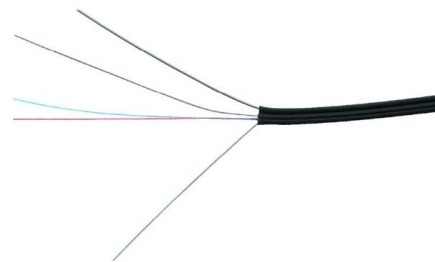


### Busbar Electrical System Explained: Types, Applications

Discover how a busbar electrical system works, including busbar types, applications, and key design factors. Learn why electric busbars are

### thermal modeling of temperature rise in high-current copper busbars

This executive summary introduces a rigorous approach to thermal modeling of temperature rise in high-current copper busbars (I<sup>2</sup>R, skin & proximity effects), targeted at engineers designing busbars,



### Cast Copper Pure Copper Busbar Material: Comprehensive Analysis

Cast copper pure copper busbar material represents a critical conductive component in modern electrical distribution systems, characterized by exceptional electrical conductivity (typically

### How to Select the Right Busbar for Your Panel

Busbar choice sets thermal margin, fault survival, voltage drop, joint reliability, and future expandability for the whole assembly. A good design balances rated current, prospective short-circuit



### Learn about our power busbar solution products , TE

Key benefits: Smart busbar power connectors send temperature data to a server rack controller. Failures can be predicted and corrected. Connectors can operate



### technik\_im\_detail\_en.book(dri1308051en.fm)

For safe operation with thermal reserve, it is advisable to limit the busbar temperature to a maximum of 85°C. However, the decisive factor is the lowest permissible continuous temperature of the



Focus creates quality products



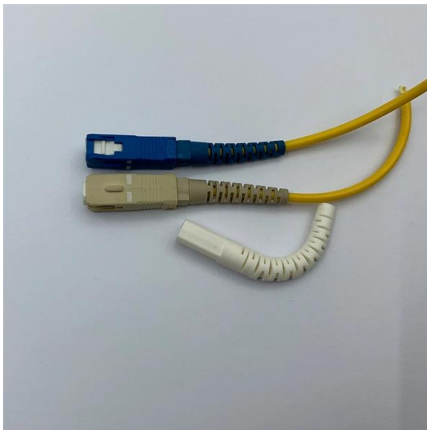
### Copper for Busbars

Although busbar systems should normally be designed for lowest lifetime cost - which means a lower working temperature to reduce waste energy costs - the ability of copper to maintain its mechanical



## Thermal Model for Copper Busbar and Electrical Connections for

This paper presents the mathematical modeling that provides the internal heating of a controlgear's busbars and electrical connections. The obtained results are compared to the temperature rise ( T )



## Low Voltage Busbar Future-proof Strategies: Trends, Competitor

Explore the dynamic Low Voltage Busbar market, forecasting significant growth driven by urbanization, smart grids, and EV adoption. Discover key trends, applications, and regional market insights from

## Operating Temperature of Current Carrying Copper Busbar Conductors

Abstract Copper busbar conductors are an integral part of any high current switchboard. A suitable switchboard design must be capable of withstanding the mechanical, electrical mal stress the project



## Thermal Limits for Copper Conductor Busbars , True Geometry's Blog

This calculator determines the maximum allowed temperature rise for a copper conductor used as a busbar, based on current, cross-sectional area, ambient temperature, and maximum



### Busbar Calculator -- Current Rating, Temperature Rise, IEC 61439

Busbar sizing calculator for copper and aluminum per IEC 61439. Current rating, temperature rise, short-circuit forces, and skin effect. User-selectable busbar dimensions.

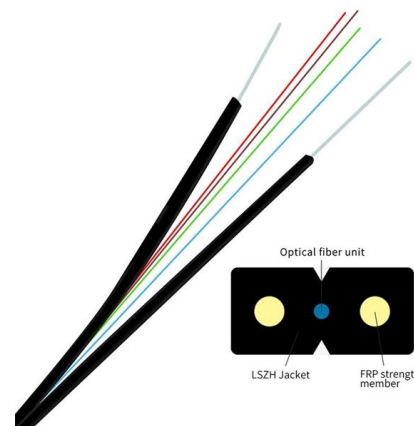


### Thermal Analysis of Busbars from a High Current Power Supply

This paper proposes a mathematical model for busbars used within a high current power supply. The obtained thermal model can be used to analyse the thermal behaviour of busbars in

### Flexible Busbar: Types, Sizing & IEC/UL Standards

Verifying with Vendor Tables & Tests Always consult manufacturer tables and test data when available, especially since flexible busbar ampacity can



### Wire Ampacity Charts , Wire Gauge Chart

Conditions: The environmental conditions also have a high effect on wire ampacity. The technique used for wire installation and environmental



## Electrical Busbars: Function, Types, Design & Selection

Electrical busbars are solid conductors used to carry and distribute high current in switchgear, panels, substations, and power systems. This guide

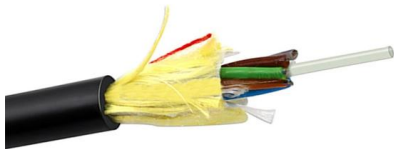


### What Is a Busbar?

The core components of a busbar system work together to create this electrical superhighway:  
Conductor Material: The heart of any busbar is its conductor,

### China Copper Foil Flexible Laminated Copper Busbar Manufacturers

Copper Foil Flexible Laminated Copper Busbar is a conductive bar made of multiple layers of thin copper foil stacked, laminated, and optionally insulated. It is used to replace rigid copper bars and



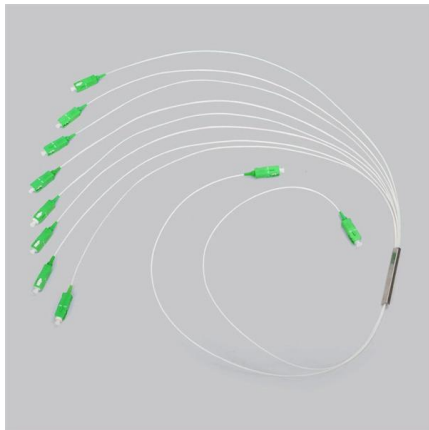
### Precision Part Leveler for Copper Busbars: 2.5mm EV Solution

A precision part leveler for copper busbars neutralizes severe mechanical stress and warpage in thick, pre-cut metal strips used for EV battery packs and high-voltage cabinets. Contact resistance



## What is Busbar? Types, Advantages (2026 Updated Guide)

Busbars are metal strips or bars made of copper or aluminum. They are key components in electrical systems that can efficiently collect and distribute



**Busbars are simple in principle, complicated in practice:**

The temperature rise can be significant, as the table shows - a consideration that many designers are unaware of, especially those with

## Switchgear Busbar Sizing Guide: Current, Temperature Rise, and

Switchgear Busbar Design switchgear busbar sizing busbar current rating temperature rise switchgear short time withstand IEC 62271 IEC 61439 IEC 60076 Power distribution FAQ What



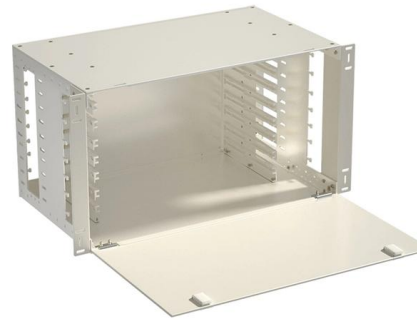
## Busbar Design: Engineering for High-Power DC

In high-performance inverter systems, busbars define distribution stability. For more information, see DC Cable Sizing Guide. Conclusion Busbars



## Safety Distance for Low-Voltage Busbars

Bare copper busbars: Minimum clearance  $\geq 20\text{mm}$  to avoid phase-to-phase or phase-to-ground faults. Insulated busbars: Insulation allows for reduced clearance but must meet IEC 60664 or UL



## Copper Busbars

The gradient of the "straight line fit" shows that  $5.9\text{A}/\text{mm}^2$  is a rough estimate for copper busbar size. However, to be on the safe side of this I would initially size at

## In-depth analysis of the copper busbar tin plating process and

Tin Plated Copper Busbar covers the copper surface with a layer of metallic tin to effectively isolate air and moisture erosion, and has become a widely used conductive component in



## Copper Busbar Design Guide: High-Current Applications

Standards such as IEC 61439-1 limit the allowable temperature rise for busbars and components (e.g., 105 K for bare copper busbars, with maximum absolute temperatures around 140

## Busbar Fabrication: Machines, Process & Production



Complete busbar manufacturing guide: copper processing steps, fabrication machines (punching, bending, cutting), production line setup, costs &



## Contact Us

---

For datasheets, pricing, or custom high-speed optical interconnect solutions, please visit:  
<https://www.syropy.com.pl>