

What is the standard power of a single-mode optical fiber





Overview

OS1 is defined in ISO/IEC 11801, and OS2 is defined in ISO/IEC 24702. In fiber-optic communication, a single-mode optical fiber, also known as fundamental- or mono-mode, is an optical fiber designed to carry only a single mode of light - the transverse mode. Modes are the possible solutions of the Helmholtz equation for waves, which is obtained by combining. With a typical core diameter of 8-10 micrometers (μm), single-mode fiber minimizes modal dispersion and enables signal transmission over distances of up to 100. OS1 fiber: This tight buffered cable is designed for indoor applications, such as campuses or data centers, where the maximum.



What is the standard power of a single-mode optical fiber



Optical power meter

An optical power meter (OPM) is a device used to measure the power in an optical signal. The term usually refers to a device used for measuring the average power in fiber optic systems.

Single Mode Fiber - A Comprehensive Guide

Discover how single mode fiber is the backbone of the internet, data centers, and telecommunications, facilitating the rapid transmission.



What are the key specifications of single-mode fiber

Explore the essential specifications of single-mode fiber optic cables, including core size, attenuation rates, bandwidth capabilities, and standard

Transmission Media in Computer Networks

Transmission media refers to the physical or wireless communication channel used to carry data signals from one device to another within a computer



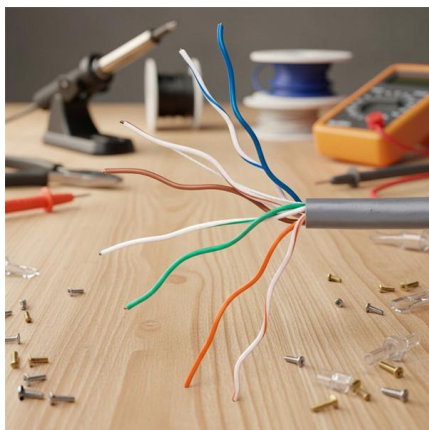
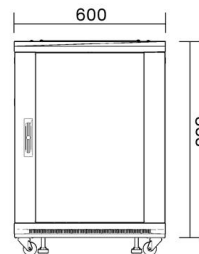
Single Mode vs Multimode Fiber: A Complete

Understand the difference between fibers: single mode offers long-distance, high bandwidth, while multimode suits short runs and lower costs.



Single -mode fiber type, characteristics and application

Single-mode fiber (SMF) is a type of optical fiber that is designed to propagate a single mode of light. SMF has a much smaller core diameter than multimode fiber, typically ranging from 8



What Is Single Mode Fiber and How Does It Work

Exceptional Bandwidth and Data Rates: With modal dispersion removed, single mode fiber optic cable supports virtually limitless bandwidth



Nasdaq: Stock Market, Data Updates, Reports & News

Get the latest stock market news, stock information & quotes, data analysis reports, as well as a general overview of the market landscape from Nasdaq.



ITPro Today, Network Computing, IoT World Today combine

ITPro Today, Network Computing and IoT World Today have combined with TechTarget . The page you are looking for may no longer exist.



800G Optical Transceiver Fiber Optic Transceivers for AI Cluster

The 800G OSFP DR8 optical transceiver is designed for AI cluster networking, supporting high-throughput data exchange in large-scale computing environments. It enables 800G transmission



Public switched telephone network

The public switched telephone network (PSTN) is the aggregate of the world's telephone networks that are operated by national, regional, or local telephony operators. It provides infrastructure and





Single-Mode Optical Fiber

Single-mode fiber optic cables use a stronger, brighter light source with less attenuation. Its ability to provide unlimited bandwidth simultaneously



Single Mode vs Multimode Fiber: What's the difference?

Single Mode fiber optic bandwidth is theoretically limitless, and boundaries are being pushed in lab conditions every year. It all depends on the

Single-Mode vs Multimode Fiber Optic Cables: A Comprehensive

Single Mode fiber features a narrow core (8.3 to 10 um) that allows only one mode of light to propagate. This eliminates Modal Dispersion, which is the primary factor that limits distance in optical



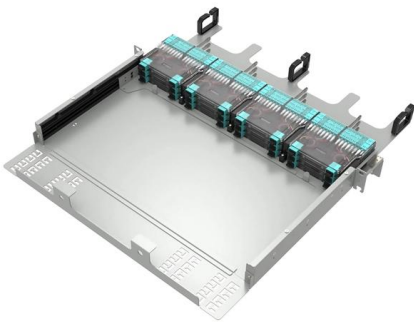
SFP GE LH80 SM1550 BIDI Optical Module, 80KM Gigabit Single Mode Single

Product Description Features: 1. Gigabit single mode single fiber, 1.25G single channel. 2. Meet the SFF-8472 protocol standard. 3. Provide high performance, low power consumption, ensuring stable



Single-Mode Fiber-Optic Cabling:

Explore the high-speed world of single-mode fiber-optic cabling, where data travels on beams of light, offering unparalleled efficiency.



Optical ground wire

Optical ground wire An optical ground wire (also known as an OPGW or, in the IEEE standard, an optical fiber composite overhead ground wire) is a type of cable that is used in overhead power lines.

Press corner

Find highlights, press releases, and speeches from the European Commission in one place.



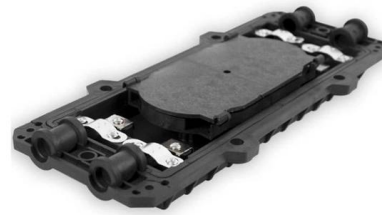
Singlemode vs Multimode Optical Fibre

Singlemode fibre is used in many applications where data is sent at multi-frequency (WDM Wave-Division-Multiplexing) so only one cable is needed: singlemode on one single fibre. Singlemode



Understand Single Mode Fiber Types And Application

In particular, single mode fiber has attracted much attention due to its unique characteristics and wide range of application scenarios.



Optical Fiber Modes , Speed, Bandwidth & Signal Clarity

Explore the differences between single-mode and multi-mode optical fibers, their impact on network speed, bandwidth, and clarity for efficient

Everything You Need to Know About Single Mode Fiber

Single Mode Fiber Optic Cable achieves its performance by reducing the core diameter to 8-10 um (approximately 1/10 the thickness of a human hair), allowing



Google

Checking your browser before accessing undefined Click here if you are not automatically redirected after 5 seconds. Checking your browser - reCAPTCHA



The Power of Single Mode Fiber: Advantages and Applications

Discover the advantages of single mode fiber (SMF) and its wide range of applications in optical networks. Learn why SMF is the preferred choice for long-distance data transmission and

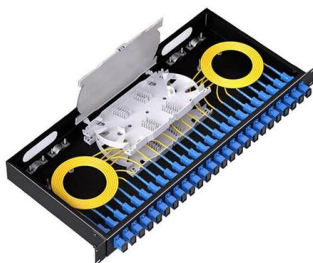


GYXTW Single-Mode Fiber Optic Cable 2/4/6/8/12/16/24 Core

GYXTW Single-Mode Fiber Optic Cable
2/4/6/8/12/16/24 Core Outdoor Aerial/Duct for
Power Station SCADA & Weak Current Systems

Single-Mode Fiber Cable Guide: Types, Specs & Selection

Introduction Fiber optic cables are the backbone of modern telecommunications infrastructure, enabling high-speed data transmission across vast distances with minimal signal loss.



Fiber Optic Cable Types Explained

Single mode and multimode fiber optic cables differ not only in their core diameter but also in the wavelengths of light that they use to transmit data. Single mode



What Is Single Mode Fiber and How Does It Work

Single mode fiber uses a small core to transmit one light path, enabling high-speed, long-distance data with minimal signal loss and low dispersion.



Contact Us

For datasheets, pricing, or custom high-speed optical interconnect solutions, please visit:

<https://www.syropy.com.pl>