

# What is the purpose of an optocoupler on a sensor





## What is the purpose of an optocoupler on a sensor

---



### How Photocouplers / Optocouplers Are Used , Renesas

Photocouplers Use Light from a Light-Emitting Diode to Conduct Current through a Phototransistor Photocouplers (also known as optocouplers) generate light by

### What Is Optocoupler , Opto-coupler Working And

Q: What is the purpose of using an optocoupler?

A: Optocouplers are primarily used for electrical isolation and noise reduction in electronic circuits. They provide



### What Is an Optocoupler , ODG

Learn about optocoupler types, working principles, and applications in microcontrollers, AC control, and automation systems. Improve safety and signal

### Understanding Optocouplers: Principles, Types and

In a simple isolating optocoupler, a single



phototransistor is used at the output stage to detect the light emitted by the LED and convert it back into an



### Optocouplers Selection Guide: Types, Features,

Video credit: myvideoisonutube / CC BY-SA 4.0  
Types Optocoupler types are determined by the type of detector used, as described below. Certain types have



### What Is an Optocoupler , ODG

You can, for example, use an optocoupler in order to read the signal from a sensor that outputs 24V. The choosecoupler converts the sensor output



### What Is an Optocoupler? Working Principle and Uses

This blog aims to dive into what an optocoupler is, explore its working principle, and highlight its various applications in today's technological landscape. What is an Optocoupler?



### Optocoupler : Types and Its Applications



An optocoupler (also known as an optoisolator) is a semiconductor device that transmits an electrical signal between two isolated circuits. An

#### Product Photography



### Understanding Phototransistor Optocouplers

Understanding Phototransistor Optocouplers Content you may also like An optocoupler, also known as photo-coupler or opto-isolator, is a component

### What Is the Primary Purpose of an Optocoupler?

The primary purpose of an optocoupler is to provide electrical isolation between circuits, safeguarding sensitive components, preventing ground loops, and enhancing signal integrity.



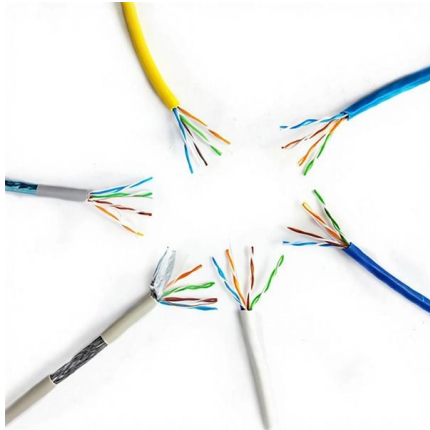
### Everything You Need to Know About Optocouplers in

This optocoupler is widely used in proximity detection, Rotary encoders, and Photo Interrupter sensors. The above is the image and symbol of



## What Is an Optocoupler? Types, Working Principles,

An optocoupler is a tiny part that moves signals between circuits without letting electricity jump across. It uses light to do the job, which helps keep



## What Is An Optocoupler And How Does It Work?

Optocouplers can function here as an interface between sensors and the controller, isolating their signals from interference and ensuring that the readings are

## What Is an Optocoupler and How Does It Work?

The purpose of the optocoupler is to achieve galvanic isolation between different sections of an electronic system. This isolation protects the system by breaking the path for stray currents and



## Optocoupler , Explore Our Workshop , Jameco Electronics

Understand what an optocoupler is and how it works at our electronics workshop at Jameco Electronics. Explore tutorials on how electronic components work today.



## Opto Coupled Devices

& Opto Sensors Optocouplers or opto isolators consisting of a combination of an infrared LED (also IRED or ILED) and an infra red sensitive device such as a photodiode or a phototransistor are widely



## What is Optocoupler and How it works? Its Types and Various

Photo-SCR based optocoupler The photo-SCR based optocoupler is the final common variation, utilizing a silicon-controlled rectifier as its sensor type. Similar to the other optocoupler

## Optocoupler Tutorial and Optocoupler Application

An optocoupler (also called an opto-isolator, photo-coupler, or optical isolator) is a solid-state semiconductor device that transfers electrical signals



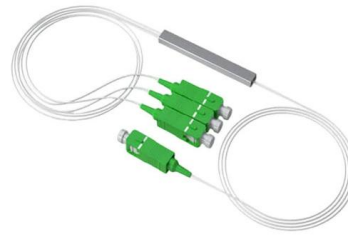
## What is Optocoupler, Working, Types & Applications

The optocoupler is a semiconductor device that converts an electrical signal into two isolated circuits. The optocoupler comes with two parts LED that



### What is an Optocoupler and How to Choose the Right One?

When one side of the optocoupler receives a signal, it turns on a tiny light called an LED, which shines onto a sensor on the other side. Mechanism of Operation The operational mechanism of an



### What is Optocoupler and How it works?

They use light to pass signals between circuits. What is Optocoupler and How It Works As we have already learnt about transistors, an ideal transistor

### What is Optocoupler and How it Works

Optocoupler is an electronic component that has a light source at its input side and a light detector or sensor in its output side. A light source is a LED while the



### Opto-isolator

Schematic diagram of an opto-isolator showing source of light (LED) on the left, dielectric barrier in the center, and sensor (phototransistor) on the right [note 1]



## What is Optocoupler, Working, Types & Applications

Photo-TRIAC Optocoupler Photo-SCR based  
Optocoupler Advantages of Optocoupler  
Disadvantages of Optocoupler Applications of  
optocouplers What

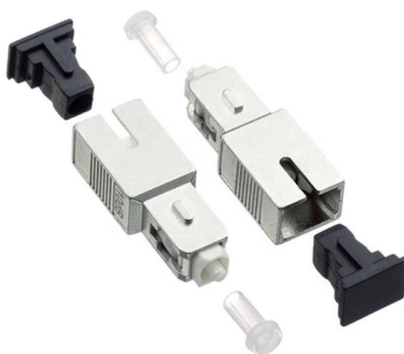
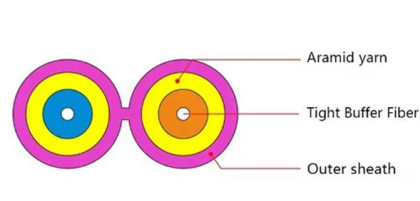


### What Is an Optocoupler? Types, Working Principles,

An optocoupler uses light to transfer signals between circuits, keeping them electrically isolated. This protects sensitive components from high

### Optocoupler Tutorial for Beginners

An optocoupler (or opto-isolator) is a component that transfer signals between circuits using light. In this guide, you'll learn how they work and how you



### What is Optocoupler? How does Optocoupler work?

In this article, what is optocoupler, how optocoupler works and some important specifications of the optocouplers are explained.



## Contact Us

---

For datasheets, pricing, or custom high-speed optical interconnect solutions, please visit:

<https://www.syropy.com.pl>