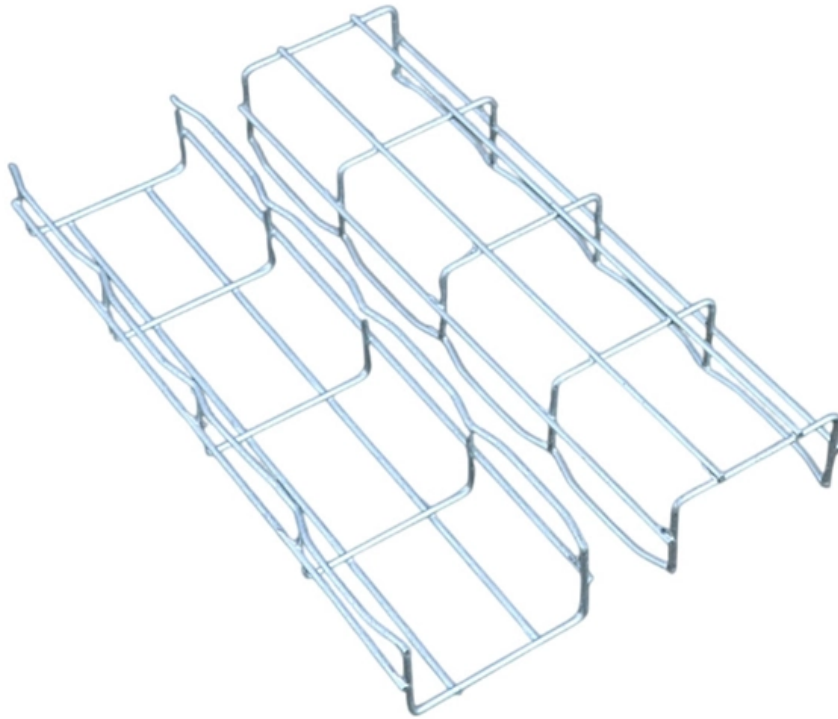


# **What is the normal optical loss for a switch**





## Overview

---

Return loss is the amount of light reflected from a single discontinuity in an optical fiber link such as a connector pair. To be able to judge whether a fiber optic cable plant is good, one does a insertion loss test with a light source and power meter and compares that to an estimate of what is a reasonable loss for that cable plant. Assuming the measured dBm values provided by each switch's SFP are accurate, can you calculate the real-time loss for the fiber link as follows: Switch1->Switch2 Loss (dB) = Switch1 TxPwr - Switch2 RxPwr and Switch2->Switch1 Loss (dB) = Switch2 TxPwr - Switch1 RxPwr Of course, this results in a.



## What is the normal optical loss for a switch

---



### Understanding Fiber-Optic Cable Signal Loss, Attenuation, and

To determine the power budget and power margin needed for fiber-optic connections, you need to understand how signal loss, attenuation, and dispersion affect transmission. The uses

### Optical Loss

Losses in transmitted light through spectrometers are due to absorption, reflection, scattering, and optical misalignment; the losses can vary with temperature and wavelength.



### How do you calculate total optical power loss?

Calculating total optical power loss is a crucial aspect in the field of fiber optics, as it determines the efficiency and performance of optical communication systems.

### Determining Real-time Optical Power Loss using "show interface

Assuming the measured dBm values provided by each switch's SFP are accurate, can you calculate the real-time loss for the fiber link as follows:  
Switch1->Switch2 Loss (dB) = Switch1



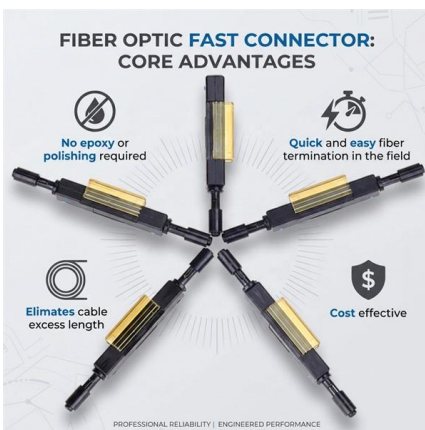
### Optical Switch

Abstract: The optical switch is one of the most important components of an optical network. Microelectromechanical systems (MEMS)-based optical switches have been a popular



### Introduction to Optical Fibers, dB, Attenuation and Measurements

This document is a quick reference to some of the formulas and important information related to optical technologies. This document focuses on decibels (dB), decibels per milliwatt (dBm),



### Typical optical component loss values

The following loss values are typical for optical components used in the data communication industry. Use the manufacturer's loss values if available. Note: Optical loss is not the only consideration in a



## Fibre Optic Cabling Loss Limits Explained - Trend

Learn about fibre optic cabling loss limits & how to calculate them. Gain insights from experts on acceptable loss for cabling projects & explore the



### Optical Loss

Optical loss is defined as the reduction of light intensity in an optical waveguide, quantified in decibels, due to mechanisms such as absorption and scattering. Absorption loss occurs from interactions

### Understanding Losses in Fiber Optic Interconnections

Understanding Losses in Fiber Optic Interconnections Understanding fiber optic losses is valuable in designing and choosing components in a fiber optic communications system. These losses are



SMF(Fiber Type)



### The FOA Reference For Fiber Optics

Optical Power The most basic fiber optic measurement is optical power from the end of a fiber. This measurement is the basis for loss measurements as well as the



## Understanding Fiber Loss: What Is It and How to

Factors causing fiber loss are various, such as intrinsic material absorption, bending, connector loss, etc. Losses in the optical fiber can be



### Accurately measure switch loss

The efficiency of a high quality switching power supply is up to 95%, and most of the loss of switching power supply comes from switching devices

### Connector Loss, Return Loss, and Reflectance - "Highs and Lows"

The condition and characteristics of fiber optic connectors greatly affects the performance of an installed fiber optic link. High connector loss (e.g., insertion loss), low return loss, or high



### What is Return Loss in Optical Transceivers? (RL / Back

Understand optical return loss in transceivers, why it matters for network stability, and how LINK-PP modules deliver high RL performance.



## Mastering Return Loss in Optical Communications

Learn the fundamentals of return loss, its impact on optical networks, and strategies for optimization.

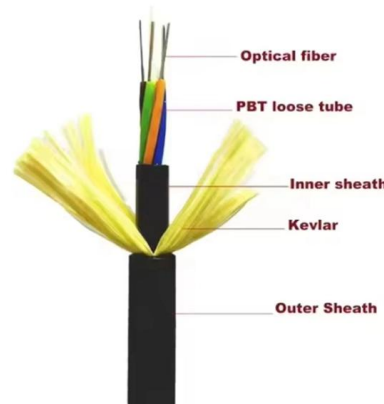


### Understanding Fiber Loss: What Is It and How to

A significant signal loss in the optical fiber can cause unreliable transmission. How can we know the value of losses on the fiber link? Read on,

### Understanding Optical Fiber Link Losses

Attenuation loss or fiber optic attenuation is two terms widely used in the market for representing a different type of fiber loss. By definition fiber loss or attenuation loss is the loss of light between



### Where does optical return loss matter?

Where does optical return loss matter? The polish of a singlemode fiber endface plays a significant role in reflectance. Understand what you need before you specify.

### How to Calculate an Optical Power Budget



## for Industrial

Whether you're an experienced technician or a newcomer to the industrial networks and ethernet switches field, calculating an optic power budget can seem a



### **Demystifying Optical Transceiver Failures: Common**

explores frequent optical transceiver issues and offers practical solutions, and highlight how LINK-PP optical module can mitigate risks.

### **Analysis of the Causes and Influencing Factors of Optical Switch**

Mechanical optical switches (e.g., MEMS): The loss is usually low (can be less than 0.5 dB), mainly due to reflection loss from micromirrors, fiber alignment errors, and beam expansion loss caused by the



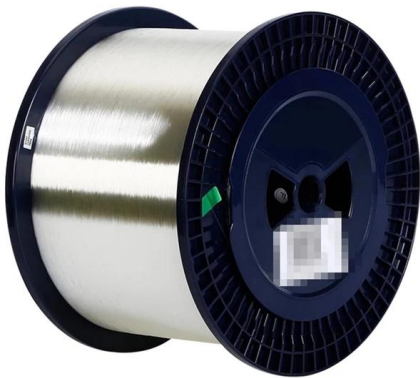
### **Optical Fiber Power Loss and Automatic Power Reduction: A**

Comprehensive guide on optical power loss in fiber optics and Automatic Power Reduction (APR). Learn attenuation causes, formulas, tables, and strategies to reduce fiber loss for



### Connector Loss, Return Loss, and Reflectance - "Highs and Lows"

Optical loss (for connectors), sometimes called attenuation, is simply the reduction of optical power induced by transmission through a medium such as a pair of fiber optic connectors.

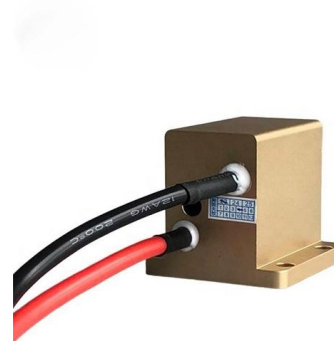


### Guidelines On What Loss To Expect When Testing

Short fiber optic premises cabling networks are generally tested in three ways, connector inspection/cleaning with a microscope, insertion loss testing with a light

### Understanding Fiber Loss: What Is It and How to

What is optical fiber loss? Fiber loss can be also called fiber optic attenuation or attenuation loss, which measures the amount of light loss between



### Optical Link Budget Guide: Formulas & Calculation for 2026 Networks

Optical Link Budget is the maximum allowable signal loss between a transmitter (Tx) and a receiver (Rx) in a fiber optic link. It ensures that the received signal is strong enough for the

### Optical Fiber Power Loss and Automatic Power Reduction: A



Optical power loss (attenuation) refers to the reduction of signal strength as light propagates through fiber. Measured in decibels (dB), loss degrades signal quality, limits distance,



### Optical power loss (attenuation) in fiber access

Light traveling in an optical fiber loses power over distance. The loss of power depends on the wavelength of the light and on the propagating material. For silica

## Contact Us

For datasheets, pricing, or custom high-speed optical interconnect solutions, please visit:  
<https://www.syropy.com.pl>