

What is the function of a miniature laser diode





Overview

A laser diode is a small semiconductor device that emits powerful and precise light using a process known as stimulated emission. These devices are capable of producing an intense laser ray with uniformly sized light waves.



What is the function of a miniature laser diode



Miniature Laser Diode Pumped Nd:YAG Lasers

The output of Gallium Aluminum Arsenide semiconductor diode lasers is very near the strongest pump band of the neodymium ion. Since semiconductor diode lasers can be extremely efficient (slope

Laser Diode

The laser diode was invented by Theodore H. Maiman, an American physicist, and has since become an essential component in countless modern



Laser Diode

What is a Laser Diode? The term LASER stands for Light Amplification by Stimulated Emission of Radiation. A laser diode is a semiconductor-based PN junction device that converts

What Is a Diode Laser and How Does It Work?

Understanding the basic structure of a diode laser is key to comprehending how it functions. The core component of a diode laser is the p-n junction, created by joining p-type and n



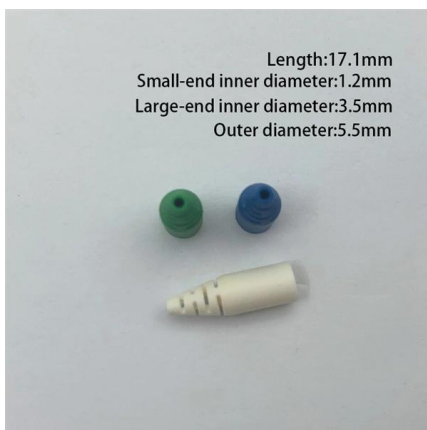
Laser diode function (working of laser diode, laser diode uses)

A laser diode serves the function of emitting coherent light through stimulated emission of photons. It operates similarly to a regular diode but with additional properties that allow it to produce a narrow,



Principle of Operation and Applications of a Laser Diode

Laser diodes emitting visible and infrared light are used to measure range (distance). Laser diodes are also used extensively in parallel processing of



Diode Lasers Explained - Under The Hood Guide

Unlike gas lasers, which dissipate heat over a relatively large volume, diode lasers concentrate heat at a very small physical location. This makes thermal



Laser Diodes: Definition, Types, and Applications

Key learnings: Laser Diode Definition: A laser diode is a semiconductor device that generates coherent light by stimulating electrons to



What Is a Laser Diode? How It Works and Where It's Used

A laser diode is a small semiconductor chip that converts electrical current directly into a focused beam of light. It works on the same basic principle as an LED, but with an internal structure

Laser diode

A laser diode is an optoelectronic device, which converts electrical energy into light energy to produce high-intensity coherent light. In a laser diode, the p-n junction of the semiconductor diode acts as the



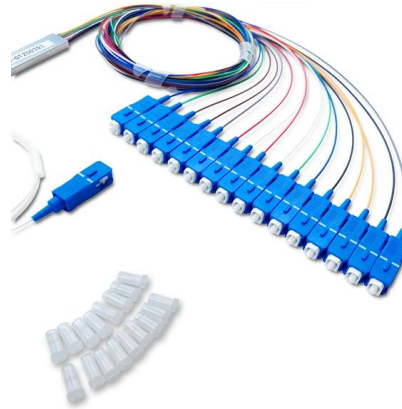
Become an EFDA , DANB

Become an Expanded Functions Dental Assistant
How to become an EFDA Becoming an expanded functions dental assistant is a career goal many dental



Laserdiodes

In contrast to other solid-state or gas lasers, the laser emission is generated by direct electrical injection, which enables the high efficiency and compactness of laser diodes.



Laser Diode: Working Principle, Construction, Types,

A laser diode is a small semiconductor device that emits powerful and precise light using a process known as stimulated emission. These devices are

Laser Diode

A laser diode (LD) is defined as a forward-biased semiconductor diode that emits coherent light when an electrical current stimulates recombination of electrons and holes at the p-n junction.



119444 die 110023 und 108646 der 61406 in 39759 von 37276 zu 36337 das 31769 den 30981 f¼r 29484 ist 26923 mit 24596 im 24129 auf 24121 des 23440 nicht 23371 eine 22483 auch 21975 sich



An Introduction to Laser Diodes

An Introduction to Laser Diodes Learn about the laser diode, including package types, applications, drive circuitry, and some laser diode specifications.



Miniature Lasers

Contents
1 Understanding Miniature Lasers
1.1 Main Reasons for Miniaturization
1.2 Design and Construction
1.3 Diode Lasers and Other Semiconductor Lasers
1.4

Diode Lasers: Definition, How They Work, Types,

Laser diodes are widely used across various industries, including telecommunications, material processing, and medical treatments. This article will



Laser diode

The laser diode chip removed and placed on the eye of a needle for scale A laser diode with the case cut away. The laser diode chip is the small black chip at the



Laser diode

Overview Theory History Types Reliability Applications Common wavelengths Further reading

A laser diode is electrically a PIN diode. The active region of the laser diode is in the intrinsic (I) region, and the carriers (electrons and holes) are pumped into that region from the N and P regions respectively. While initial diode laser research was conducted on simple P-N diodes, all modern lasers use the double-hetero-structure implementation, where the carriers and the photons are confined in order to maximiz

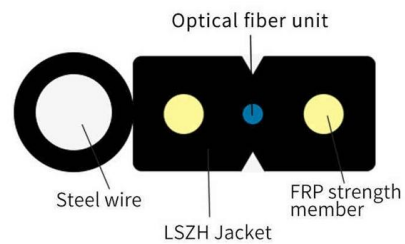


Laser Diode Technology 101: What is it & How it Works

Laser Diode Technology 101: What is it & How it Works Learn about laser diode technology, including history, construction, & applications - everything you need

XLaserlab X1 Pro Laser Welder, Cleaner & Cutter -

The XLaserlab X1 Pro Laser Welder combines four key functions--metal welding, cutting, rust removal, and seam cleaning--into one versatile machine.



Laser Diodes: Definition, Types, and Applications

A laser diode is defined as a diode that can generate laser light when electrically pumped with current. It consists of a p-n junction with an additional



Laser Diode

A laser diode is a semiconductor device that is identical to a light-emitting diode (LED) and converts electrical energy into light. In this article, we'll learn about their development, working,

Length:14.5mm
Small-end inner diameter:2.0mm
Large-end inner diameter:3.5mm
Outer diameter:5.2mm



BYJU'S Online learning Programs For K3, K10, K12,

Laser diodes can produce a narrow beam of laser light in which all the light waves have similar wavelengths. Because of this property, laser beams are very bright



Miniature diode laser , Laser Focus World

A miniature diode-laser module measures 7 mm in diameter and 22 mm long. The casing is made of brass and fitted with a fine internal thread that allows optics to be continuously focused over



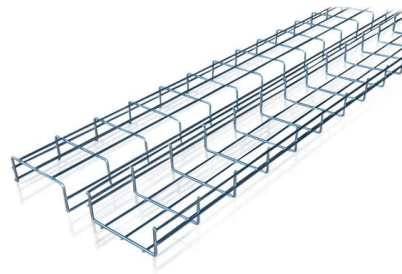
Laser Diode



Laser Diode: Construction, Working, Types, Advantages, Disadvantages & Applications Laser diode similar to LED is used for producing light but the light is

Laser Diode Basics , Springer Nature Link

The basic optical, electrical, and mechanical characteristics and the working principles of laser diodes are summarized. Vendors and distributors for laser diodes, laser diode modules, and



Laser Diode

The result is a feedback process that leads to high temperature and melting of the diode surface and destruction of the laser. When COD occurs, the output power of a laser diode as a function of drive

Diode Lasers: Definition, How They Work, Types,

Diode lasers are compact, making them ideal for portable applications. They can be designed to emit light across a wide range of





Contact Us

For datasheets, pricing, or custom high-speed optical interconnect solutions, please visit:

<https://www.syropy.com.pl>