

What is the function of a high-performance relay protector





Overview

Protective relays and devices have been developed over 100 years ago to provide "lastline" of defense for the electrical systems. They are intended to quickly identify a fault and isolate it so the balance of the system continue to run under normal conditions. Long term cost reduction (TCO) for trainings and maintenance by reduce variety of relays A fast and selective arc fault mitigation for air-insulated LV & MV switchgear and Relion protection and control relays and sensor. It functions as a watchdog by constantly surveying multiple system components including voltage, current, frequency, and phase angle. Its main purpose is to safeguard electrical equipment like transformers, generators, and transmission lines from damage due to.



What is the function of a high-performance relay protector

Protective Relay: Working, Types, and Applications



Protective relays play a crucial role in power system protection, ensuring safety, reliability, and continuity of electrical supply. From traditional

Motor Protection Relay for High Voltage Induction Motor

HT Motor Protection: Motor protection relays for high voltage motors provide protections like thermal overload, short circuit, single phasing, and earth



Definition of Relay Protection

The primary function of relay protection is to detect the presence of faults, such as short circuits, over-currents, over-voltages, under-voltages, and other abnormal conditions, and provide

Understanding Protective Relays in Power Systems

Implementing undervoltage relays ensures that power systems maintain optimal performance and reliability. 32R - Reverse Power Function
The



What is a Protective Relay? , Keltour Controls Inc

In high-voltage transmission and distribution networks, protective relays play a vital role in maintaining the integrity and stability of the system. They detect faults and



Protective Relays: Function, Features & Operation

In other words, the prime function of protective relays is the timely and discriminative clearance of system faults. In practice a particular relay is usually set to ensure that its response is

Types of Electrical Protection Relays or Protective Relays

? Key learnings: Protective Relay Definition: A protective relay is an automatic device that senses abnormal conditions in electrical circuits and



Types of Electrical Protection Relays or Protective Relays

Operating Principles: Protective relays operate by detecting abnormal signals, with specific pickup and reset levels to start or stop their action.



Network Protector Basics: Applications, Operation, and

This guide covers network protector basic operation and maintenance procedures. Photo: TestGuy. Network systems are commonly used in hospitals,

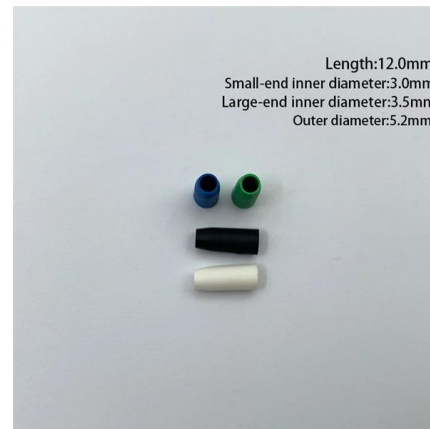


Motor Protection Relay MPR Relay Working Principle

Motor Protection Relay MPR relay is used to protect the induction motor against Over load fault Single phasing Earth fault Bearing failure fault High.

301 Moved Permanently

301 Moved Permanently 301 Moved Permanently nginx



Protective Relaying in High Voltage Networks: Principles and

Protective relaying is the backbone of fault detection and system isolation in high voltage (HV) power networks.



What is a Protective Relay? , Keltour Controls Inc

Protective relays help maintain the integrity of electrical systems and prevent potential hazards, ensuring safe operations in this high-risk industry. Chemical

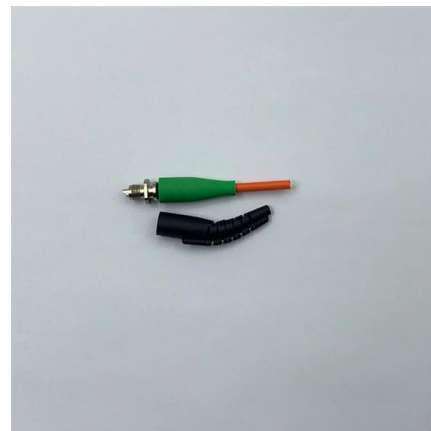


Voltage Protection Relay: Working Principle and Functions

It prevents safety hazards and damage to equipment. It monitors voltage to determine if levels rise too high or dip too low. Many industries use voltage

What is Overload Protector

What are the overload protectors and their function in refrigerators and air conditioners? An overload protector is an electrical device that we use for



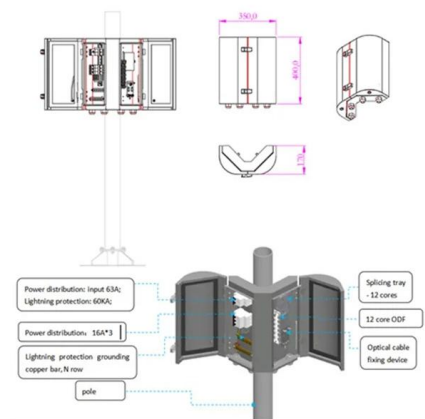
Basic protection relay knowledge

A fast and selective arc fault mitigation for air-insulated LV & MV switchgear and Relion protection and control relays and sensor technology protect staff and plant facilities for many years.



Types of Protective Relays

This article covers various types of protective relays, such as overcurrent, directional, and differential relays, highlighting their operating characteristics and applications



A Complete Guide to Protective Relays and Their Role

Protective relays monitor long-distance high-voltage lines for faults like short circuits or grounding. Quick isolation prevents damage to infrastructure,

Engineering: Network protector

A network protector is a type of electric protective device used in electricity distribution systems. The network protector automatically disconnect its associated distribution transformer from



What is Protection Relay?

Protection relays have a crucial role in maintaining the safety, reliability, and integrity of electric networks. They recognize problems before they become serious. This decreases the



Free Markdown to HTML Converter

Convert your markdown to HTML in one easy step - for free!



Network protector

Thus, the network protector is designed to open its contacts if the relay senses backwards flowing current. However, if there is a fault on the secondary grid, the network protector is not designed to

Contact Us

For datasheets, pricing, or custom high-speed optical interconnect solutions, please visit:
<https://www.syropy.com.pl>