

# **What is the floor-mounted height for the distribution box**





## What is the floor-mounted height for the distribution box

---



### What should the distance be between the floor and the

What should the distance be between the floor and the distribution board or main switch? Find out from our team of experts on Your Questions Answered by

### Matters needing attention in the installation of distribution box!

The bottom of the floor mounted cabinet (box) should be 50 ~ 100 mm higher than the ground; The center height of the operating handle is generally 1.2-1.5m; There are no obstacles within the range



### Optimal Installation Height For Flush-mounted Ukk Splitter Boxes

Standardizing the installation height of electrical components ensures both operational safety and maintenance accessibility. For flush-mounted UKK splitter box units, positioning the lower



### Standard Heights for Electrical Switches

Standard heights of Electrical switch boards and fittings - Free download as PDF File (.pdf), Text File (.txt) or read online for free. This document provides standard



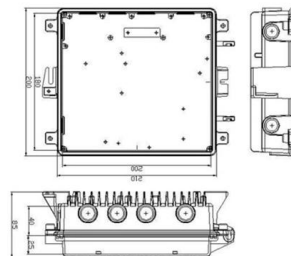
### Electrical Panel Mounting Height Requirements: General

Electrical panel height from floor The dimension for height of working space for equipment operating at 600 volts (V), nominal, or less to ground and likely to



### The installation requirements for the distribution box

In homes, the best height for installation is about 1.5 meters from the floor -- it's easy to reach and out of children's reach. In industrial settings, you



### Floor Distribution Box

Fibernet FTTH Floor distribution box designed to be install on each level of a multi-dwelling unit building for fiber to the home applications. It is the transition point between the riser cable and the horizontal



### What is the installation height of distribution box?

The height of the bottom of the box should not be less than 1.0m from the ground, and measures should be taken to prevent climbing. All the distribution boxes should be good protected

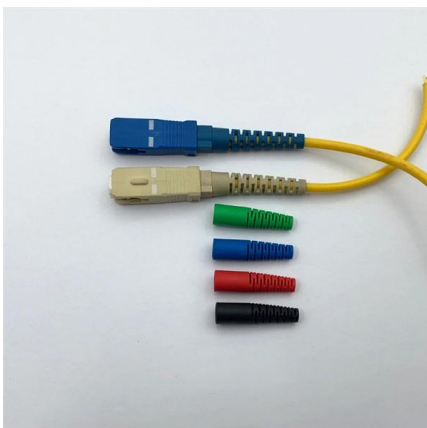


### Size determination, installation method and wiring mode

The distribution box is the central hub of the home circuit and the general control of our daily power consumption. It is an indispensable electrical equipment. If there

### Optimal Height for Installing Electrical Panels: A Detailed Guide

Explore comprehensive insights on the appropriate height for mounting electrical panels, abiding by the NEC standards for



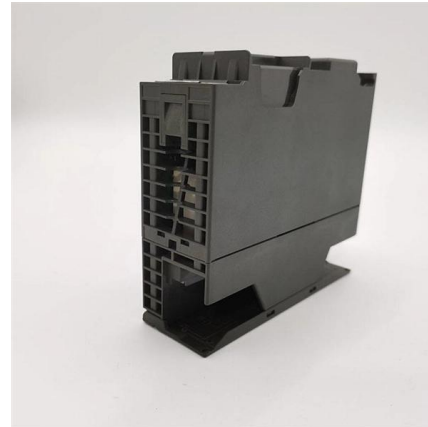
### IEC and BS 7671 Requirements for Consumer Unit and

Residential Settings: In residential environments, the recommended installation height for distribution boards and consumer units ranges from 1 to 1.8 meters



### Standard Heights for Electrical Installations

The document provides guidelines for mounting heights for electrical switch sockets, light switches, and MCB distribution boards. It specifies the heights for different



### Requirements And Specifications For Installation Of

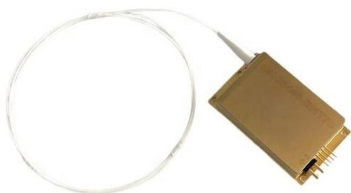
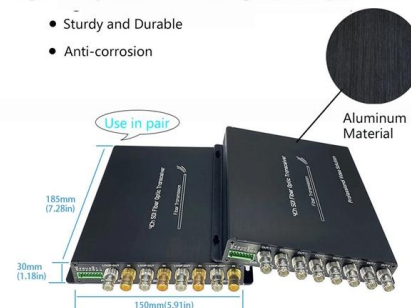
Installation height and fixing method?: The bottom edge of the distribution box is usually between 1.5 meters and 1.8 meters above the ground,

### Embedded Installation Of Distribution Box

According to the installation size of wall mounted (surface mounted) terminal combination electrical appliances, first drill bolt holes or embedded wood bricks, then open the upper cover of the

High Quality Aluminum Housing with Compact Size

- Sturdy and Durable
- Anti-corrosion



### Wall-Mounted vs Floor-Mounted Distribution Boxes

Choosing between wall-mounted vs floor-mounted distribution boxes can have a big effect on the safety, economy, and bottom line of your project. This guide helps you compare both choices



### What is the code minimum height for an electrical panel?

But there is a maximum height allowed for an electrical panel, which is based on the height of the highest breaker switch in the panel. It's set at 6'-7" above the floor, with an exception



### Installation height specifications for distribution boxes

When wall-mounted, they should be installed in dry, well-ventilated locations that are easy to access; when floor-mounted, the back panel must be at least 0.5 meters above the ground, with additional

### Installation requirements for distribution boxes

Distribution boxes shall be made of non-combustible materials; open distribution boards may be installed in production places and offices with low electric shock risk; enclosed cabinets shall



### Box Mounting Height and Location

Box Mounting Height and Location Custom Search



## What is the Ideal Installation Height for a Distribution Box

The proper installation of a distribution box involves placing it at the right height to ensure safety and convenience. Mounting it 4.5 to 5.5 feet (1.4 to 1.7 meters) high



## GUIDELINES FOR USE OF POLE MOUNTED OR PAD/PLINTH MOUNTED DISTRIBUTION

As per CEA (Technical Standards for Construction of Electrical Plants and Electric Lines) Regulations, the mounting of distribution transformers shall be as per relevant Indian Standards IS 1180 and as

## Wall-Mounted vs. Floor-Mounted Distribution Boxes:

Compare wall-mounted vs. floor-mounted distribution boxes. Learn their key differences, uses, pros & cons to choose the right one for your space



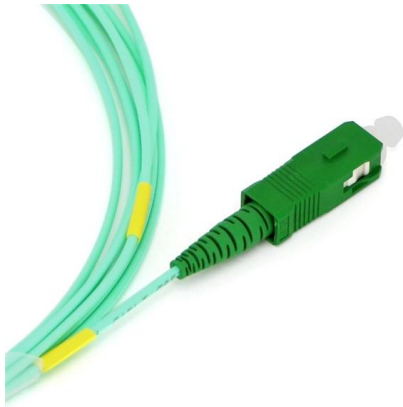
## Wall-Mounted vs. Floor-Mounted Distribution Boxes: Which One

Compare wall-mounted vs. floor-mounted distribution boxes. Learn their key differences, uses, pros & cons to choose the right one for your space and needs.



### **Main panel minimum height from floor?**

What's the minimum height requirement for a main distribution panel. I don't believe there is one in the code but you can narrate safety concerns, Steve.



### **NEC Requirements for Panelboards and Load Centers**

NEC Requirements for Electric Main Panelboards and Working Space Depth and Mounting Height. Width, Depth and Height for Panels - NEC 110.26

## **Contact Us**

---

For datasheets, pricing, or custom high-speed optical interconnect solutions, please visit:  
<https://www.syropy.com.pl>