

What is the capacity ratio of cable trays





Overview

Cable tray fill capacity is governed by electrical codes (typically NEC Article 392) which limit cable fill to 40-50% of tray cross-sectional area for safety and heat dissipation. The following formula is used to calculate the cable tray capacity: Variables: To calculate the cable tray capacity, multiply the width and height of the cable tray. Consult NEC Article 392 for specific fill allowances based on voltage and cable type. What is cable tray fill ratio and why is it important?

Cable tray fill ratio represents the percentage of cross-sectional area occupied by cables, crucial for ensuring proper heat dissipation, preventing overheating, and maintaining electrical safety standards.



What is the capacity ratio of cable trays



How Many Cables Can a Cable Tray Hold? A

How Many Cables Can a Cable Tray Hold? A Comprehensive Guide During the design of a cable management system, one of the most important

Cable Tray Fill Calculator

To calculate the fill ratio, divide the sum of the cross-sectional areas of all cables by the total usable cross-sectional area of the cable tray. Multiply the result by 100 to express it as a percentage.



High Corrosion Resistant China FRP Cable Trays for Industry

Materials Used for China FRP Cable Tray
Fiberglass Reinforced Plastic (FRP) cable trays are engineered solutions widely used in industrial, commercial, and infrastructure projects for supporting

A Guide to Cable Tray Accessories and Their Functions

Explore a detailed guide to cable tray accessories and understand their uses in ensuring safety, stability, and efficiency in electrical system



Huijue engineering specific Fiber optic

HJ GROUP offers a wide variety of product types for you to choose from.



Cable Tray Sizing Guidelines

This document provides guidelines for sizing cable trays. Cable trays should be sized based on the current and future expected cable load, cable type, and allowable

Top 5 Cable Tray Manufacturers in North America

Find the leading cable tray manufacturers in North America, with insights into top companies, compliance standards, and essential factors for choosing the right



Cable Tray Roll Former Machine: The Complete Guider 2026

A cable tray roll former machine is a continuous metal forming system that produces cable trays from metal strips, typically in gauges ranging from 1.0mm to 3.0mm thickness. The machine



Cable Tray Sizing Calculator , IEC 61537 & NEC 392 Guide

Use this cable tray sizing calculator to check fill %, select tray size, and comply with IEC 61537 & NEC 392 with formulas, example and checklist.



Cable Tray Fill Calculator

Easily calculate the fill ratio and load capacity of cable trays with our Cable Tray Fill Calculator. Ensure safety, efficiency, and compliance with industry

Free Cable Tray Sizing Calculator -- IEC, AS/NZS, NEC, BS

Calculate cable tray fill ratio, weight loading, and derating factors for multi-standard compliance. This calculator features an interactive interface with advanced visualizations. Open the full calculator for



Ordering information

MG	1	2	3	4	5	6
Model	SP2M1	SP2M2	SP2M3	SP2M4	SP2M5	SP2M6
Product name	Patch Panel	Patch Panel	Patch Panel	Patch Panel	Patch Panel	Patch Panel
Illustration						
MG	1	2	4	1	2	4
Maximum number of ports	144	288	576	144	288	576
Product size (including product and packaging)	482.8*202*74 (mm)	482.8*202*781 (mm)	482.8*202*177 (mm)	482.8*202*74 (mm)	482.8*202*781 (mm)	482.8*202*177 (mm)
Standard color code	RAL9005	RAL9005	RAL9005	RAL9005	RAL9005	RAL9005
Inventory	2	2	2	2	2	2

Cable Tray Fill Calculator

The fill capacity of a cable tray refers to the maximum amount of space that can be occupied by cables while maintaining proper ventilation and accessibility, typically expressed as a percentage of the



Cable Tray Capacity Calculator

To calculate the cable tray capacity, multiply the width and height of the cable tray to find the total area, then multiply by the fill ratio. Divide this by the

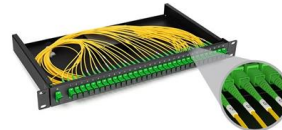


Cable Tray Technical Guide A practical guide to product selection and

Cable Tray Technical Guide A practical guide to product selection and installation This guide for engineers and installers has been developed by ABB as a practical reference regarding cable tray

Cable Tray Fill Calculator: Sizing for NEC/IEC

Standard NEC (National Electrical Code) Rule: Generally, you should not exceed a 40% to 50% fill ratio for control and signal cables. Our calculator



Cable tray fill ratio calculator

Free cable tray fill ratio calculator. Determine maximum cable capacity, fill ratios & thermal performance. Meets international electrical standards.

Cable Tray Size Calculation for Project

Cable tray size calculation is important for ensuring safe cable installation, proper heat dissipation, and enough spare capacity for future



Cable Tray Sizing and Fill Capacity Calculator

Calculate cable tray sizing and fill capacity based on tray dimensions, cable diameter, number of cables, and maximum fill percentage per electrical code.



Free Cable Tray Fill Calculator , NEC & IEC Compliant Sizing , Shielden

Easily calculate cable tray fill ratios with our free tool. Supports mixed cable sizes, NEC 40% rules, and metric/imperial units. Download your PDF report instantly.



- ✓ Slow Axis Aligned (0°) - for standard sensing applications
- ✓ Fast Axis Aligned (90°) - for special modulation applications
- ✓ 45° Axis Aligned - for depolarizer applications



Wire Basket Cable Tray Routing System

The Wire Basket Overhead Cable Tray System from Panduit maximizes space and network performance while ensuring cable protection for data center managers.



Cable Tray Size and Dimensions: How to Choose the

Learn how to calculate the perfect cable tray size and dimensions for your electrical project. This guide covers load capacity, fill ratios, and industry



Cable Tray Fill Calculator: Sizing for NEC/IEC

Ensure your cable runs meet NEC safety standards with our Cable Tray Fill Calculator. Calculate fill ratios for CAT6, Power, and Fiber cables to

Tray and Ladder Sizing by Cable Capacity Calculator - IEC

Calculate tray and ladder sizes by cable capacity with our IEC-compliant calculator for efficient and accurate electrical installations.



Cable Tray Capacity Calculator

This table serves as a general guide for estimating cable tray capacity based on common tray sizes and cable diameters. Users can adjust the values



Cost of Fiber Optic Cable: Pricing Guide (2026)

Discover the cost of fiber optic cable in this pricing guide. Learn material prices, installation factors, and what impacts total project costs overall.



Cable Tray Fill Calculator & Formula Online Calculator Ultra

The Cable Tray Fill Calculator helps in determining the percentage of space occupied by cables within a cable tray, which is essential for ensuring safety, efficient cable management, and compliance with



Free Cable Tray Sizing Calculator -- IEC, AS/NZS, NEC, BS

Size cable trays for fill ratio, weight capacity, and conductor grouping. Supports IEC 61537, AS/NZS 3000, NEC 392, and BS 7671 standards.



Contact Us

For datasheets, pricing, or custom high-speed optical interconnect solutions, please visit:

<https://www.syropy.com.pl>