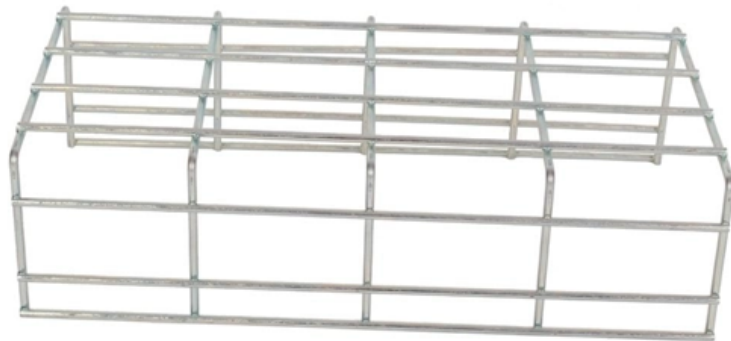


What is the architecture of an AI server





What is the architecture of an AI server



What is Microsoft Fabric

Microsoft Fabric is an all-in-one analytics solution that covers everything from data movement to data science, real-time analytics, and business

Overview of MCP servers in Azure API Management

Learn how Azure API Management enables secure, scalable access to remote MCP servers for AI agents, including architecture and management

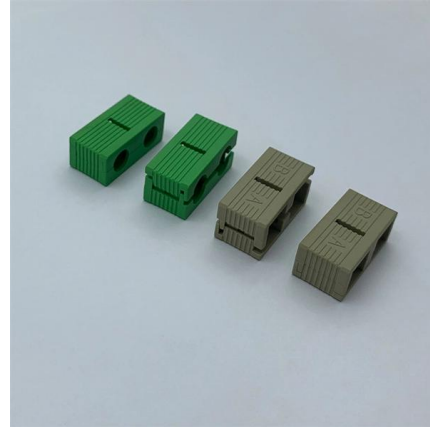


What is an AI Server? GPU, Hardware, Network and Price

An AI server isn't a special type of computer; it's a high-performance bare metal server with a carefully balanced architecture, engineered specifically to eliminate the bottlenecks that cripple

The Role of Artificial Intelligence in Digital Transformation

If you want to help shape your organization's digital transformation strategy, here's an overview of AI's role in it.



Artificial Intelligence (AI) Servers - Intel

Explore key considerations for AI servers and how to design them to support AI workloads optimally.

Best Practices , ServiceNow

Explore ServiceNow's best practices to optimize processes, enhance performance, and improve user experience.



What is an AI server?

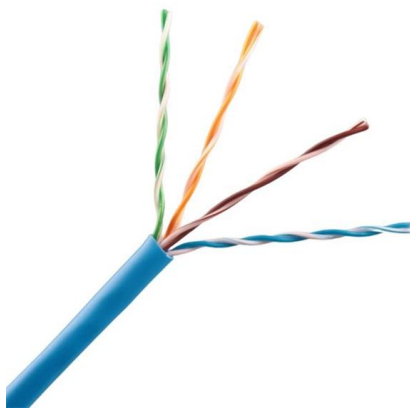
AI servers are built for massive parallelization, repeatedly executing the same mathematical operations across enormous datasets. An AI server executes workloads by coordinating compute, memory,





AI Infrastructure Layering Guide: Compute, Interconnects, Data

Learn how AI infrastructure works across four layers: compute and memory, packaging and interconnects, data centers and power, and inference services and governance. Understand the



The Architectural Flaw at the Core of Anthropic's MCP

Anthropic design choice Exposes 150M+ Downloads and up to 200K Servers to complete takeover The OX Security Research team has uncovered a critical, systemic vulnerability at the core

I built a self-hosted AI agent that runs as a system service and

Neo Posted on May 15 I built a self-hosted AI agent that runs as a system service and controls Android over ADB -- here's the architecture #opensource #ai #productivity #agents About



What is Model Context Protocol (MCP)?

Model context protocol (MCP) serves as a standardization layer for AI applications to communicate effectively with external services such as tools,



OpenAI Publishes Codex App Server Architecture for

OpenAI has recently published a detailed architecture description of the Codex App Server, a bidirectional protocol that decouples the Codex coding



Best MCP Gateways and AI Agent Security Tools (2026)

As AI agents evolve from simple chatbots to autonomous systems managing critical business operations, two infrastructure layers have emerged as

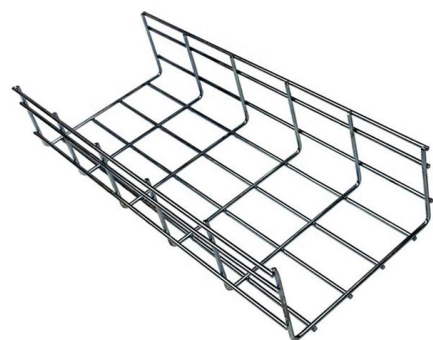
What Is Azure Local? Overview and Key Benefits

Learn how Azure Local accelerates cloud and AI innovation by delivering applications, workloads, and services from cloud to edge with Azure Arc as the control plane.

Integrated Aluminum Alloy Die Casting



Durable and Secure Metal Screws



AI's memory chip shortage is quietly taxing the entire

AI's insatiable appetite for memory chips is crowding out all other buyers -- and the consequences will ripple through every industry and household.



Introduction to Azure AI Search

Azure AI Search is a fully managed, cloud-hosted service that connects your data to AI. The service unifies access to enterprise and web



AI Servers: Hardware, Workloads, and Deployment Options

AI servers appear to be normal servers on the outside, but are designed quite differently on the inside. The architecture enables fast transmission of large data volumes, efficient parallel

What is three-tier architecture?

Benefits of three-tier architecture Again, the chief benefit of three-tier architecture is its logical and physical separation of functionality. Each tier can run on a separate



What is an AI server?

The architecture of an AI server is distinct from that of a traditional server. It prioritises parallel processing capabilities to handle multiple tasks simultaneously,



AI Infrastructure: What It Is and Why It Matters for Modern AI

Learn what AI infrastructure is, how it powers modern AI systems, and why scalable compute, storage, networking, and deployment tools are essential for AI development.



HPE announces industry's first 100% fanless direct liquid

HPE has pioneered direct liquid cooling, the most effective way to cool next-generation AI systems. 100% fanless direct liquid cooling systems architecture for

What is the cloud? , Learning Center

What is the cloud? "The cloud" refers to servers that are accessed over the Internet, and the software and databases that run on those servers. Cloud servers are



8 Ways AI Agents Are Evolving in 2026

An AI agent's behavior is often less about how you ask a question than the information and context it has at hand to formulate an answer. Designing the information architecture around the



Microsoft 365 Copilot Vs Copilot Studio Licensing , Microsoft

Microsoft 365 Copilot This space is for open, peer-to-peer discussion about Microsoft 365 Copilot. Ask questions, share ideas, and connect with others exploring, deploying, enabling, or using

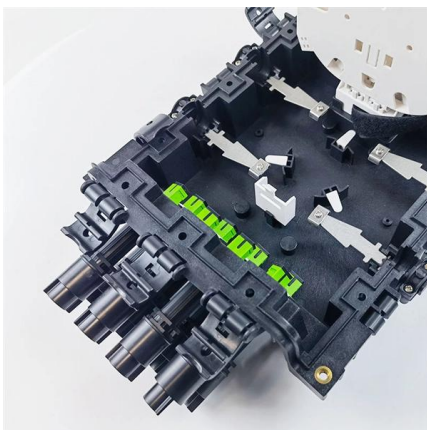


A Jargon-Free Guide on How AI Server Architecture Works

Whether you're deploying AI in your business, tinkering with a project, or just want to understand the tech shaping our world, this guide discusses what

What Is an AI Server and How Does It Work?

Learn how AI servers work, what hardware they need, and how to choose the right setup for training, inference, and MLOps workloads



Accelerate AI & Machine Learning Workflows , NVIDIA

NVIDIA Run:ai accelerates AI and machine learning operations by addressing key infrastructure challenges through dynamic resource allocation, comprehensive AI



Contact Us

For datasheets, pricing, or custom high-speed optical interconnect solutions,
please visit:

<https://www.syropy.com.pl>