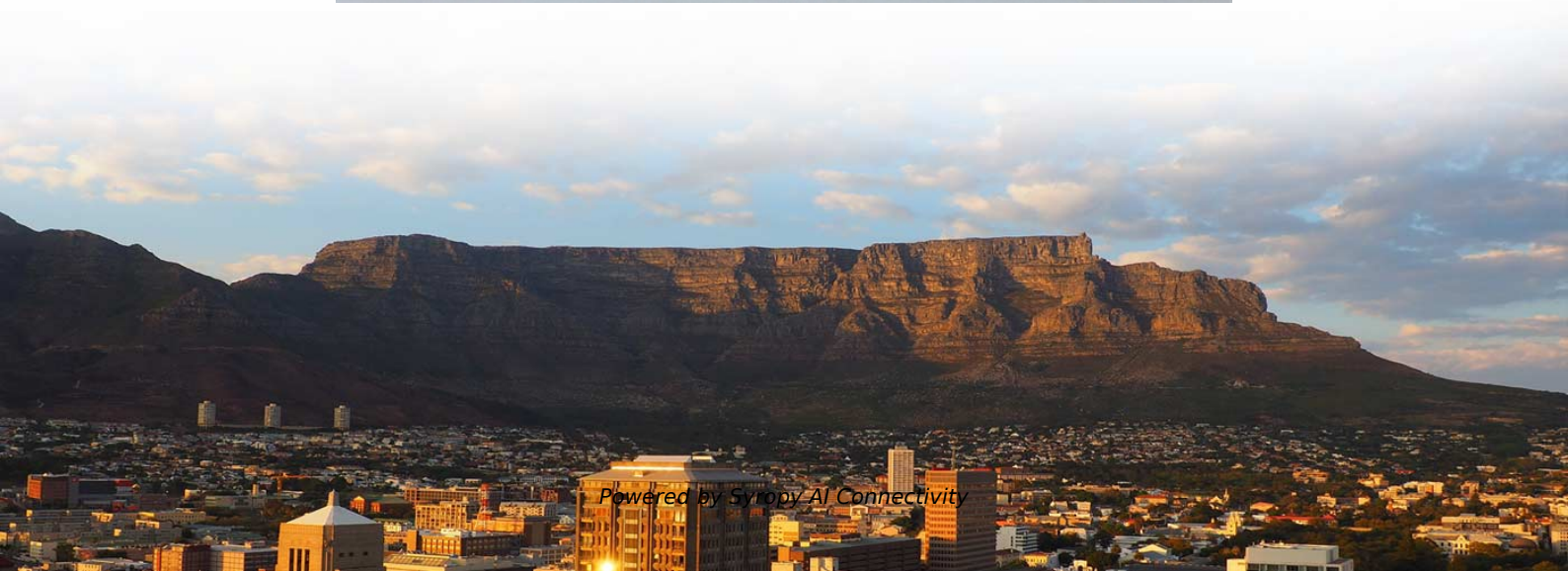


What is the FC interface used for





What is the FC interface used for



Fibre Channel Layers

FC-1 layer performs functions such as flow control, data link error detection and correction, and buffer-to-buffer flow control. It also provides data



FC Connector Explained

The FC Connector offers a durable, threaded design for secure fiber optic connections. It is cost-effective and supports high-speed data transmission.

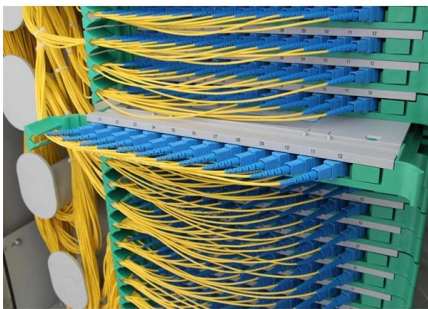
What is the world wide web?

Learn about the world wide web and how the internet began with this KS2 primary computing guide from BBC Bitesize for years 3 and 4.



What Is a User Interface (UI)? , Definition from TechTarget

What is a user interface (UI)? The user interface (UI) is the point of human-computer interaction and communication in a device. This can include



FCP (Fibre Channel Protocol)

Fibre Channel Protocol (FCP) is the SCSI (Small Computer System Interface) interface protocol operating on an established Fibre Channel

Fibre Channel (FC) vs Ethernet Cards: Differences

In the fields of networking and data storage, two key components play a crucial role: Ethernet cards and Fiber Channel (FC) cards. Understanding the



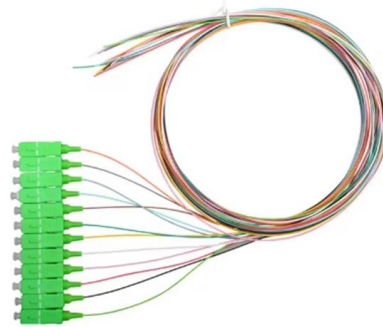
The 4 Best Free Tools to Analyze Hard Drive Space on

WinDirStat is a strong contender for the best storage space analysis software. Its interface allows you to see exactly what's using space on your hard



What is Fibre Channel? History, layers, components and

Fibre Channel is a high-speed networking technology primarily used for transmitting data among data centers, computer servers, switches and



Google

Checking your browser before accessing undefined Click here if you are not automatically redirected after 5 seconds. Checking your browser - reCAPTCHA

What Is an Application? , Definition from TechTarget

An application is a computer software package that performs a specific function for an end user or another application based on carefully



Pre-Terminated Patch Panel

- Standard 19" width
- Max 144 fibers in 1U
- MPO/Fusion Dual-Purpose



Removable Cable Management Tray



Transparent Front Cover



High-Quality Mated Cable Core

USB 3.2 and 3.1 Explained: What's Gen 1, Gen 2 and

Ultra Ethernet: The data-center interconnection of tomorrow detailed There's also a lesser-used version called USB 3.2 Gen 1x2, which is 10 Gbps and



What is JTAG and how can I make use of it?

JTAG / boundary scan significantly reduces such development costs because it provides a simplified interface to control the IO pins used to interact with



drone-swarm-rs/doc/fc-autopilot-interface-investigation.md at main

Verdict: Not suitable for FC<->autopilot control, but useful for GCS integration (already used in this project).

The Difference Between Ethernet Cards and Fibre Channel (FC)

In the world of networking and data storage, two key components play pivotal roles: Ethernet cards and Fibre Channel (FC) cards. Understanding the differences between these two



What is a SAN switch? How it works and compares to

SAN switches are mainly of two types: FC SAN switches and Ethernet SAN switches. As a result, they can facilitate device connections and





Understanding Fibre Channel , Junos OS , Juniper Networks

Fibre Channel (FC) is a serial I/O interconnect network technology capable of supporting multiple protocols. It is used primarily for storage area networks (SANs). The committee standardizing FC is



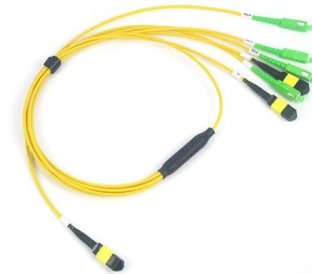
Fibre Channel (FC) protocols

Fibre Channel (FC) protocols are communication standards used primarily in Storage Area Networks (SANs) for high-speed data transfer between servers and storage devices.



What is an API (Application Programming Interface)

APIs, or Application Programming Interfaces, are the invisible backbone of modern software development. They enable applications and



131U6984 Call Now, Fast Shipping! , VLT FC 302 Automation Drives

The Danfoss 131U6984 is part of the VLT FC 302 Automation Drives series and provides a power rating of 2.2 kW (3.0 HP) with three phase power. It features IP20 chassis protection and comes with a



Fundamentals of Fibre Channel

Fibre Channel is a high-speed network technology used to connect server to data storage area network. It handles high performance of disk storage



What is a USB Port and How Can You Use It?

A USB port is a standard cable connection interface used in electronics for short-distance digital communications and data transfer.

Fibre Channel

The most prominent fibre channel standard is fibre channel arbitrated loop (FC-AL), which was designed for new mass storage devices and other peripheral devices that require very high



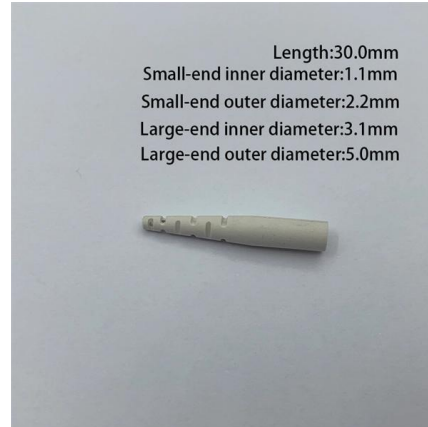
Storage Networking 101: Understanding Fibre Channel

FC-AL is mostly relegated to niche uses now, including but not limited to internal disk array communications and internal storage for high-end servers. FC switches can be connected any way



Support

A virtual fibre channel (VFC) interface is a logical interface manually created on an FCF switch to simulate the functionality of a physical FC interface. To use a VFC interface, bind it to a physical



Google

Google apps. Google Images. Sign in. Images. Advanced Image Search: Advertising Business Solutions About Google © 2026 - Privacy - Terms. Google apps

Fibre Channel Protocol

Fibre Channel Protocol (FCP) is the SCSI interface protocol utilising an underlying Fibre Channel connection. The Fibre Channel standards define a high-speed data transfer mechanism that can be



Contact Us

For datasheets, pricing, or custom high-speed optical interconnect solutions, please visit:

<https://www.syropy.com.pl>