

What is an ODF fiber optic bracket





Overview

An Optical Distribution Frame (ODF), also known as a fiber optic patch panel, is a specialized hardware unit that centralizes fiber optic cable connections. Acting as a "traffic hub" for light signals, an ODF: Organizes incoming and outgoing fiber cables. It ensures fiber management is structured, minimizes signal loss, and provides accessibility for maintenance and future expansion. As data centers, enterprises, telecom operators, and smart-building infrastructures deploy increasingly dense fiber links, ODFs provide the structured.



What is an ODF fiber optic bracket



Optical Distribution Frames (ODF)

Explore optical distribution frames (ODF) with efficient distributed chassis solutions at CommScope

Optical Distribution Frame (ODF): High-Density Rack

An Optical Distribution Frame (ODF), also known as fiber distribution frame or optical fiber distribution frame, is the central cross-connect and termination hub in fiber



Patch Panels: A Complete Guide

Fiber optic patch panels support different fiber optic cables, beginning at OM1, through OM5, with the higher number cables offering greater



Everything You Need to Know About the ODF Optical

The Optical Distribution Frame (ODF) serves as the backbone of sophisticated telecommunication and data center ecosystems, aiding in efficient



What is ODF (Optical Fiber Distribution Frame)?

An Optical Fiber Distribution Frame (ODF) centralizes fiber connections, ensures protection, and streamlines network management for

Fiber Optic Cable, Clamps, Boxes, for FTTH

JERA LINE-China Factory produce high-quality fiber optic cables, fiber cable clamps, and fiber optic boxes for outdoor & Indoor FTTH. ISO 9001 certified.



What is an Optical Distribution Frame?

An Optical Distribution Frame (ODF) is a key piece of fiber optic communications equipment. It is used for the termination, distribution, and



Fiber Optic Color Code: The Ultimate TIA-598-C Guide

Master the TIA-598-C fiber optic color code standard. Read our complete guide and use our free interactive calculator to easily identify 1-144 core cables.

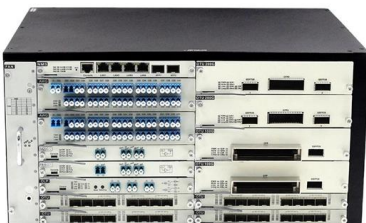


Guide to Optical Distribution Frames (ODFs)

What Is an ODF? An Optical Distribution Frame (ODF) is a dedicated unit designed to organize, terminate, and interconnect fiber optic cables. It brings

Fiber Optic Cable Hardware

Fiber Optic Hardware Aerialgrip® hardware products offer a complete solution of pole hardware, for FTTH and outside plant applications, making for an effortless installation, saving time and money.



Optical Distribution Frame: Purpose, types and applications explained

An Optical Distribution Frame is a specially designed enclosure used to manage, organise, connect and protect fibre optic cables. ODFs are typically installed in data centres,



Types of Optical Distribution Frames (ODF) for Fiber Management

Optical Distribution Frames (ODF) are indispensable for organizing and protecting fiber optic networks, with types ranging from compact wall-mounted units to high-density rack-mounted



What is a network interface card (NIC)?

Fiber optics. Some NICs use fiber optic cables to connect nodes to networks. These NICs may be used as a high-speed support system for network

What are Optical Distribution Frames

An Optical Distribution Frame (ODF) is a cable rack that organizes fiber optic cable connections and terminations. Its primary function is to provide a



ODF Explained: Types, Architecture, Management

An Optical Distribution Frame (ODF) is the central hub for fiber splicing, termination, patching, and cable protection in modern optical networks.

Optical Distribution Frame (ODF): What It Is, How It Works, and Why It



Defining the Optical Distribution Frame (ODF) An Optical Distribution Frame (ODF), also known as a fiber optic patch panel, is a specialized hardware unit that centralizes fiber optic cable connections.



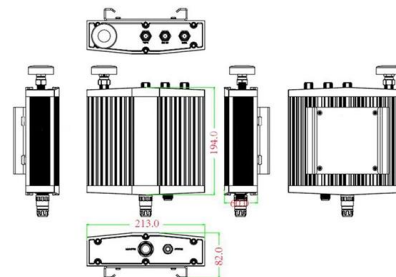
What is an Optical Distribution Frame (ODF) and How to

An ODF, or Optical Distribution Frame, which is also known as a fiber optic patch panel, is a kind of structure that comprises components for fiber

Sensor Fiber-Optic Adapters , Power Sensor Accessories and Spares

A mounting bracket may be needed to mount fibers to sensors. See the compatibility table below to select an adapter bracket and fiber adapter for your sensor.

Mechanical drawing



Basics of Optical Distribution Frame (ODF)

Optical Distribution Frame (ODF) is a critical component of fiber optic networks that provides a centralized point for terminating, splicing, and managing



4-Core Single mode Fiber Optic Cable

4-Core Single mode Fiber Optic Cable also called 4-core Optical fiber cable, is a type of communications optical cable which has the same transmission speed as



Fiber Optic Distribution Frame (ODF) , Rack & Wall Mount

Fiber optic distribution frame (ODF), also known as fiber patch panel or optical distribution frame, is a rack-mount or wall-mount enclosure that provides organized termination, splicing, and patching of

Optical Distribution Frame (ODF): The Complete Guide for Fiber

Q1: What is the difference between an ODF and a patch panel? An ODF is the entire frame or cabinet managing fiber connections, while a patch panel is a modular unit inside the ODF



Optical Distribution Frame (ODF) Guide: Smart Choices

An Optical Distribution Frame (ODF) is a metal unit that organizes fiber optic connections. It's where incoming and outgoing cables meet. It does



Optical Distribution Frames (ODF) for Central Office/Headend

The ODF serves as the flexibility point to make connections between all types of active communication equipment hosted inside the facility, and fiber optic cable used to connect other network locations. An

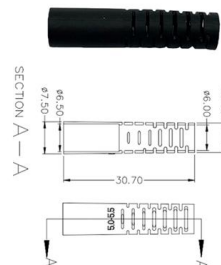


Shimeyao 10 Pcs Wire Mesh Cable Tray Ceiling Hanging Hook

Shimeyao 10 Pcs Wire Mesh Cable Tray Ceiling Hanging Hook, Basket Tray Ceiling Support Hang Bracket, Galvanized Steel Hanging Hook for Network, Fiber Optic, Cabling Accessory

24 Port Optical Distribution Frame ODF

24 Port Optical Distribution Frame ODF, Excellent cost control, far exceeding the sales volume of peers, this is a product loved by customers.



What is Optical Distribution Frame in Telecom Networking

An Optical Distribution Frame (ODF) is the central hub of your fiber optic network. It manages the connection, splicing, and distribution of optical



How to Choose Optical Distribution Frame , by Orenda

Functions of ODF ODF is mainly used for fiber optic terminal splicing, fiber optic connector installation, optical path adjusting, excess pigtail storage and



Contact Us

For datasheets, pricing, or custom high-speed optical interconnect solutions,
please visit:
<https://www.syropy.com.pl>