

What is a reverse optical cable





Overview

MTP®/MPO Type B Cable: Type B cable (reversed cable) uses key up connectors on both ends. Polarity in fiber optic networks refers to the alignment of transmit (Tx) and receive (Rx) signals between interconnected devices. This principle becomes more complex when dealing with multi-fiber MPO (Multi-Fiber Push-On) connectors, which typically house 12, 24, or even 48 fibers in a single.



What is a reverse optical cable



Fiber-optic cable

A fiber-optic cable, also known as an optical-fiber cable, is an assembly similar to an electrical cable but containing one or more optical fibers that are used to carry

Uniboot LC Reverse Polarity Cable

The Uniboot LC Reverse Polarity Cable design allows a single cable to transmit two fibers simultaneously, reducing cable congestion during cabling and for high



Digital Audio Cable Explained: Guide About Optical Cables

Digital Audio Cable Explained: A quick guide to optical cables, how they work, and why they're ideal for high-quality sound in home audio and entertainment systems.

Standard ADSS Fiber Optic Cable

AFL's ADSS (All-Dielectric Self-Supporting) fiber optic cable is designed for aerial installation without the need for messenger wire. Lightweight, non-metallic, and



Mastering Polarity Reversal in Pre-terminated Fiber Cable System

There are three common fiber polarities in optical wiring: polarity type A/B and C. Maintaining correct polarity is crucial for fiber optical connectivity. Using different fiber optical cables



What is MTP®/MPO Fiber Polarity and Do You Know

It uses an MTP®/MPO Type B cable with full fiber array reversal, which naturally aligns transmit (Tx) and receive (Rx) fibers across the link. This



SC connector X 12

Fiber Polarity: Everything you Need to Know

A fiber-optic link can function only if Tx on one end is connected to Rx on the other, and vice versa; this is accomplished by creating a fiber polarity flip

Fiber Polarity: Everything you Need to Know



Successful installation of a fiber-optic network employing multi-fiber push on (MPO) cables and connectors relies on several considerations, one of



OFC 2026 Exhibit Connects the Global Optical Ecosystem Powering

12 February 2026 OFC 2026 Exhibit Connects the Global Optical Ecosystem Powering AI-Era Data Centers and Networks More than 700 industry-leading companies to spotlight the technologies

How to cross-over Fiber Cables?

Why cross-over Fiber Cables? Occasionally, there will be instances in which you need to cross over fiber optics cables. The reasons may vary, but at



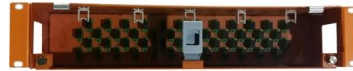
The FOA Reference For Fiber Optics

Since most fiber optic links use two fibers transmitting in opposite directions to create a full duplex link, you need to ensure that transmitters are connected to receivers



FACT SHEET:ERN REVERSED OPTICAL NODE

Description The Electroline Reversed optical Node (ERN) is a ruggedized compact Forward optical transmitter and reverse optical receiver designed to convert CATV RF signals to optical. The optical



Fiber Polarity Basics for Duplex Applications

Fiber polarity is the direction that light signals travel from one end of a fiber optic cable (link) to the other. A link's transmit signal (Tx) must match its corresponding receiver (Rx) at the other

What Is the Optical Audio Port, and When Should I Use It?

The one standout in home audio/video market is the optical audio cable. Unlike other cabling standards, the optical audio system uses fiber optic



ONT What is it and how is it used in a fiber network?

Learn what an ONT is, how it connects fiber Internet to your home, and what to use instead if you have cable Internet. Explore fiber vs. cable options here.



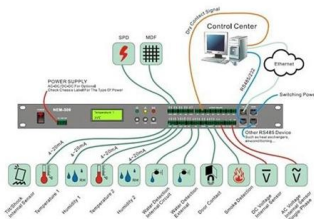
Single-Photon Avalanche Diode (SPADs) , MEETOPTICS Academy

Learn more about optics and photonics See more resources Single-Photon Avalanche Diode (SPADs) In this article Single photon detection What is a Single-Photon Avalanche Diode (SPAD)? What are the



4 basic 'how-to' rules of fiber polarity , Cabling

In this blog, we explain how to implement fiber polarity systems using pre-terminated fiber optic cabling - regardless of end-user requirements



Cable Access Procedures for Opti-Core Fiber Optic Outside Plant Reverse

This instruction manual is a step-by-step guide for end and mid-span access of outside plant reverse oscillating lay (ROL) cable, including sheath removal, core preparation, and fiber preparation. Local



Fiber Polarity Reversed? : r/networking

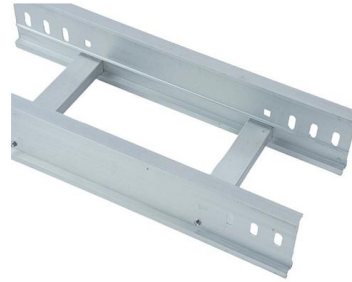
All was installed by a predecessor. The fiber cables that come off the core switch stack and go to the fiber distribution box in the server room are marked as reverse polarity. The fiber cabling that goes

The Ultimate Fiber Optic Cable Size



Reference Chart

Using a fiber size chart simplifies cable selection and ensures compliance with industry standards (TIA, ISO, ITU-T). Why Fiber Optic Size



MPO Polarity Explained: Type A, B, and C With Use Cases

Learn how MPO polarity works and explore the differences between Type A, B, and C. This guide covers trunk vs breakout applications, real-world

005b-CROSSED-Reverse-pair-positioning

CROSSED (i.e. reverse-pair positioning) is when Fibers are installed 1 n on one end, but on the other end, each pair is crossed behind the patch panel. Then the



Fiber Optic Polarity 101: A-B Polarity

When a connection occurs between adapters in the same keyway orientation, the multifiber colors (blue, orange, green, brown, etc.), will remain the same on each



Polarity Basics

Polarity Basics What is Polarity in Fiber Optic Networks? Polarity in fiber optic networks refers to the alignment of transmit (Tx) and receive (Rx) signals



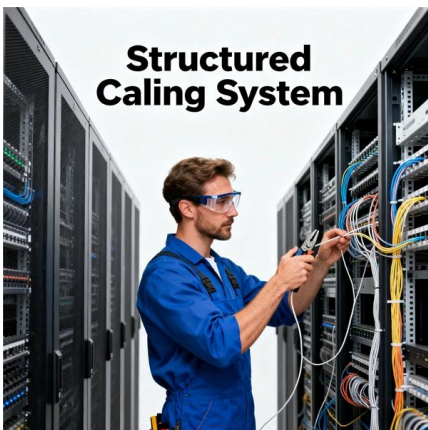
How to Reverse Polarity on LC

This instructional video shows how to reverse polarity on WB Networks LC - LC Push & Pull Tab Duplex Uniboot Fibre Optic Patch Cords. Every fibre optic cable assembly supplied by WBT is made using



Fiber Polarity Basics for Duplex Applications

Method B uses Type B reversed MPO trunk cables with key-up connectors on both ends, so that the fiber located in Position 1 (Tx) arrives at Position 12 (Rx) at the other end.



MTP/MPO Fiber Cable Polarity /How to Understand It

Struggling with MTP/MPO polarity? Discover the right way to understand and configure fiber cables for error-free, high-speed data center



Fiber-optic communication

Optical fiber is used by telecommunications companies to transmit telephone signals, Internet communication and cable television signals. It is also used in other



Contact Us

For datasheets, pricing, or custom high-speed optical interconnect solutions, please visit:
<https://www.syropy.com.pl>