

What is a relay protection module





Overview

The module includes a relay and extra parts that help protect your circuits and keep them separate. Long term cost reduction (TCO) for trainings and maintenance by reduce variety of relays A fast and selective arc fault mitigation for air-insulated LV & MV switchgear and Relion protection and control relays and sensor. It enables a low-power supply circuit to switch on or regulate a high-power supply circuit without integrating it with the same circuit or electrical appliance. A protective relay is an intelligent electrical device designed to detect faults in power systems and initiate corrective actions such as tripping a circuit breaker. It functions as a watchdog by constantly surveying multiple system components including voltage, current, frequency, and phase angle.



What is a relay protection module



Schneider Electric RUM241P7 Relay Protection Module

"This Harmony RUM RC circuit has a control coil voltage of 110V to 240V AC." "It is compatible with RPZ sockets with 3, 4 changeover contacts and RUZ sockets

RC Absorption/Snubber Circuit Module Relay Contact Protection

RC Absorption/Snubber Circuit Module Relay Contact Protection Resistance Surge RC Absorption/Snubber Circuit Module Relay Contact Protection Resistance Surge RC absorption circuit



What is Protection Relay?

A protection relay is a crucial component of electrical systems that safeguard infrastructure, employees, and equipment from electric problems and malfunctions. It functions as a

Relay Module: A Complete Guide - PCB COPY

Protection Components Relay modules often include protection components such as diodes and resistors to guard against voltage spikes and



Relay Module: A Complete Guide

Introduction to Relay Modules A relay module is an essential component in electronic systems that enables the control of high-power devices

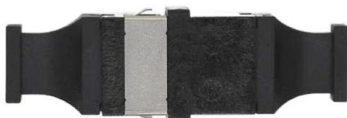
Time-delay Relays , Electromechanical Relays

Time-delay relays can be constructed to delay armature motion on coil energization, de-energization, or both. Time-delay relay contacts must be specified not only as



Relay Module Guide: Types, Working, & Applications -

Learn how relay modules work, their different types, and common applications. This guide covers everything from basics to advanced usage.





Understanding Relay Modules: A Comprehensive Guide to

Relay modules emerged as humble but essential components bridging the gap between control circuits and high power loads. These multifunctional devices play a key role in a variety of



- ✓ Slow Axis Aligned (0°) - for standard sensing applications
- ✓ Fast Axis Aligned (90°) - for special modulation applications
- ✓ 45° Axis Aligned - for depolarizer applications

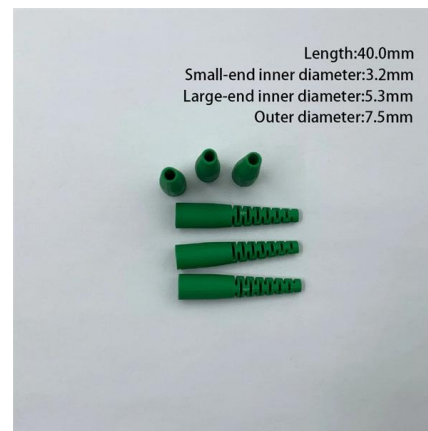


5V 16 Channel Relay Module with Optocoupler Protection Low

IN STOCK: best prices on 5V 16 Channel Relay Module with Optocoupler Protection Low Level Trigger, STYM0512-GS08851.

Relay Module: What It Is and How It Works?

These modules maintain their contact state after removing the coil power by using a permanent magnet or mechanical latching. They only require a momentary pulse to change state



Exploring Relay Modules: Definition, Functions and

Exploring Relay Modules: Definition, Key Functions, and Operating Principles Relay Modules are basic parts in different electrical circuits that play



12V AC Current Detection Relay Protection Module

The module supports up to 5A protection and features COM, NO, and NC relay terminals for flexible circuit control. With compact mounting dimensions and wide temperature tolerance, it is ideal for



What is a Relay Module & How Does It Work

The module includes a relay and extra parts that help protect your circuits and keep them separate. You use a relay module when you want to turn

What is a Protective Relay? , Keltour Controls Inc

Transformer protection relays are specialized relays that provide comprehensive protection for transformers. They monitor parameters like current, voltage,



What is Protection Relay?

A protection relay is a crucial component of electrical systems that safeguard infrastructure, employees, and equipment from electric problems and





What is a Relay Module & How Does It Work? (Types

Relay Module vs. Relay It is also important to note the difference between a relay vs. a relay module. A relay is a single device with an



Good Bntai Slim Relay Module Protection Circuit 6a Relay 12vdc

Shop Good Bntai Slim Relay Module Protection Circuit 6a Relay 12vdc at best prices at Desertcart UK. FREE Delivery Across UK. EASY Returns & Exchange.



Protective relay

Electromechanical protective relays at a hydroelectric generating plant. The relays are in round glass cases. The rectangular devices are test connection blocks,



Exploring Relay Modules: Definition, Functions and

Relay Modules are basic parts in different electrical circuits that play important roles in interfacing low power control circuits and large power loads.

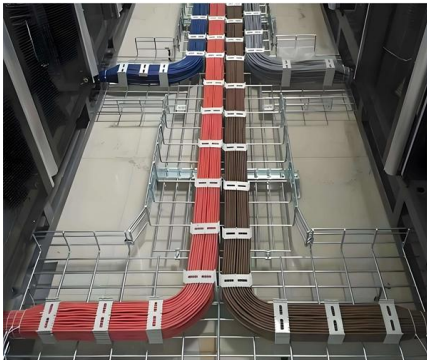


Relay Module Meaning, Function, and Uses



Explained

So, while a relay handles switching alone, a relay module provides built-in protection, power regulation, and easy wiring for industrial and home



Protective Relay Basics

Provides protection, logic, and metering. All-in-one solution. Combines protection, sensors, control power, and circuit breaker in a single package. Typically added to a breaker close circuit to prevent

HONEYWELL,FF-SRS59252,Safety Relay Module

DescriptionThe HONEYWELL FF-SRS59252 Safety Relay Module is a dual-channel safety relay developed for emergency stop and safety interlock applications in industrial automation, ensuring



AC Current Detection Sensor Module 12V Relay Protection Module 5A

1iUtilize Current Transformer: The module uses current transformer to collect AC signals to realize relay signal output after overcurrent in the range of 0?5A. 2iStable Operation: The relay is closed when



Power System Protective Relays: Principles & Practices

Protective relays and devices have been developed over 100 years ago to provide "lastline" of defense for the electrical systems. They are intended to quickly identify a fault and isolate it so the balance of



Basic protection relay knowledge

A fast and selective arc fault mitigation for air-insulated LV & MV switchgear and Relion protection and control relays and sensor technology protect staff and plant facilities for many years.

Relay Module: A Complete Guide

What is a Relay Module? A relay module is an electrically operated switch that allows you to control a high-current circuit with a low-current signal. It consists of an



All Products , Schneider Electric India

Ranges: 2 Motor starters are key electromechanical switches. They start and stop motors, providing overload Contactors and Protection Relays Ranges: 37 A power contactor is an electrical device



A Deep Dive into Relay Module Types

A comprehensive guide to relay module types: from SPST to DPDT, 1-channel to 16-channel, and 3.3V to 24V. Find the perfect module for home automation and industrial control.



Protective Relay: Working, Types, and Applications

A protective relay is an intelligent electrical device designed to detect faults in power systems and initiate corrective actions such as tripping a circuit

Contact Us

For datasheets, pricing, or custom high-speed optical interconnect solutions, please visit:
<https://www.syropy.com.pl>