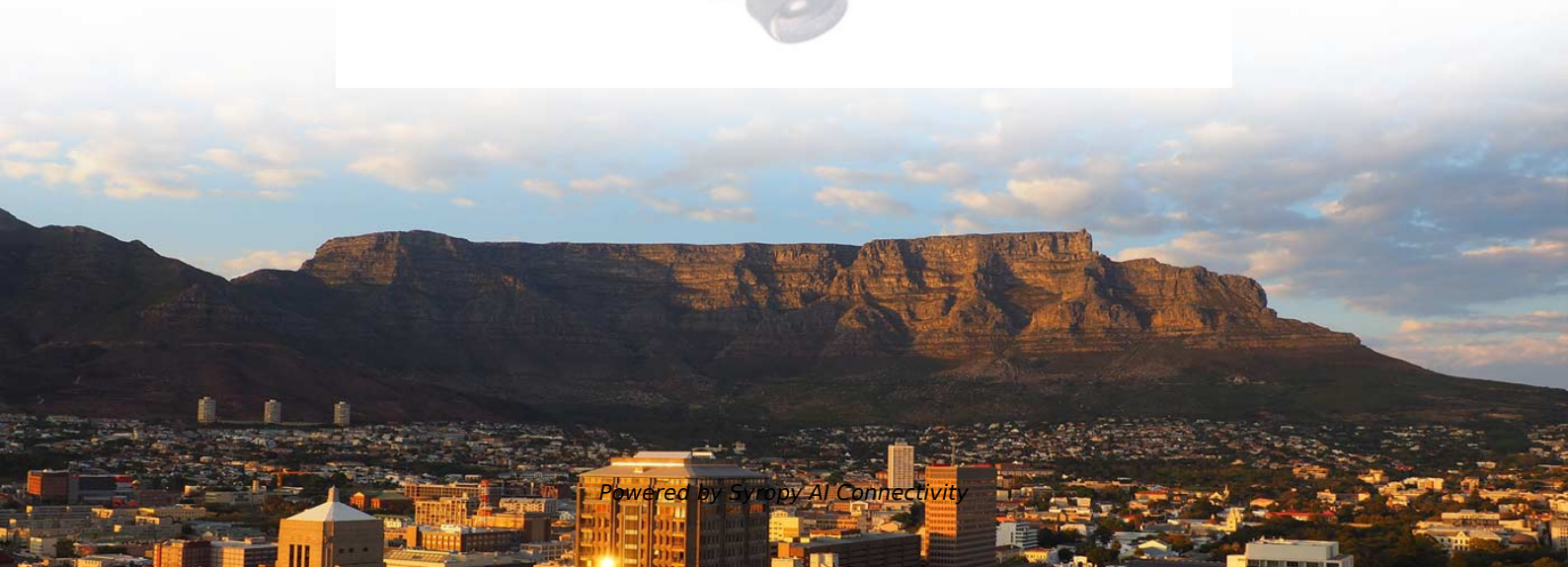


What is a commonly used household electrical distribution box





Overview

A residential distribution box is compact, user-friendly, and designed for typical household currents. ☐☐ Quick Answer: An electrical distribution box is a metal enclosure that houses circuit breakers or fuses, distributing incoming electrical power to individual circuits while providing overcurrent protection and a safe disconnection point for maintenance. Think of them as traffic controllers for power—they direct energy where it needs to go while protecting against overloads or. Whether you're working on a residential building, a commercial facility, or a large industrial plant, understanding the.



What is a commonly used household electrical distribution box



Understanding Distribution Boxes: A Comprehensive Guide

Distribution box What Is a Distribution Box Used For A distribution box is used to receive electrical power from a main supply and distribute it to

Distribution Boxes Explained: Types, Functions, and

A distribution boxes is an essential device that safely and efficiently distributes electrical power to different areas within a building or facility. It is



Understanding Distribution Boxes:A Comprehensive Guide

A distribution boxes is an essential device that manages the safe and efficient flow of electrical power throughout different areas of a building or facility.

What is a Distribution Box? - A Comprehensive Guide

A distribution box organizes and controls power flow, ensuring safety and efficiency in electrical systems.



Focus creates quality products

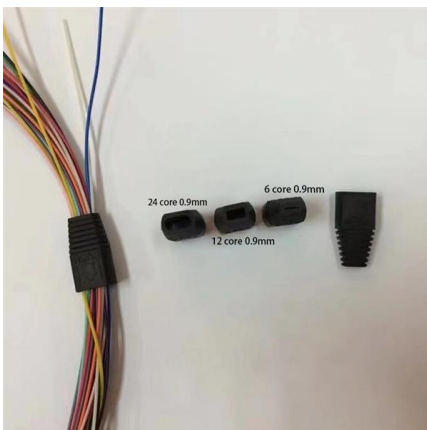


Understanding Distribution Boxes: Your Guide to Power

A: A single-phase distribution box is used to distribute power for residential applications, while a three-phase distribution box is typically used in

Power Distribution Boxes Explained Simply

Learn what a power distribution box is, how it works, key components, types, and why it's vital for safe and efficient electrical systems.



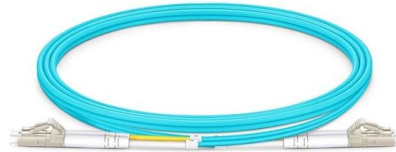
Understanding Distribution Boxes: Your Guide to Power

What are Distribution Boxes and Their Importance? What are Distribution Boxes and Their Importance? Distribution boxes, or electrical junction



What is the Function of a Distribution Box in Electrical Systems

The distribution box plays a crucial function in the distribution box of electrical systems. It helps electricity move safely to different circuits, ensuring that power is utilized efficiently. This box protects



Distribution Boxes Explained: Types, Functions, and

A distribution box--often referred to as a distribution panel or board--is a cabinet that houses electrical parts responsible for delivering electricity to

A comprehensive understanding of distribution box

? Introduction Distribution boxes are at the heart of safe and organized electrical systems--whether in residential, commercial, or industrial settings. But



Electrical Distribution Box: Complete Panel Types Guide 2025

Learn what an electrical distribution box is in simple terms. Complete guide to panel types, NEC 408 requirements, and applications for home and commercial use.



Power Distribution Box Essentials: Functions, Types

7) Considerations for choosing a power distribution box The context, security needs, and purpose all play a vital role in deciding a power distribution

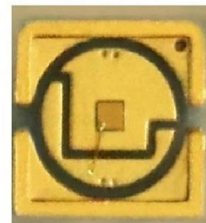


What is an Electrical Distribution Box? A

An electrical distribution box is often called the control hub of a building's electrical system, and for good reason. It's where power from the main

The Complete Guide to Distribution Box: Installation, Types & More

A distribution box, also known as a distribution board, electrical panel, or breaker box, is an enclosure that houses electrical components responsible for distributing electricity throughout a



Power Distribution Boxes Explained Simply

Where Power Distribution Boxes Are Used Power distribution boxes are essential in many settings, from homes to hospitals. Here's a look at some



What Is a Distribution Box?

Distribution boxes are commonly used in residential and commercial electrical systems. Also known as a distribution board, it's responsible for



Understanding Distribution Boxes: A Comprehensive Guide

Distribution box What Is a Distribution Box Used For A distribution box is used to receive electrical power from a main supply and distribute it to multiple branch circuits in a safe and

Understanding Your House's Electrical Panel: A Visual

Understanding the electrical panel in your house is essential for homeowners to ensure the safety and functionality of their electrical systems. The electrical panel,



The Ultimate Guide to Distribution Box Types

Discover the key types of distribution boxes with NUOMAK's comprehensive guide. Learn about Main Distribution Boards (MDB), Consumer Units, Transfer



The Complete Guide to Distribution Box: Installation, Types & More

Blog The Complete Guide to Distribution Box: Installation, Types & More By Admin Aug 2, 2025
No Comments # distribution box Introduction
Electrical systems power our homes, offices, and



How to Choose a Home Distribution Box - Expert Guide

Old electrical boxes are dangerous and often trip. This causes stress and can lead to house fires. You need a modern home distribution box to keep your family safe.

Electrical Distribution Box: Complete Panel Types Guide

Learn what an electrical distribution box is in simple terms. Complete guide to panel types, NEC 408 requirements, and applications for home and



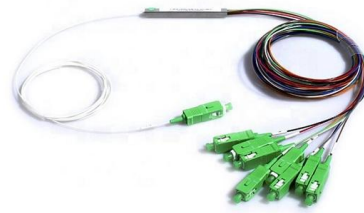
12 Types of Electrical Boxes and How to Choose

Learn about the many common types of wall and ceiling electrical boxes for switches, outlets, light fixtures, ceiling fans, and junction boxes.



Distribution Boxes: Types and Functions

A distribution box (distribution board/DB box) distributes incoming power to multiple circuits and typically houses protective devices such as



Distribution Boxes: Types and Functions

Learn what an electrical distribution box (DB/distribution board) is, its main components (MCB/RCCB/RCBO, SPD, busbar) and common types.

DB BOX (Electrical Distribution Box): Everything You

They are commonly used in homes, small businesses, and light industrial settings to safely distribute power to lighting, appliances, and small



Complete Guide For Distribution Boxes Types

Distribution boxes, also known as electrical distribution boards or panels, are pivotal components in electrical systems, ensuring the safe and organized distribution of



12 types of distribution boxes and how to choose them

Key Factors in Choosing a Distribution Box
Building Type and Size: Start with where it's going. For homes, a residential or flush-mounted box might suffice, but large spaces need sub-distribution



Contact Us

For datasheets, pricing, or custom high-speed optical interconnect solutions, please visit:
<https://www.syropy.com.pl>