

What interface does the FC controller use





Overview

The USB interface allows connection between the FC and its configurator enabling the user to modify and change the the boards settings including the rates, PID's, receiver configuration, failsafe setup and flight modes. Onboard FC adapters and some FC expansion adapter cards can be individually configured as either initiators or targets ports. The FC Bus terminal block is a blue, removable, 4-pin terminal block that fits into a board-mounted pin header. When configured as a Fibre Channel over Ethernet (FCoE)-FC gateway, the QFX3500 switch supports the transport of native FC traffic between FC switches and the gateway's native FC interfaces. Only the QFX3500 switch has native FC ports and supports native FC connection to the SAN. It processes data from various sensors, runs complex algorithms, and makes hundreds of adjustments per second to keep your drone stable and responsive. The Flight Controller also connects to a radio receiver chip (RX) and accepts control input from the pilot who is flying the drone.



What interface does the FC controller use



4.3 Overview of Fibre Channel (FC) SAN Protocol

The FC architecture represents true channel and network integration and captures some of the benefits of both channel and network technology. FC protocol

Flight Controller Explained: How to Choose the Best FC

Learn everything you need to know about flight controllers in this comprehensive guide. Understand how they work, what features to look for, and



Crackhead/pass.txt at master · moimikey/Crackhead ·

How to create a web form cracker in under 15 minutes. - moimikey/Crackhead

Configure FC adapters

Only one network interface (LIF) can be assigned to the port after it is configured for direct attachment. The port can support the FC protocol or the FC-NVMe



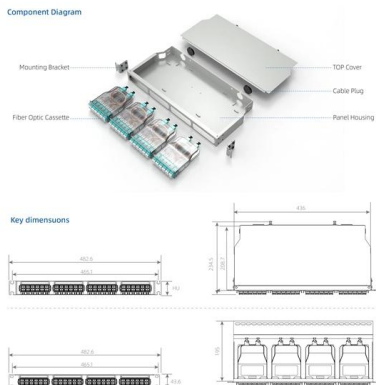
Support

A virtual fibre channel (VFC) interface is a logical interface manually created on an FCF switch to simulate the functionality of a physical FC interface. To use a VFC interface, bind it to a physical



FC Bus terminal block (or N2 protocol as required) on CGM controllers

The FC Bus terminal block is a blue, removable, 4-pin terminal block that fits into a board-mounted pin header. When connecting the CGM to the FC Bus, wire the bus terminal blocks on the



Understanding Fibre Channel , Junos OS , Juniper Networks

The gateway provides FCoE devices on the Ethernet network access to the FC network without requiring the FC switches in the SAN to support Ethernet interfaces. The gateway is not an FCF and



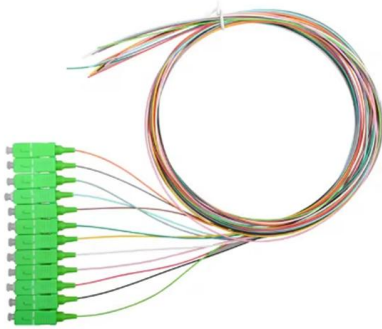
Drone Controller Guide - Understanding The Hardware

Commonly known as FC, a drone flight controller is dubbed the heart of any quadcopter. It is responsible for controlling almost all onboard electrical



Flight Controller

The Flight Controller also connects to a radio receiver chip (RX) and accepts control input from the pilot who is flying the drone. It uses these radio signals from the RX to determine the way the pilot wants



FPV Drone Flight Controllers Latest Version 2026

Learn about FPV drone flight controllers in 2026. Compare F1, F3, F4, F7, and H7 boards, understand features, and choose the best FC.



Flight Controller

Flight Controller The "brain" of everything A flight controller (a.k.a FC) is the brain of the aircraft. It is basically a circuit board that has built-in sensors that detects





Fibre Channel Layers

Fibre Channel FC-0 Overview : Fibre Channel (FC) is a high-speed data transfer technology used for storage area networks (SANs). FC-0 refers to

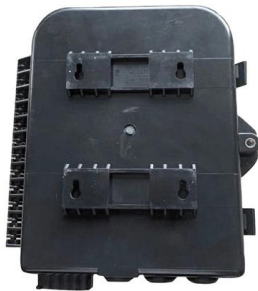


Drone Flight Controllers: A Comprehensive Guide , Grepow

This article delves into the workings of drone flight controllers, how unmanned aircraft are controlled, and key differences between related

Understanding FC Adapter HBA Drivers Under Linux

Overview This document offers a general overview of the SCSI subsystem, including the SCSI protocol, Fibre Channel (FC) and Host Bus



Fibre Channel Controller: A Key Component in Modern

Fibre Channel (FC) technology, a high-speed network technology, is primarily used in data centers and SANs to provide fast, low-latency connections between



Configuring a Flight Controller , HC Robo

Whether you're a seasoned drone enthusiast or a beginner, configuring the flight controller can be a challenging part of your DIY drone build.



Siemens S7 TIA Portal

There does seem to be slight variations in some PLC manufacturers in the difference between FC (FUN) & FB (FUN BLOCK), in the case of Siemens I suggest you read this it may



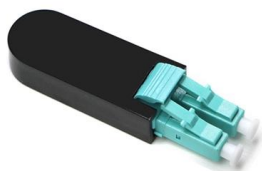
Flight Controllers explained for everyone.

The flight controller uses the data gathered by the sensors to calculate the desired speed for each of the four motors. The flight controller sends this desired speed



Understanding FCoE-FC Gateway Functions

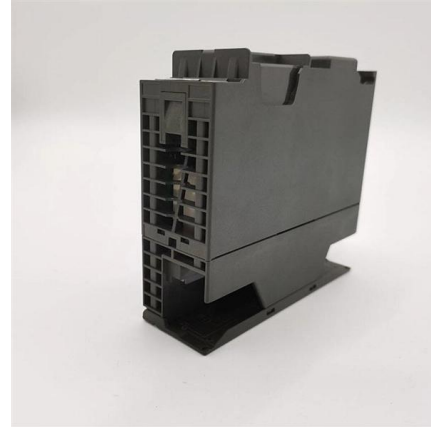
Each of the native FC interfaces on the gateway performs a fabric login (FLOGI) to the FC switch when each interface initializes. This establishes the link between each gateway FC interface and the FC





What Are the Main Functions of a Flight Controller in FPV Drones?

In most standard FPV drone builds, the flight controller can be upgraded or replaced, depending on the specific needs of the pilot. For instance, if a pilot desires more processing power or better handling of



Storage Networking 101: Understanding Fibre Channel

Fibre Channel, or FC, is the underpinning of all SAN technologies these days, as it won the protocol war roughly 25 years ago. FC wouldn't be much use without something on top of it, namely SCSI. FC is

All you need to know about FPV drone Flight Controller

The flight controller (FC) receives and transmits information to and from the user/pilot and other circuit boards on the drone.



Drone Flight Controllers: Principles and Operation

The flight controller (FC) is the brain of your FPV drone, translating your control inputs into the precise motor commands



cs-178-project/imdb.vocab at main · apmalani/cs-178-project

Contribute to apmalani/cs-178-project development by creating an account on GitHub.



Understanding Interfaces on an FCoE-FC Gateway , Junos OS

One or two blocks of six proxy N_Port (NP_Port) interfaces to connect to FC switch fabric ports (F_Ports). Each FC fabric is local to the gateway on which you configure it.



What are Flight Controllers (FCs)?

What Is a Flight Controller? At its core, a flight controller is like the conductor of an aerial symphony. It resides on a circuit board, brimming with



Flight Controller

Flight Controller (FC) This is arguably one of the most critical parts of the drone. This is a piece of hardware that forms the heart of the drone. The FC is basically a mini computer that manages the



All About Multirotor Drone FPV Flight Controllers

The USB interface allows connection between the FC and its configurator enabling the user to modify and change the the boards settings



Understanding Fibre Channel , Junos OS , Juniper Networks

When FC switches support FCoE, they present virtual FC interfaces in the form of virtual F_Ports (VF_Ports) to the FCoE nodes (ENodes) on FCoE devices. A VF_Port is an endpoint in a virtual

Contact Us

For datasheets, pricing, or custom high-speed optical interconnect solutions, please visit:

<https://www.syropy.com.pl>