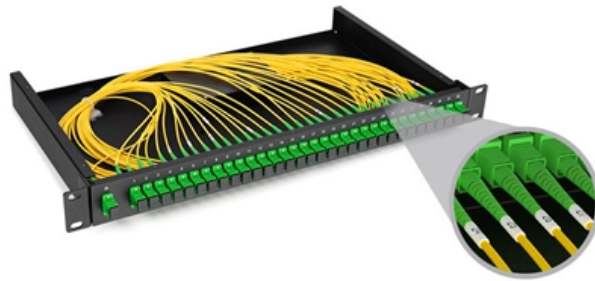


What does the emergency circuit in the distribution box manage





Overview

Emergency power distribution systems ensure uninterrupted power supply during critical situations such as blackouts or emergencies. The requirements for the installation, operation, and maintenance of these systems are found in Art.



What does the emergency circuit in the distribution box manage



The Ultimate Guide to Distribution Box Types

In any electrical system, the distribution box is the heart and brain, a critical component that safely manages and distributes power from the main source to

Emergency Systems and the NEC , EC& M

To ensure that a fault on the normal wiring circuits won't affect the performance of emergency wiring or equipment, keep all wiring to emergency



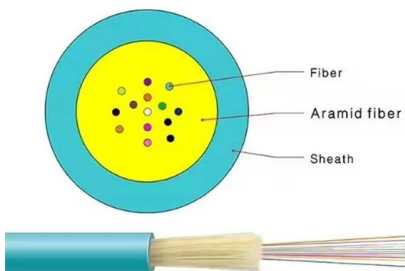
Power Distribution Boxes Explained Simply

Where Power Distribution Boxes Are Used Power distribution boxes are essential in many settings, from homes to hospitals. Here's a look at some



Understanding Distribution Boxes: A Comprehensive Guide

A distribution box, also known as a power distribution box or electrical distribution box, is used to distribute electrical power safely to multiple



What is the Function of a Distribution Box in Electrical Systems

A distribution box helps send electricity safely to different circuits at home. The circuit breakers inside stop overloads and short circuits, keeping devices safe.

The Complete Guide to Distribution Box: Installation, Types & More

The primary purpose of a distribution box is to provide a safe and organized way to control electrical circuits. When an electrical fault occurs, such as an overload or short circuit, the protective

DETAILS DISPLAY

Focus On Every Detail



01

Neat & Clean Layout

Cleaner arrangement of components. Easy to operate



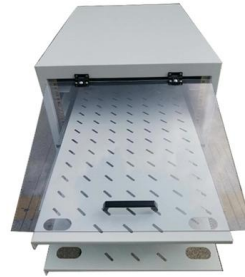
What Does a DB Box Do? , CNC Electric

In electrical installations, the term "DB box" (Distribution Board) appears frequently--yet its critical role is often misunderstood. Whether you're managing a factory's power network or troubleshooting home



Your questions answered: Design considerations for

Gary Gluck: Ground Fault protection is undesirable in an emergency generator distribution switchboard, because emergency loads need to stay

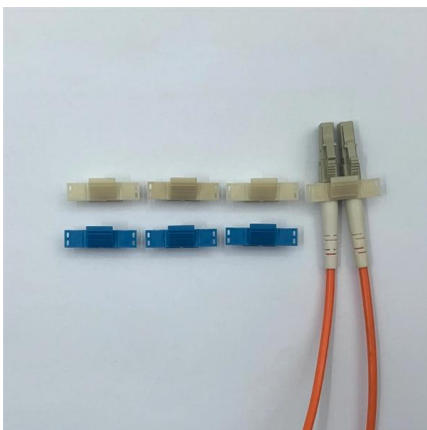
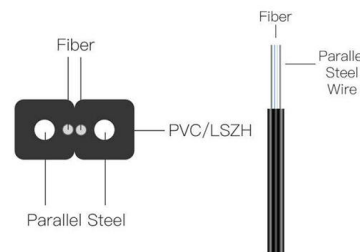


what is a Distribution Box

In electrical systems, a distribution box, also known as a breaker box or distribution board, plays a critical role in managing and distributing electrical

Understanding Distribution Boxes: Your Guide to Power

In the safe and effective supervision of electrical systems, distribution boxes may be the last quite unnoticed yet they are extremely fundamental part.



Emergency Power Distribution Equipment

Because emergency power circuits must always be available to serve life-safety equipment, NEC Article 700.5 (B) specifies that "Means shall be permitted to bypass and isolate the transfer equipment."



Distribution Box Installation: A Complete Guide to Safe

The distribution box, often referred to as a breaker box, fuse box, or electrical panel, is a critical component of any electrical system. It acts as the central hub for

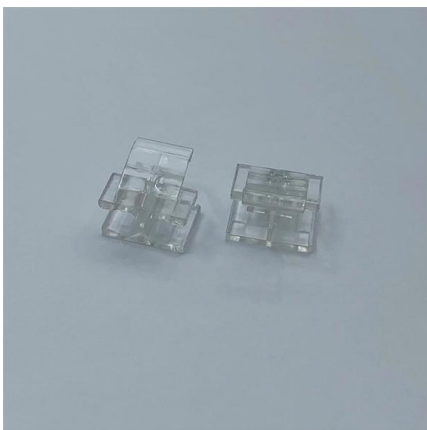
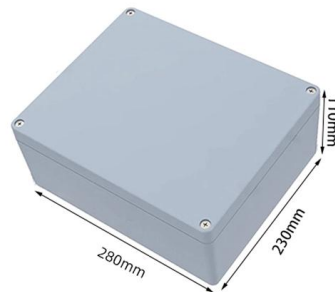


Understanding Distribution Boxes: Your Guide to Power

A: A junction box is primarily used to connect electrical wires, while a distribution box is designed to distribute power to various circuits. The distribution

Distribution Box Guide: Types, Components & Solutions

It ensures that circuits are safe, organized, and easy to manage. A properly installed electrical distribution box is important for safety. It also allows



Understanding Distribution Boxes: A Comprehensive Guide

Distribution Boxes: The most common type, used to deliver electrical power from the main supply to individual circuits in homes, offices, or factories.



Comprehensive Understanding of Distribution Box

A distribution box helps manage electricity in homes or workplaces. It makes sure power flows safely and efficiently to devices. Let's look at its main jobs. Power distribution and circuit management The



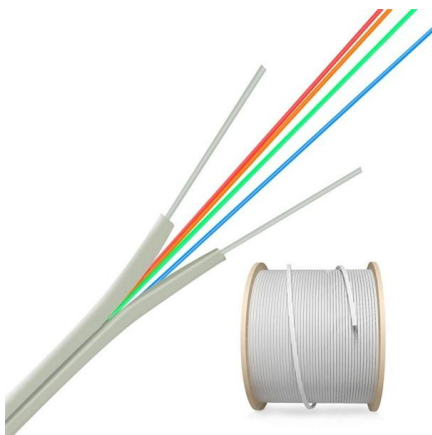
What is the function of a distribution box?

The main switch in the Distribution Box allows you to cut off power to the entire property at once. This is essential for maintenance, emergencies, or when you are away for an extended



What Is a Fused Distribution Box and How Does It Work

A fused distribution box safely distributes power to circuits and uses fuses to protect wiring and devices from overloads or faults in electrical systems.



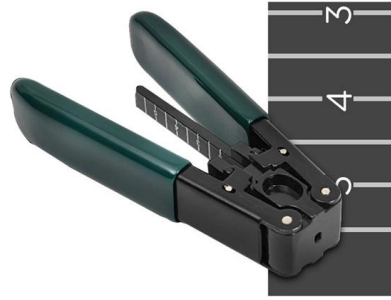
Distribution Boards

Distribution boards, often referred to as electrical panels or breaker boxes, serve as the nerve center of any electrical system. Here we explore the crucial parts of a distribution board and gain insights into



Distribution Box: Types and Functions , Axis-Electricals

A distribution box ensures that electrical supply is distributed in the building, also known as a distribution board, panel board, breaker panel, or electric panel. It is

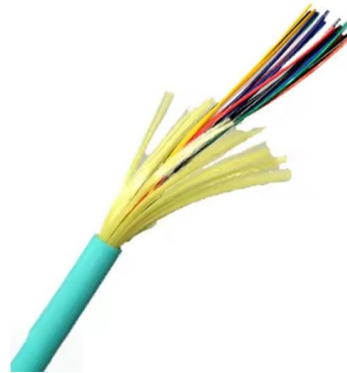


Emergency Switchboard

The emergency switchboard is the emergency power distribution center. The emergency switchboard will provide 450 and 120 V power to auxiliaries which are vital under emergency conditions, essential

What is the Function of a Distribution Box in Electrical Systems

The distribution box plays a crucial function in the distribution box of electrical systems. It helps electricity move safely to different circuits, ensuring that power is utilized efficiently. This box protects



What is an Electrical Distribution Box? A

When it comes to electrical safety, every building -- whether it's a cozy home or a sprawling factory -- needs a secure system to manage and



Emergency System Wiring.

When normal power is not present because of an outage, the emergency source intervenes to provide backup power. The emergency source is permitted to



Emergency Power Systems: Distribution Board

The distribution board serves as the heart of your emergency power system, and its proper implementation can mean the difference between a minor

Emergency Power Distribution Systems

Emergency power distribution systems ensure uninterrupted power supply during critical situations such as blackouts or emergencies. These systems are designed to provide backup power



A Definitive Guide To Distribution Boxes

Power distribution boxes are beneficial because they eliminate the requirement for each output device to be connected directly to the power source. As a result, there's no reason to utilize



What Is an Electrical Distribution Box and Why Is It

An electrical distribution box distributes power safely, prevents overloads, and protects circuits, ensuring efficient and reliable electrical systems.



Contact Us

For datasheets, pricing, or custom high-speed optical interconnect solutions, please visit:
<https://www.syropy.com.pl>