

What does relay protection installation mean



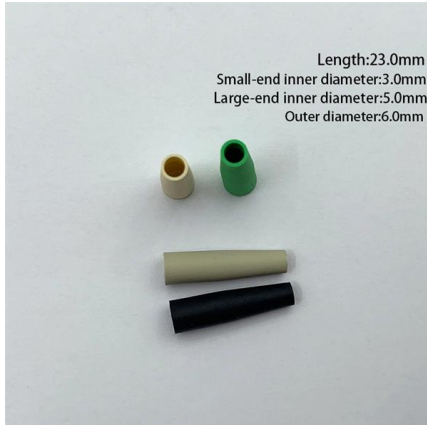


Overview

Relay protection consists of high-tech devices that ensure safe and uninterrupted operation of power facilities. In industry, virtually all main types are applied: from maximum current to microprocessor-based, depending on the substation class and reliability requirements. Long term cost reduction (TCO) for trainings and maintenance by reduce variety of relays A fast and selective arc fault mitigation for air-insulated LV & MV switchgear and Relion protection and control relays and sensor. It functions as a watchdog by constantly surveying multiple system components including voltage, current, frequency, and phase angle. RPA automatically detect faults and emergency situations, then take action to disconnect the damaged section of the network to protect equipment and ensure stable and reliable power supply. Protection is the branch of electric power engineering concerned with the principles of design and operation of equipment (called 'relays' or 'protective relays') that detects abnormal power system conditions, and initiates corrective action as quickly as possible in order to return the power.



What does relay protection installation mean



What Is A Protective Relay And Why It Matters

Protective relays are found wherever electrical power must be controlled safely and reliably. They are common in generation facilities, substations, industrial plants,

Relay Protection in HV/MV Substations: Calculations,

Introduction Relay protection is essential to ensure the stability, reliability, and safety of electrical power systems. In HV (High Voltage) and MV



Fundamentals of Relay Protection Design

Relay protection is a crucial aspect of electrical power network transmission and distribution systems, ensuring the safety and reliability of the overall network. Designing an effective

Understanding Protection Relays: Importance and

Therefore, adequate protection against such situations is important for every industrial system. What is meant by protection in the electrical system?



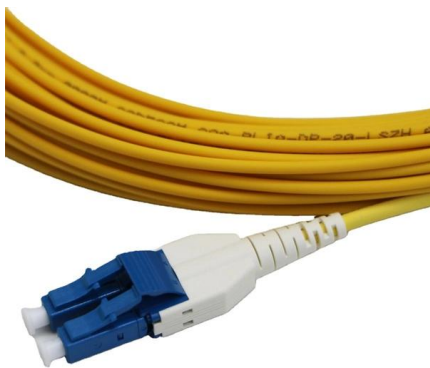
Understanding Protective Relays in Power Systems

Protective relays are critical components in power systems, providing essential protection for various elements such as generator sets, outgoing feeder



What is Protection Relay?

A protection relay is a crucial component of electrical systems that safeguard infrastructure, employees, and equipment from electric problems and malfunctions. It functions as a



Types of Protection Relays and Testing procedures

Regular testing and maintenance of protection relays are essential to verify their proper operation, detect faults, and mitigate risks. By conducting



What is a Protective Relay? Principle, Advantages,

A protective relay is an electrical component that is designed to trip a circuit breaker when a fault is encountered or identified.

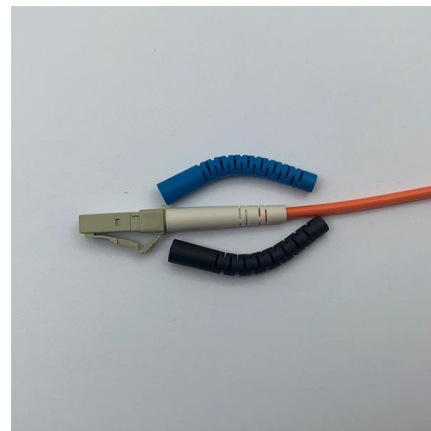


What are Protective Relays?

Protective relay work as a sensing device, it senses the fault, then known its position and finally, it gives the tripping command to the circuit breaker. The circuit

What Is a Protection Relay and What Does It Used for

A protective relay can be installed in the electrical system to keep track of the abnormal conditions in the circuits. It can measure the electrical



What is Relay Protection and Why Is It Needed?

Relay protection consists of high-tech devices that ensure safe and uninterrupted operation of power facilities. In industry, virtually all main types are applied: from maximum current to



Voltage Protection Relay: Working Principle and Functions

A voltage protection relay is an essential device to keep electrical systems running efficiently and safely. These devices are designed to suit many unique situations.



Protective Relay: Working, Types, and Applications

Learn about protective relays, their working principle, types, and applications in power systems. Discover how relays protect transformers,

Protection Relay: Types, wiring diagram and working principle.

Protection relay is an electromechanical monitoring safety device which senses fault and provide trip signal to the breaker as per set value in LT and HT panel.



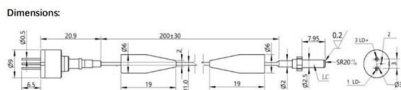
High Voltage Electrician: Installing Protective Relays

Essential guide for high voltage electricians installing protective relays in electric power transmission, control, and distribution.



How to use Lockout Relay (master trip relay) in

Practical applications of lockout relays on mainstream switchgear and protection and adaptations in modern digital power substations.



Protection Relay Testing and Commissioning

Since type testing of a digital or numerical protection relay includes software and hardware testing, the type testing procedure is very complex and more challenging than a static or electromechanical relay.

What Is A Protective Relay And Why It Matters

Where Protective Relays Are Used Protective relays are found wherever electrical power must be controlled safely and reliably. They are common in generation



Power System Protective Relays: Principles & Practices

Protective relays and devices have been developed over 100 years ago to provide "lastline"of defense for the electrical systems. They are intended to quickly identify a fault and isolate it so the balance of



Basic protection relay knowledge

Protection is needed to detect electrical faults and abnormal operating conditions. Protection is also needed for protecting people and property around the power network. The protected zone is the part



The basics of power system protection that every

Protection is the branch of electric power engineering concerned with the principles of design and operation of equipment (called 'relays' or 'protective



Introduction to Protective Relaying , Electric Power

What are Protective Relays, or Protection Relays?
Protective relays are used in industrial power generation and supply systems to open and isolate branch



Basic protection relay knowledge

Coordination and grading Protection is needed to detect electrical faults and abnormal operating conditions. Protection is also needed for protecting people and property around the power network.



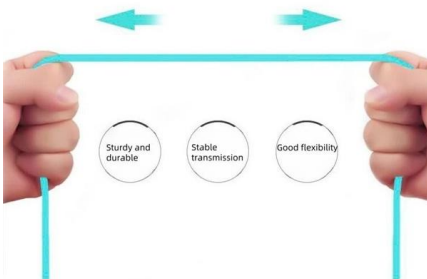
Understanding Protection Relays in Electrical Power Systems

Protection relays continue to develop in tandem with technology, providing ever more advanced and effective means of safeguarding our electrical infrastructure.



More durable and robust

The outer layer is made of environmentally friendly PVC, which is soft and elastic. It can be stretched without damage, so you can use it with confidence.



What's a protective relay and what does it protect?

This FAQ contrasts and compares traditional electrotechnical and solid state protective relays, looks at how layers of protective relays are used to

Protection Relay Types and Testing Procedures

Discover the types of protection relays, their applications, and essential testing procedures to ensure grid reliability and safety. Learn about



Contact Us

For datasheets, pricing, or custom high-speed optical interconnect solutions, please visit:
<https://www.syropy.com.pl>