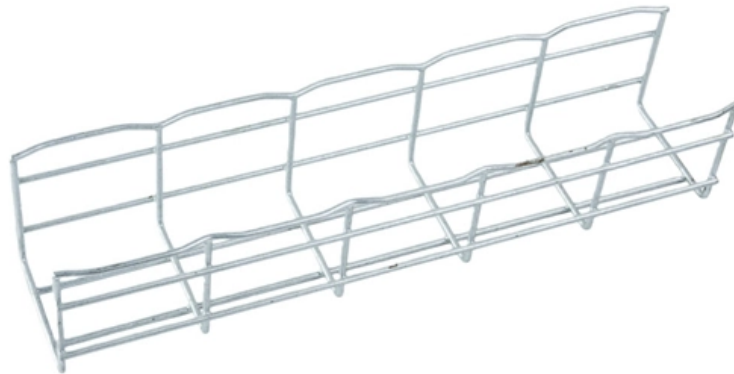


What does es mean in relay protection transmission lines



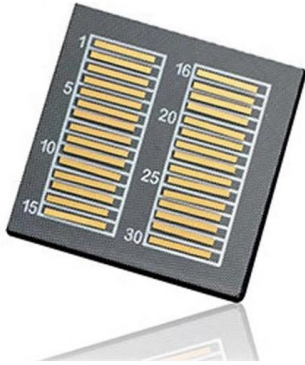


Overview

Pilot-wire relaying is an adaptation of the principle of differential relaying to line protection and functions to provide high-speed clearing of the line for faults anywhere on the line.



What does es mean in relay protection transmission lines



IEEE Guide for Protective Relay Applications to Transmission Lines

The impact of different electrical parameters and system performance considerations on the selection of relays and protection schemes is discussed. The purpose of this guide is to provide a

The essentials of power systems: Relay protection and

The main protection functions for distribution and transmission lines are briefly explained below: 1.1 Overcurrent protection The relay starts to operate



The art of fault clearance in transmission systems: The

The main relay protection is typically installed for each equipment unit, including transmission lines, busbars, transformers, and so forth. Figure 6

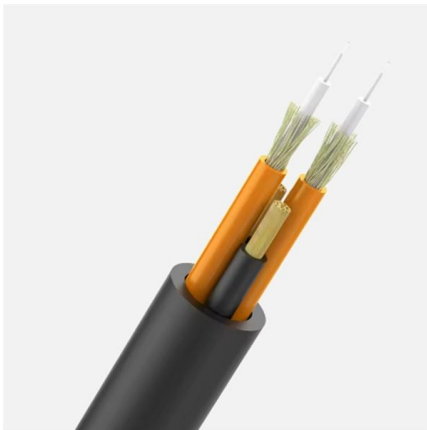
Basic protection relay knowledge

Definite time delay means that the protection operate time dose not change or depend on the fault type or the fault current magnitude. Inverse time delay, on the other hand, depends on the current



Standards for Line Protection , Delgado Relay Protection Reference

In conclusion, adhering to line protection standards, such as those established by IEEE and IEC, is crucial for ensuring the proper design, installation, and operation of protective relays in



Introduction to Line Protection , Delgado Relay Protection Reference

Introduction to Line Protection Line protection is a critical component of electrical power network transmission and distribution systems. Its purpose is to implement devices and schemes



Introduction to Relay and Different Types in Distribution

Equipment Protection: Relays safeguard expensive equipment such as transformers, generators, and transmission lines by disconnecting them from





IEEE Guide for Protective Relay Applications to Transmission Lines

Applications of the concepts to accepted transmission line-protection schemes are also presented. Many important issues, such as coordination of settings, operating times, characteristics



Protective Relay: Working, Types, and Applications

Learn about protective relays, their working principle, types, and applications in power systems. Discover how relays protect transformers,



Types of Electrical Protection Relays or Protective Relays

Protective Relay Definition: A protective relay is an automatic device that senses abnormal conditions in electrical circuits and



TRANSMISSION LINE PROTECTIVE SYSTEMS LOADABILITY

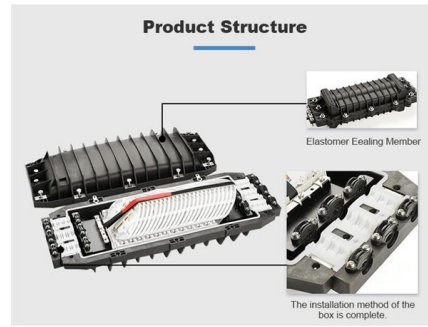
Abstract This paper is about the effects of protective relaying on the loadability of transmission lines. The calculation of relaying load limits for use in comparing to transmission line load limits or other limits is





Microsoft Word

The protection principle described in Lessons 1.1 and 1.2, non-pilot protection using Over-Current and Distance Relays, contain a fundamental difficulty. Although clearing the faults at both ends



Transmission Line Protection Principles

Transmission protection systems are designed to identify the location of faults and isolate only the faulted section . The key challenge to the transmission line protection lies in reliably detecting and

Protection of Transmission Lines

Time graded overcurrent protection of transmission lines, protection of ring main system, translay scheme for protection of 3-phase line, distance protection of transmission lines.



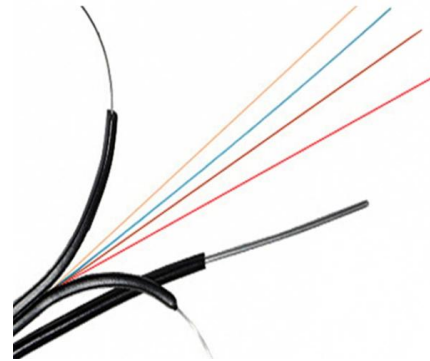
Crackhead/pass.txt at master · moimikey/Crackhead ·

How to create a web form cracker in under 15 minutes. - moimikey/Crackhead



Transmission Line Protection Theory

Before considering using a GE Multilin relay for a specific transmission line protection application, it is important to understand how the relay meets some more general application requirements for



Transmission Line Protection Theory

The loadability limits and requirements on transmission lines can introduce additional constraints for protective relaying, as protection must be able to allow the transmission line to be temporarily

Line Protection Schemes

Line protection schemes are an essential component of any electrical power transmission and distribution system. These schemes play a crucial role in mitigating the impact of



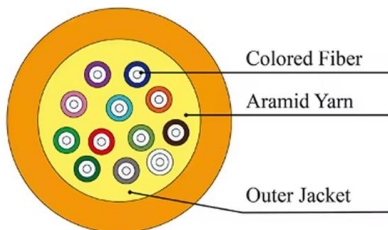
Types of Line Protection Relays , Delgado Relay Protection Reference

Types of Line Protection Relays Line protection relays play a crucial role in safeguarding electrical power transmission and distribution systems. They act as the first line of defense by



What are the Primary Protection Systems used in Power

Transmission protection at present includes primary distance, differential relays, backup overcurrent & communication-assisted methods.



Types of Line Protection Relays , Delgado Relay Protection Reference

Distance relays are widely used for line protection in high-voltage transmission systems. These relays use the concept of impedance measurement to determine the distance to a fault.

EHV Transmission Line Protection White Paper

This white paper is intended for use when specifying new systems used on new EHV transmission lines or replacement of existing protection systems. It is not meant to force the



Relay Protection Basics: Types of Transmission Line

Time-Delayed Overcurrent Protection: Operates with a short time delay, protecting the full length of the line and coordinating with the instantaneous protection of the



Protective relay

However, due to their very long life span, tens of thousands of these "silent sentinels" are still protecting transmission lines and electrical apparatus all over the



Transmission Line Protection: Schemes & Relay Zones

Transmission line protection is the coordinated use of relays, instrument transformers, circuit breakers, communication channels, and backup logic to detect faults on high-voltage lines and

Pilot Protection of Transmission Lines

Pilot protection is an adaptation of the principles of differential relaying that avoids the use of control cable between terminals. The term 'pilot' refers to a communication channel between two or more



Distance (21) Protection , Electric Power Measurement

Distance relaying is used to detect faults on long-distance lines, pinpointing not only the fault condition but also measuring the distance between the current sensing



Different types of Protection on Transmission line

Transmission line to be protected should trip in the shortest possible time (instantaneously) this blog post, we learn about different types of protection on



Power System Protective Relays: Principles & Practices

As the protected components of the electrical systems have changed in size, configuration and their critical roles in the power system supply, some protection aspects need to be revisited (i.e. the use of

Anforderungen an Netzschutz

According to the current ENTSO-E organizational set-up, the responsibility for protection equipment in context with the devices and the field components is assigned to the ENTSO-E / SOC / StO /



Contact Us

For datasheets, pricing, or custom high-speed optical interconnect solutions, please visit:
<https://www.syropy.com.pl>