

What does C mean in CF optical module





Overview

Coherent modules such as CFP2-DCO, QSFP-DD DCO, and OSFP-DCO typically include coherent optical receivers and digital signal processors (DSPs), possessing the flexibility to adapt to different optical network environments. What does the "C" mean in "CSR" MMF optics?

Hey all, I have a curiosity I'd like to put to rest. I recently bought some generic optics to split a 40Gb QSFP into 4x10Gb interfaces. Describes what an optical module is and FAQs, including the fundamentals, appearance and structure, key performance counters, common types, and naming conventions of optical modules, causes of optical module failures and corresponding protection measures, types of optical modules supported by. This document focuses on projection optical modules that incorporate Texas Instruments' DLP Display chips and are designed to project an image onto a surface for a variety of applications, including smartphones, tablets, display projectors, smart home displays, digital signage, AR glasses, and. EXFO develops smarter test, monitoring and analytics solutions for fixed and mobile network operators, webscale companies and equipment manufacturers in the global communications industry.



What does C mean in CF optical module



A Review of the Research Progress on Optical Fiber

This paper presents a comprehensive review of recent advances in C-type optical fiber sensors, with a particular focus on structural optimization, the

Lens Help C, CB, CF, CFi, CFE, etc.

The C lens was the original, C probably standing for Compur, the manufacturer of the shutter. The CF line was a mechanical redesign, addressing some issues with the original design,



CFP2-DCO vs QSFP-DD DCO vs OSFP-DCO:What's

Explore the secrets of coherent optical modules--compare CFP2-DCO, QSFP-DD DCO, and OSFP-DCO. Learn about their definitions,

TI DLP® System Design: Optical Module Specifications

This document focuses on projection optical modules that incorporate Texas Instruments' DLP Display chips and are designed to project an image onto a surface for a variety of applications, including

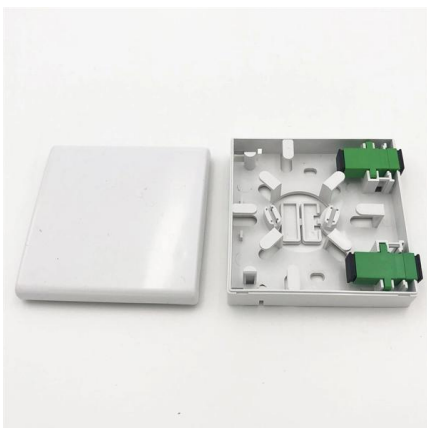
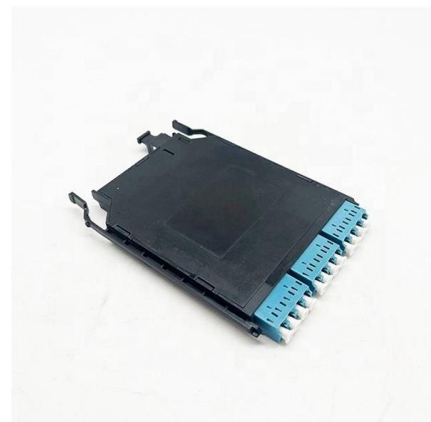


Design and simulation of a C-shaped optical fiber sensor for

Optical fiber sensors have attracted significant interest in the sensing field. Conventional optical fiber sensors exhibit drawbacks such as fragility and restricted sensitivity, that demand

How to choose GPON OLT C+ Module GPON GBIC?

In conclusion, choosing the right GPON OLT C+ Module requires a careful evaluation of various factors, including transmission distance, split ratio, optical power budget, compatibility,



What do you know about the three emerging bands of

A major magic weapon for expanding the transmission capacity of optical networks is to continuously explore the available band resources of optical



What Is an Optical Module and Its FAQs (V200)

What Is an Optical Module and Its FAQs (V200) Describes what an optical module is and FAQs, including the fundamentals, appearance and structure, key performance counters, common types,



Original SFP Huawei GPON-OLT-CLASS-C+/C

High quality Original SFP Huawei GPON-OLT-CLASS-C+/C++ Optical Module from China, China's leading product market Huawei Optical Transceiver product, with



What does the "C" mean in "CSR" MMF optics? : r/networking

It's pretty neat, and pretty straight forward. Then I started to fixate on the part number having a "C" as in "CSR4" and I did some googling to calm my inquiring mind. I know what ordinary SR4 means, but



119444 die 110023 und 108646 der 61406 in 39759 von 37276 zu 36337 das 31769 den 30981 fÃ¼r 29484 ist 26923 mit 24596 im 24129 auf 24121 des 23440 nicht 23371 eine 22483 auch 21975 sich



The Firmware Design and Implementation Scheme for C

In this paper, an efficient firmware design scheme is proposed for a 100 Gbps C form-factor pluggable (CFP) optical transceiver based on the multi



What are Basic, Extended and Super C-Band?

Optical fiber shows the lowest loss in the C-band and occupies a large advantage in long-distance transmission systems. It is usually used in many

The differences between optical fiber grades A, B, C, and D

In summary, optical fiber grades A, B, C, and D differ significantly in terms of their end-face quality standards, which directly impact insertion loss and return loss metrics. Grade A fibers are best suited



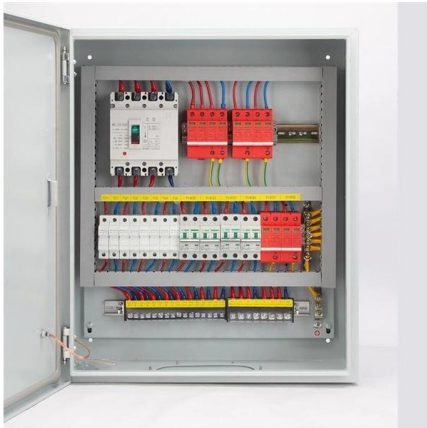
Design and simulation of a C-shaped optical fiber sensor for

Abstract Optical fiber sensors have attracted significant interest in the sensing field. Conventional optical fiber sensors exhibit drawbacks such as fragility and restricted sensitivity, that demand modification.



The Firmware Design and Implementation Scheme for C

The demand for integrated telecommunication network infrastructure has increased, and 100 Gbps optical transceivers are a critical part of this



Understanding Eye Pattern Measurements Application Note

A key enabling component in the physical layer is the transceiver module, which enables vital transmit and receive operations at the end of each fiber optic link. Transceiver modules, such as the

Huawei GPON SFP Optical Modules

This document summarizes the specifications of three Huawei GPON optical modules. The modules operate at transmission wavelengths of 1490 nm and reception wavelengths of 1310 nm. They have



Optical Fiber Wavelength Bands: O, E, S, C, L, U-Band

Explore the different wavelength bands used in optical fiber communication, including O, E, S, C, L, and U-bands, with approximate wavelength ranges.



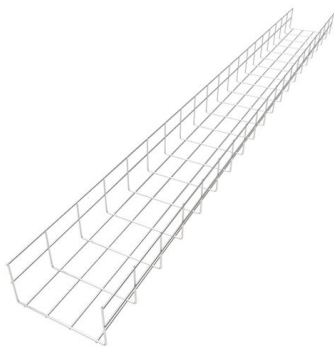
The Most Comprehensive Guide Of Optical Modules

Explore the ultimate guide to optical modules. Learn types, functions, performance metrics & how to choose the right module for your fiber network.



20180146_100G 400G Testing Guide_Inside_6x9_V7_EN

The CFP information page provides detailed information about the module ID, vendor name and supported rates through the CFP control page; it is no longer necessary to remove the CFP in order



C-FEC:Concatenated FEC for Optical Transport -

Among various FEC approaches, Concatenated FEC (C-FEC) represents a sophisticated architecture that combines multiple coding schemes to



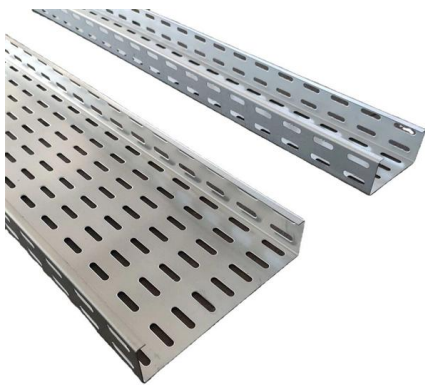
Understanding Optical Modules

If an optical module is installed in a running device, you can run the display interface transceiver command to view parameters of the optical module, including the center wavelength, transmission



What does the C mean in F3 Minecraft?

What does C level mean in Minecraft? Looking at the "C" value, it represents the amount of air in the space in your view. It's a tactic commonly used in mining, as when you are underground, or looking



What Is an Optical Module

On an optical network, a sender needs to convert electrical signals into optical signals before sending them to a receiver, and the receiver needs to convert received optical signals into electrical signals.

The differences between optical fiber grades A, B, C, and D

Grade A fibers are best suited for high-performance applications requiring minimal signal degradation, while Grades B and C may be adequate for less critical environments.



Explanation of Optical Module Parameters

Considering that some newcomers to optical modules may not understand the letters on the optical module or the specific meanings of the parameters on the optical module, the following is



What does the "C" mean in "CSR" MMF optics? : r/networking

This module can be used for native 40G optical links over 12-fiber parallel cables with MPO/MTP female connectors or in a 4x10G breakout mode with parallel to duplex fiber breakout cables for connectivity



Contact Us

For datasheets, pricing, or custom high-speed optical interconnect solutions, please visit:
<https://www.syropy.com.pl>