

What do the different circuits in a distribution box represent





What do the different circuits in a distribution box represent



What Is a Distribution Box in Electrical Systems?

A single-phase box is used for residential installations, while a three-phase box is designed for commercial or industrial use, allowing for greater power distribution.

what is a Distribution Box

In electrical systems, a distribution box, also known as a breaker box or distribution board, plays a critical role in managing and distributing electrical



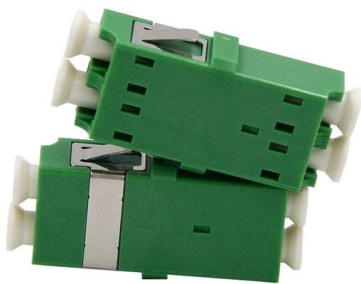
Distribution Board vs. Distribution Box: What's the

What is a Distribution Box? A distribution box is a compact electrical enclosure designed to help safely manage local power distribution. It doesn't



Distribution Boxes Explained: Types, Functions, and

A distribution boxes is an essential device that safely and efficiently distributes electrical power to different areas within a building or facility. It is

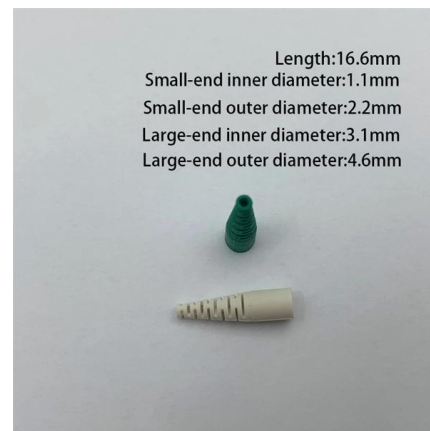


12 types of distribution boxes and how to choose them

Distribution boxes, often called breaker boxes or fuse boxes, are basically the central hub where electricity from your main supply gets divided into different circuits.

Distribution Box and Selection Guide

Factors to Consider When Choosing a Distribution box Type of Property The nature of your property plays a crucial role in determining the



What is a Distribution Box? - A Comprehensive Guide

Whether in homes, offices, or industries, its importance cannot be overstated. Understanding the Basics of a Distribution Box A electrical distribution



Explore Power Distribution Box Types and Functions

To put it bluntly, the distribution box is the control and distribution center of electricity. Distribution boxes vary in shape and structure due to different



Power Distribution Boxes Explained Simply

What Is a Power Distribution Box? A power distribution box is a key part of any electrical system--it's the place where electricity from a main source

Single Phase Distribution Box Definition and Main Parts

A single phase distribution box controls and protects home or office circuits. Learn its definition, main parts, and how it ensures electrical safety.



What Is an Electrical Distribution Box? A Complete Guide

The electrical distribution box serves a critical role in the safe distribution of power by centralizing circuit control and preventing overloads and



Understanding Distribution Boxes: Your Guide to Power Distribution

Distribution boxes, or electrical junction boxes as they are sometimes called, play a vital role in electrical systems. They act as the central location where electrical energy is given out and



The Complete Guide to Distribution Box: Installation, Types & More

What's the difference between a distribution box and a sub-panel? A distribution box typically refers to the main electrical panel that receives power from the utility service. A sub-panel is



Distribution Boxes Explained: Types, Functions, and

Learn about distribution boxes, their types, functions, and safety features to ensure efficient and secure electrical power distribution in any building.



What is an Electrical Distribution Box? A

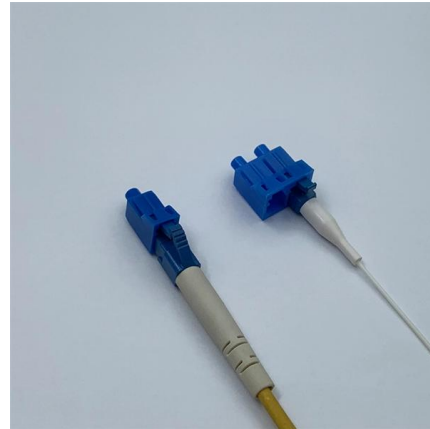
At its core, an electrical distribution box (or distribution board) is a metal or plastic enclosure that houses various components responsible for





Power Distribution Boxes Explained Simply

Electricity enters the box from the main power line. Inside the box, the power is split into multiple circuits --each one leading to a different area, like your

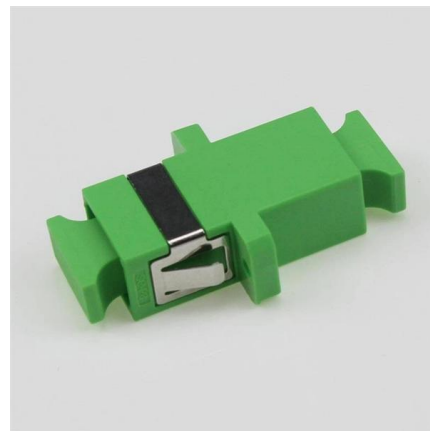


Distribution Board vs. Distribution Box: What's the Real

Confused about the difference between a distribution board and a distribution box? Learn the key functions, components, and applications of each to ensure safety

How to Read and Interpret Your Distribution Box Labels

Understand your distribution box labels to identify circuits, improve safety, and troubleshoot electrical issues in your home with confidence.



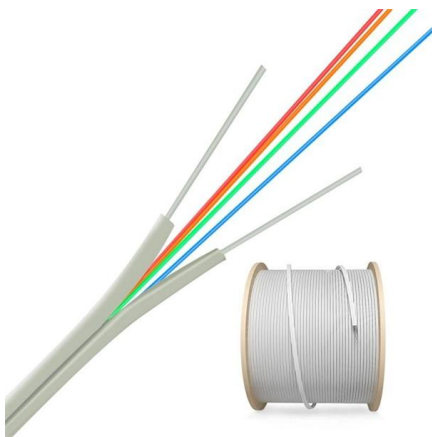
What Is Distribution Box (DB Box): Types, Functions,

What Is a DB Box (Distribution Box) and the Component? As part of the electrical system, the distribution box (DB box) receives power and distributes



Understanding Distribution Boxes: A Comprehensive Guide

A distribution box is used to receive electrical power from a main supply and distribute it to multiple branch circuits in a safe and controlled way. It helps protect circuits, organize electrical



How To Read The Distribution Box System Diagram

?Trace the outgoing line circuit?: Analyze the outgoing line circuits of the distribution box one by one, understand the load equipment and protection

Explore Power Distribution Box Types and Functions

You can see how many circuits are on the periphery of the box to divide the circuit. 8 circuits and below will basically be used for home use, and



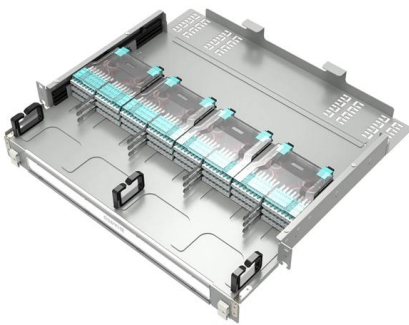
Distribution Boxes: Types and Functions

A distribution boxes acts as the load center and main distributor of electrical power within a building. Also called a distribution board, panel board,



A Definitive Guide To Distribution Boxes

Power distribution boxes are beneficial because they eliminate the requirement for each output device to be connected directly to the power source. As a result, there's no reason to utilize



Distribution Boards

Distribution boards, often referred to as electrical panels or breaker boxes, serve as the nerve center of any electrical system. Here we explore the crucial parts of a distribution board and gain insights into

Complete Guide For Distribution Boxes Types

These boxes house various circuit breakers, protective devices, and sometimes meters, which collectively manage and distribute electricity to different circuits



How Does a Power Distribution Box Work

Learn how a power distribution box works step by step--from incoming power to circuit protection and smart monitoring--for safe, efficient electricity delivery.



Understanding Distribution Boxes:A Comprehensive Guide

A distribution boxes is an essential device that manages the safe and efficient flow of electrical power throughout different areas of a building or facility.



The Essential Guide to Understanding Electrical

1. Familiarize yourself with the symbols: Electrical distribution system diagrams use standardized symbols to represent different components and devices. These



Contact Us

For datasheets, pricing, or custom high-speed optical interconnect solutions, please visit:
<https://www.syropy.com.pl>